



GRAPH

Ceramica
VOGUE

TILES FOR ARCHITECTURE

GRAPH

Il termine Graph indica una carta millimetrata che reca stampato un reticolo di linee distanziate l'una dall'altra usata per disegni di precisione. La collezione di piastrelle rettificate in grès smaltato Vogue Graph sintetizza nel suo nome l'obiettivo di poter diventare per il progettista e l'utente finale uno strumento di disegno su superfici verticali e orizzontali. I tre formati disponibili e le 29 varianti colore delle serie Neutral e Color abbinabili a stucchi colorati declinano Graph in innumerevoli combinazioni a seconda degli ambienti in cui viene utilizzato: le sue caratteristiche di superficie antiscivolo R10, ma di facile pulizia, lo rendono inoltre adatto sia agli ambienti residenziali che extra residenziali quali uffici, ristoranti, scuole, ospedali e impianti sportivi. Attraverso i micro pattern e i contrasti di colore Graph é in grado di caratterizzare lo spazio e allo stesso tempo il suo segno discreto ne permette facilmente l'abbinamento con altri materiali e il dialogo con gli elementi d'arredo: il corretto disegno di un ambiente presuppone materiali in grado di "parlare", ma anche di "ascoltare", come da sempre nella tradizione del marchio Ceramica Vogue.

Graph or millimetre paper is printed with fine lines making up a regular grid used for precision drawings. The collection of rectified glazed stoneware tiles named Vogue Graph reflects, in its very name, the aim of being adopted by designers and end users as a drawing tool for vertical and horizontal surfaces. The three available sizes and the 29 colours of the Neutral and Color series can be matched with coloured grouts to create countless combinations suiting every environment in which Graph is to be used. Its easy-to-clean, R10 non-slip surface is suitable for residential and non-residential applications, such as offices, restaurants, schools, hospitals and sports facilities. With its micro patterns and colour contrasts, Graph makes its mark on any room. At the same time, its discreet design makes it easy to pair with other materials and furnishings. Because any interior design should encompass materials that "speak" and "listen" to one another, in true Ceramica Vogue style.

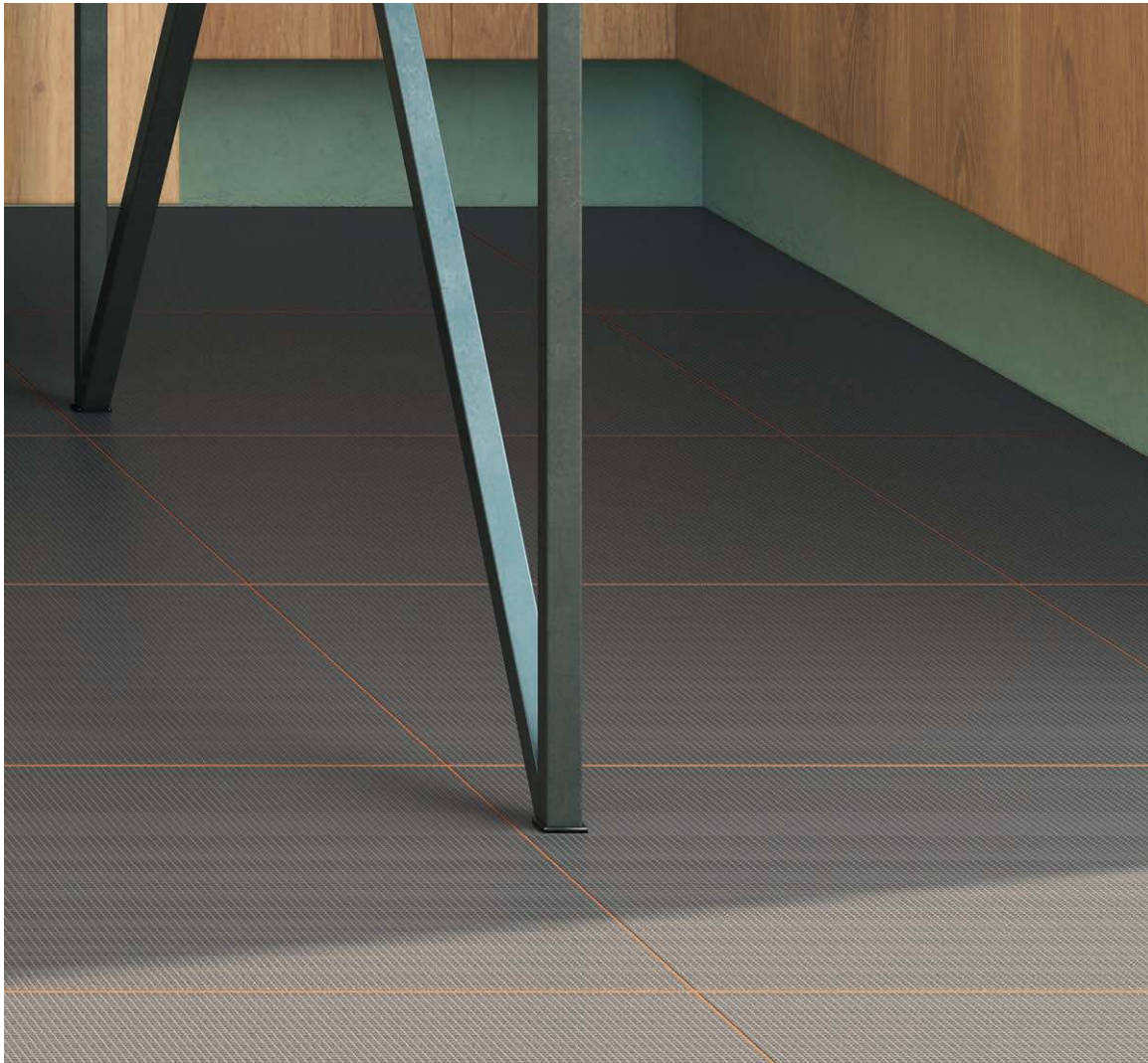




Pavimento/Floor:
GP 006 50x50x1 cm

Rivestimento/Wall:
GP 019 25x25x1 cm

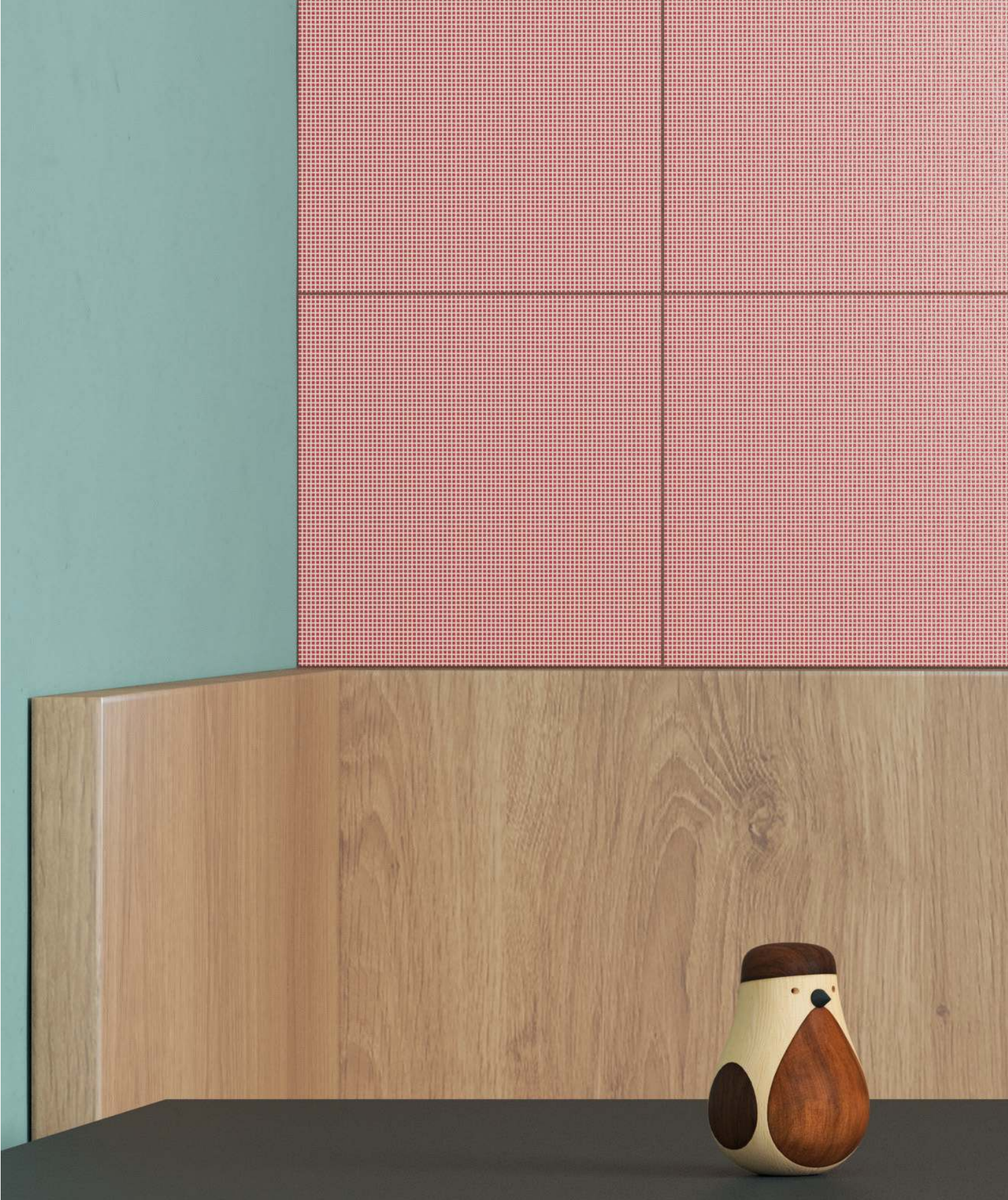
Giunto/Joint
MAPEI 145 Terra di Siena



Pavimento/Floor:
GP 006 50x50x1 cm

Rivestimento/Wall:
GP 019 25x25x1 cm

Giunto/Joint
MAPEI 145 Terra di Siena





Pavimento/Floor:
GP 016 50x50x1 cm

Rivestimento/Wall:
GP 029 25x25x1 cm

Giunto/Joint
MAPEI 145 Terra di Siena



Rivestimento/Wall:
GP 029 25x25x1 cm

Giunto/Joint
MAPEI 145 Terra di Siena





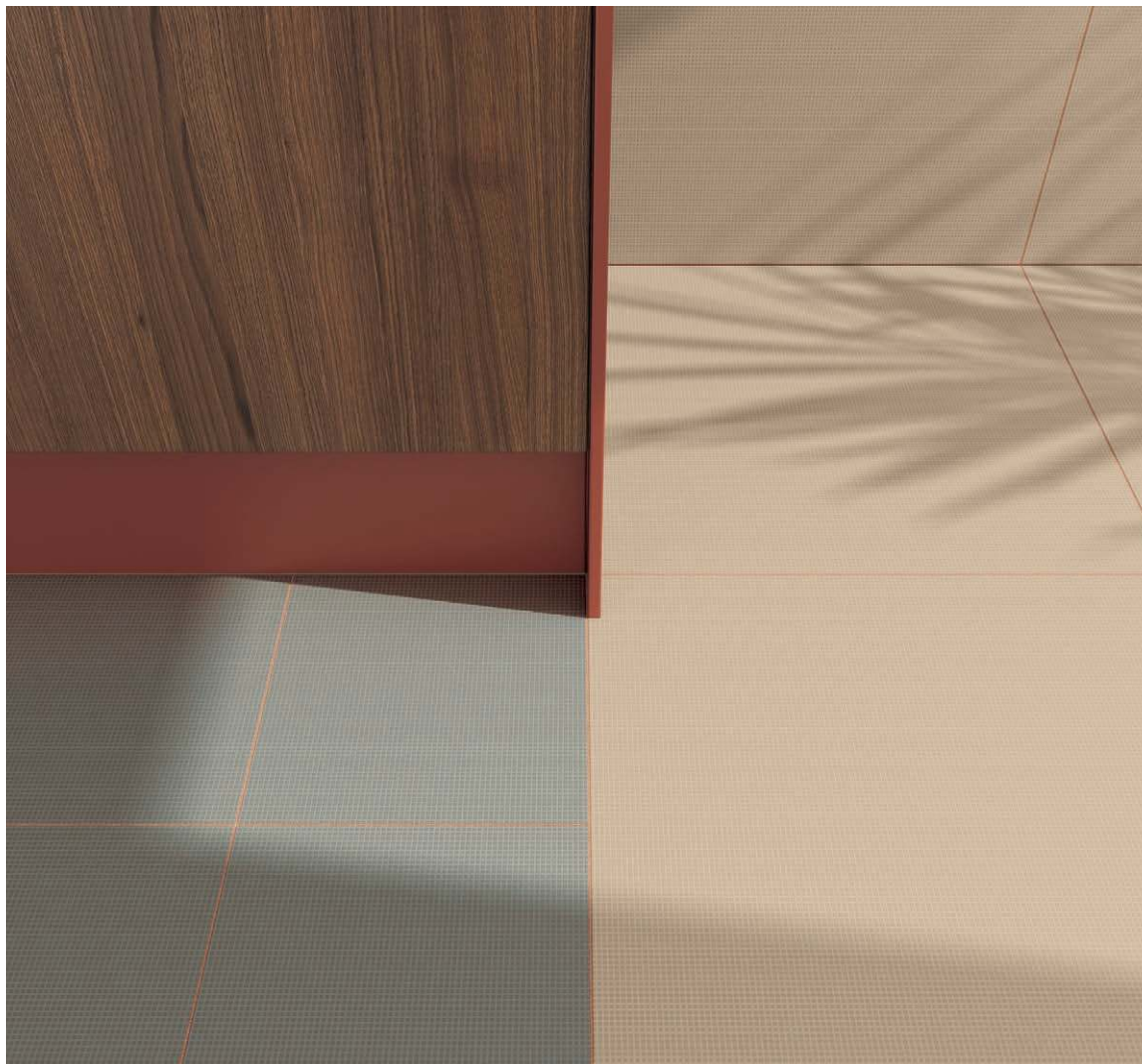


Pavimento/Floor:
GP 002 25x25x1 cm
GP 014 50x50x1 cm

Rivestimento/Wall:
GP 002 10x25x1 cm
GP 014 50x50x1 cm

Giunto/Joint
MAPEI 145 Terra di Siena





Pavimento/Floor:
GP 002 25x25x1 cm - GP 014 50x50x1 cm

Rivestimento/Wall:
GP 002 10x25x1 cm - GP 014 50x50x1 cm

Giunto/Joint
MAPEI 145 Terra di Siena





Rivestimento/Wall:
GP 003 10x25x1 cm
GP 018 50x50x1 cm

Giunto/Joint
MAPEI 149 Volcano Sand

Rivestimento/Wall:
GP 003 10x25x1 cm

Giunto/Joint
MAPEI 149 Volcano Sand







Pavimento/Floor:
GP 021 50x50x1 cm

Rivestimento/Wall:
GP 023 10x25x1 cm

Giunto/Joint
MAPEI 174 Tornado



Pavimento/Floor:
GP 021 50x50x1 cm

Rivestimento/Wall:
GP 023 10x25x1 cm

Giunto/Joint
MAPEI 174 Tornado







Rivestimento/Wall:
GP 022 10x25x1 cm
GP 024 25x25x1 cm

Giunto/Joint
MAPEI 141 Caramel

Rivestimento/Wall:
GP 022 10x25x1 cm

Giunto/Joint
MAPEI 141 Caramel





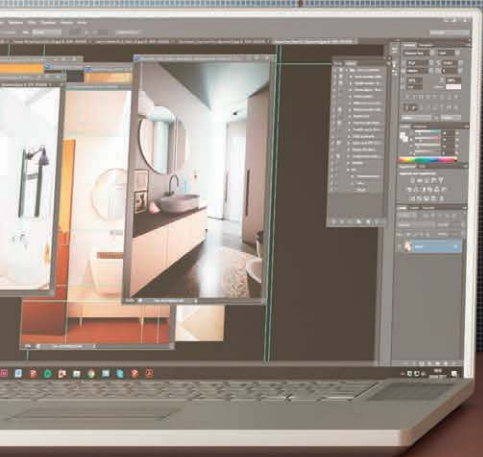
Rivestimento/Wall:
GP 029 50x50x1 cm
GP 029 25x25x1 cm
GP 029 10x25x1 cm

Giunto/Joint
MAPEI 143 Terracotta



Rivestimento/Wall:
GP 029 50x50x1 cm
GP 029 25x25x1 cm

Giunto/Joint
MAPEI 143 Terracotta





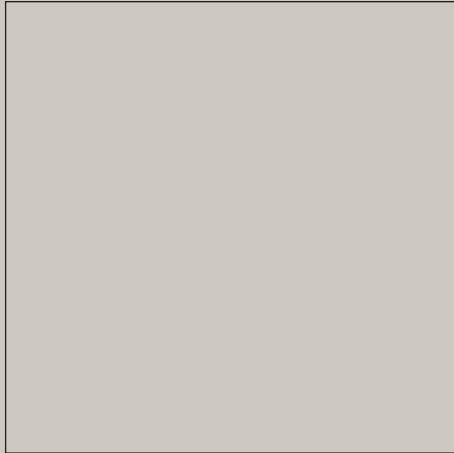
Pavimento/Floor:
GP 028 50x50x1 cm

Rivestimento/Wall:
GP 001 10x25x1 cm

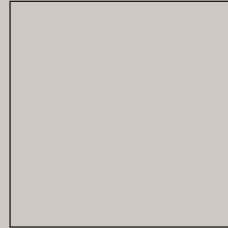
Giunto/Joint
MAPEI 150 Yellow



50x50x1 cm
20"x20"x $\frac{25}{64}$ "

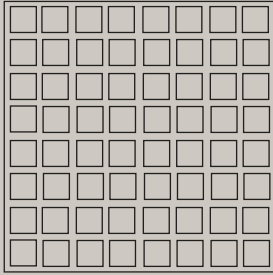


25x25x1 cm
10"x10"x $\frac{25}{64}$ "



10x25x1 cm
4"x10"x $\frac{25}{64}$ "





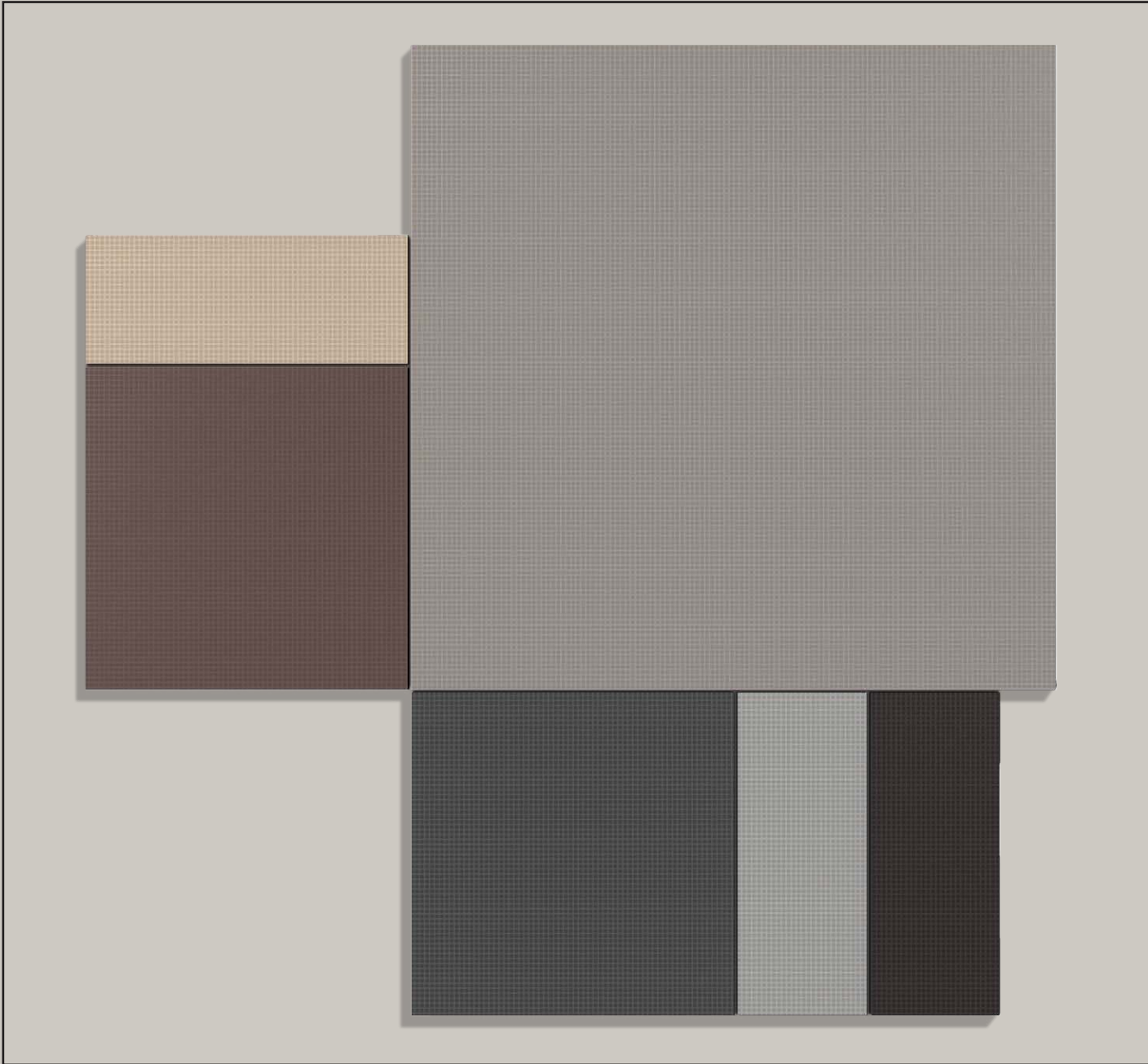
colori
GP 001 - GP 0014

GRAPH

NEUTRAL

R10 / DCOF > 0,42

coloured body



GRAPH

NEUTRAL

R10 / DCOF>0,42

COLORI - COLORS

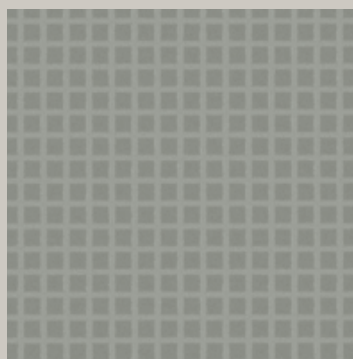


GP 001

PEI IV

50x50x1 cm - 20"x20"x $\frac{25}{64}$ "
25x25x1 cm - 10"x10"x $\frac{25}{64}$ "
10x25x1 cm - 4"x10"x $\frac{25}{64}$ "

Rettificato - Rectified



GP 002

PEI IV

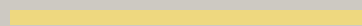
50x50x1 cm - 20"x20"x $\frac{25}{64}$ "
25x25x1 cm - 10"x10"x $\frac{25}{64}$ "
10x25x1 cm - 4"x10"x $\frac{25}{64}$ "

Rettificato - Rectified

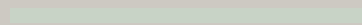
GIUNTI - JOINTS SUGGESTION



LATICRETE 90 Light Pewter



MAPEI 150 Yellow



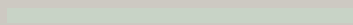
LATICRETE 50 Sea Glass



MAPEI 112 Medium Grey



MAPEI 150 Yellow



LATICRETE 50 Sea Glass

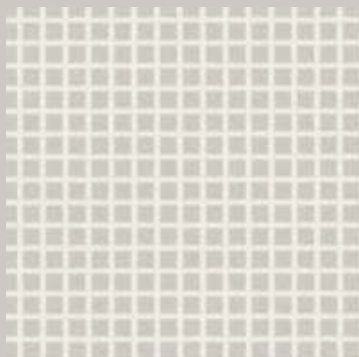
TEXTURE IN SCALA 1:1 - TEXTURE ARE FULL SCALE

GRAPH

NEUTRAL

R10 / DCOF>0,42

COLORI - COLORS



GP 003

PEI IV

50x50x1 cm - 20"x20"x $\frac{25}{64}$ "
25x25x1 cm - 10"x10"x $\frac{25}{64}$ "
10x25x1 cm - 4"x10"x $\frac{25}{64}$ "

Rettificato - Rectified



GP 004

PEI IV

50x50x1 cm - 20"x20"x $\frac{25}{64}$ "
25x25x1 cm - 10"x10"x $\frac{25}{64}$ "
10x25x1 cm - 4"x10"x $\frac{25}{64}$ "

Rettificato - Rectified

GIUNTI - JOINTS SUGGESTION

MAPEI 100 Withe

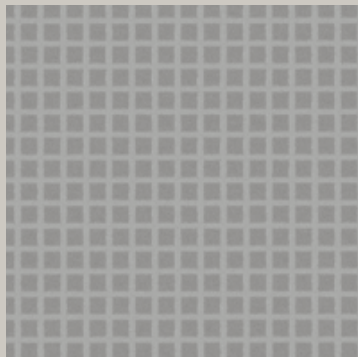
MAPEI 139 Pink Powder

MAPEI 170 Crocus Blue

MAPEI 111 Silver Grey

MAPEI 150 Yellow

LATICRETE 50 Sea Glass



GP 005

PEI IV

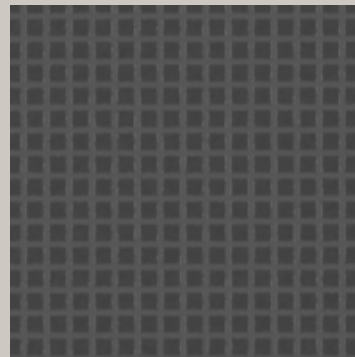
50x50x1 cm - 20"x20"x $\frac{25}{64}$ "
25x25x1 cm - 10"x10"x $\frac{25}{64}$ "
10x25x1 cm - 4"x10"x $\frac{25}{64}$ "

Rettificato - Rectified

MAPEI 110 Manhattan 2000

MAPEI 150 Yellow

LATICRETE 50 Sea Glass



GP 006

PEI III

50x50x1 cm - 20"x20"x $\frac{25}{64}$ "
25x25x1 cm - 10"x10"x $\frac{25}{64}$ "
10x25x1 cm - 4"x10"x $\frac{25}{64}$ "

Rettificato - Rectified

MAPEI 114 Anthracite

MAPEI 150 Yellow

LATICRETE 50 Sea Glass

TEXTURE IN SCALA 1:1 - TEXTURE ARE FULL SCALE

GRAPH

NEUTRAL

R10 / DCOF>0,42

COLORI - COLORS

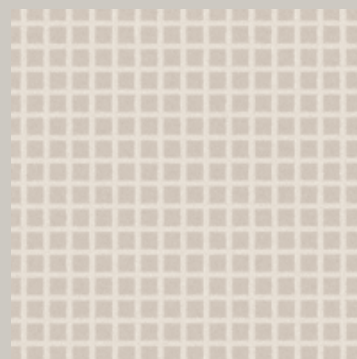


GP 007

PEI II

50x50x1 cm - 20"x20"x $\frac{25}{64}$ "
25x25x1 cm - 10"x10"x $\frac{25}{64}$ "
10x25x1 cm - 4"x10"x $\frac{25}{64}$ "

Rettificato - Rectified



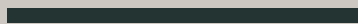
GP 008

PEI IV

50x50x1 cm - 20"x20"x $\frac{25}{64}$ "
25x25x1 cm - 10"x10"x $\frac{25}{64}$ "
10x25x1 cm - 4"x10"x $\frac{25}{64}$ "

Rettificato - Rectified

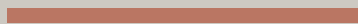
GIUNTI - JOINTS SUGGESTION



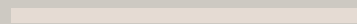
LATICRETE 22 Midnight Black



MAPEI 141 Caramel



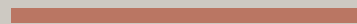
MAPEI 145 Terra di Siena



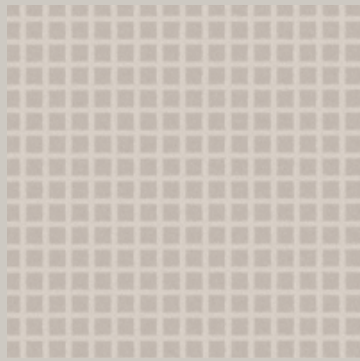
LATICRETE 16 Siltstone



MAPEI 141 Caramel



MAPEI 145 Terra di Siena

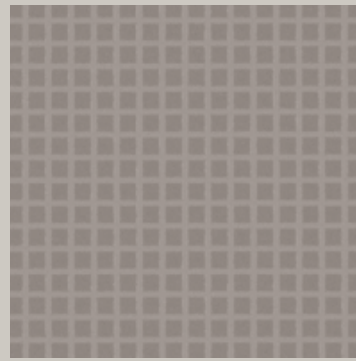


GP 009

PEI IV

50x50x1 cm - 20"x20"x $\frac{25}{64}$ "
25x25x1 cm - 10"x10"x $\frac{25}{64}$ "
10x25x1 cm - 4"x10"x $\frac{25}{64}$ "

Rettificato - Rectified

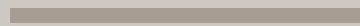


GP 010

PEI IV

50x50x1 cm - 20"x20"x $\frac{25}{64}$ "
25x25x1 cm - 10"x10"x $\frac{25}{64}$ "
10x25x1 cm - 4"x10"x $\frac{25}{64}$ "

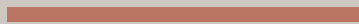
Rettificato - Rectified



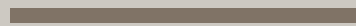
MAPEI 133 Sand



MAPEI 141 Caramel



MAPEI 145 Terra di Siena



MAPEI 134 Silk



MAPEI 141 Caramel



MAPEI 145 Terra di Siena

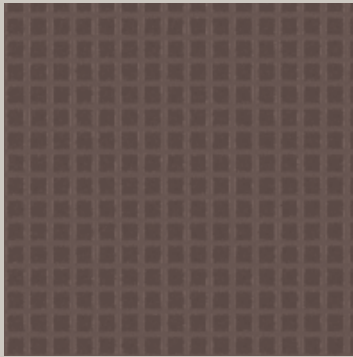
TEXTURE IN SCALA 1:1 - TEXTURE ARE FULL SCALE

GRAPH

NEUTRAL

R10 / DCOF>0,42

COLORI - COLORS

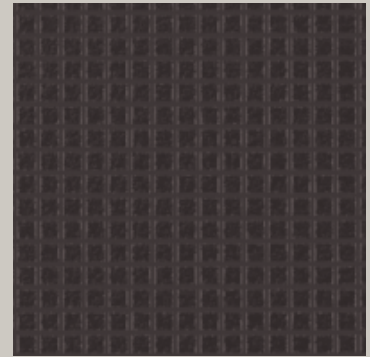


GP 011

PEI III

50x50x1 cm - 20"x20"x $\frac{25}{64}$ "
25x25x1 cm - 10"x10"x $\frac{25}{64}$ "
10x25x1 cm - 4"x10"x $\frac{25}{64}$ "

Rettificato - Rectified



GP 012

PEI III

50x50x1 cm - 20"x20"x $\frac{25}{64}$ "
25x25x1 cm - 10"x10"x $\frac{25}{64}$ "
10x25x1 cm - 4"x10"x $\frac{25}{64}$ "

Rettificato - Rectified

GIUNTI - JOINTS SUGGESTION

MAPEI 144 Chocolate

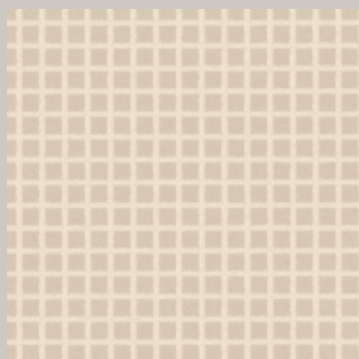
MAPEI 139 Pink Powder

MAPEI 170 Crocus Blue

MAPEI 149 Volcano Sand

MAPEI 139 Pink Powder

MAPEI 170 Crocus Blue

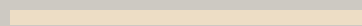


GP 013

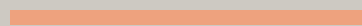
PEI IV

50x50x1 cm - 20"x20"x $\frac{25}{64}$ "
25x25x1 cm - 10"x10"x $\frac{25}{64}$ "
10x25x1 cm - 4"x10"x $\frac{25}{64}$ "

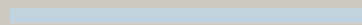
Rettificato - Rectified



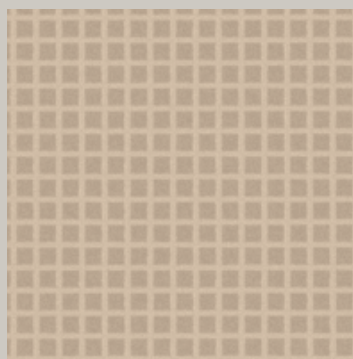
MAPEI 130 Jasmine



MAPEI 139 Pink Powder



MAPEI 170 Crocus Blue



GP 014

PEI IV

50x50x1 cm - 20"x20"x $\frac{25}{64}$ "
25x25x1 cm - 10"x10"x $\frac{25}{64}$ "
10x25x1 cm - 4"x10"x $\frac{25}{64}$ "

Rettificato - Rectified



MAPEI 132 Beige 2000



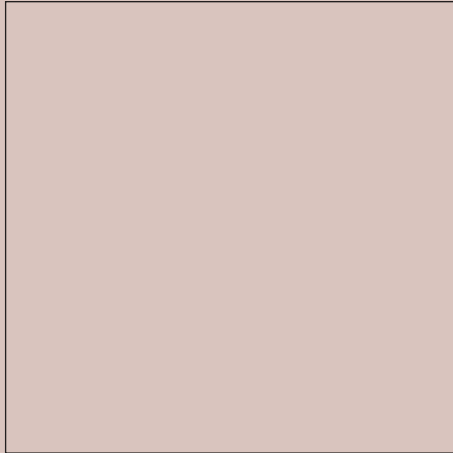
MAPEI 141 Caramel



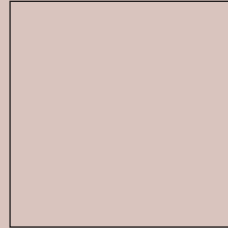
MAPEI 145 Terra di Siena

TEXTURE IN SCALA 1:1 - TEXTURE ARE FULL SCALE

50x50x1 cm
20"x20"x $\frac{25}{64}$ "

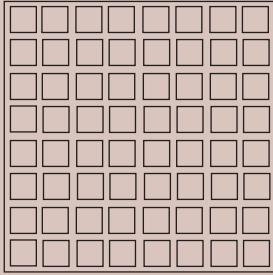


25x25x1 cm
10"x10"x $\frac{25}{64}$ "



10x25x1 cm
4"x10"x $\frac{25}{64}$ "



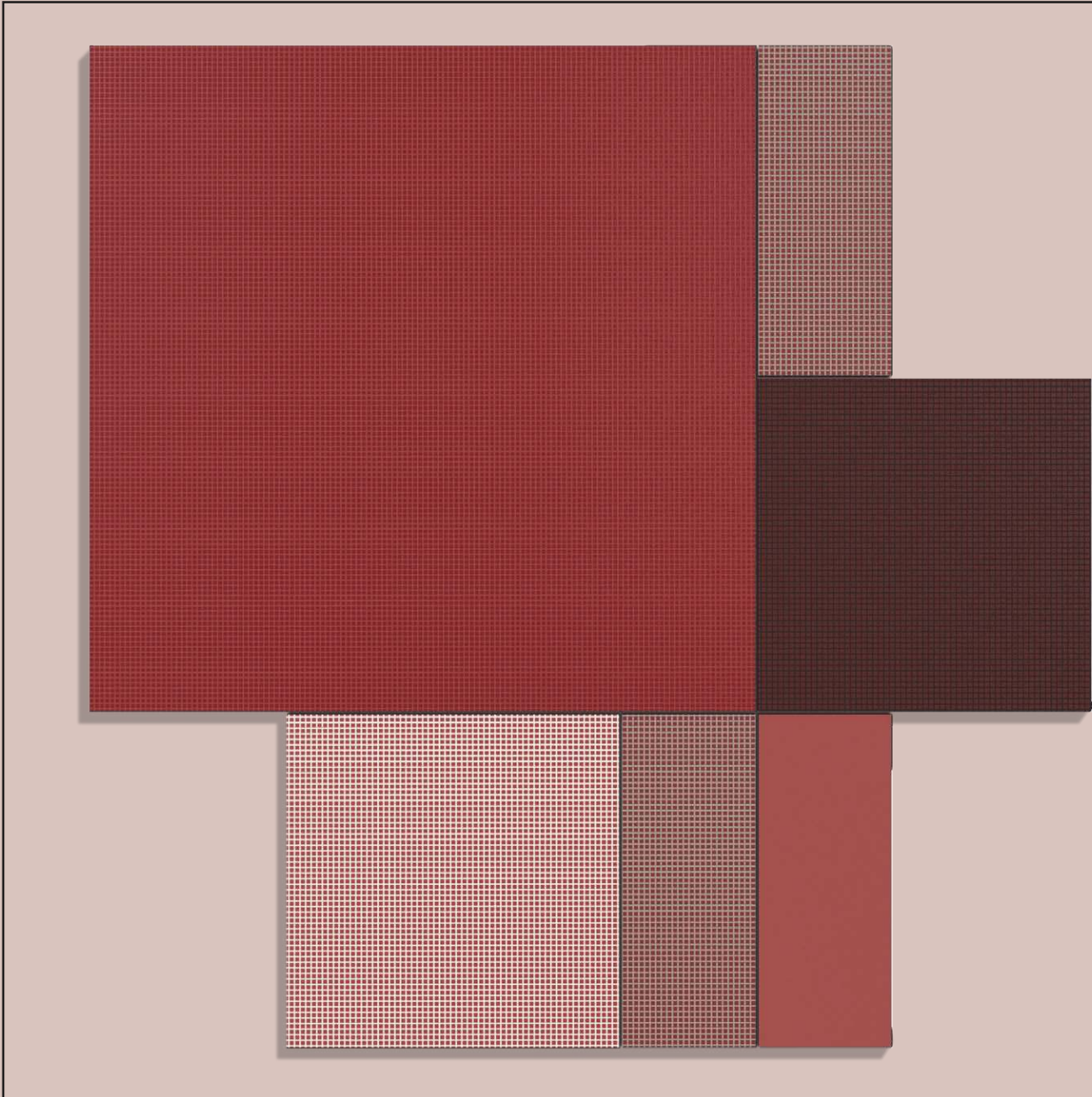


colori
GP 015 - GP 029

GRAPH

COLOR

R10 / DCOF > 0,42



GRAPH

COLOR

COLORI - COLORS



GP 015

PEI III

50x50x1 cm - 20"x20"x $\frac{25}{64}$ "

25x25x1 cm - 10"x10"x $\frac{25}{64}$ "

10x25x1 cm - 4"x10"x $\frac{25}{64}$ "

Rettificato - Rectified

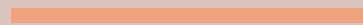
GIUNTI - JOINTS SUGGESTION



MAPEI 143 Terracotta



MAPEI 145 Terra di Siena



MAPEI 139 Pink Powder

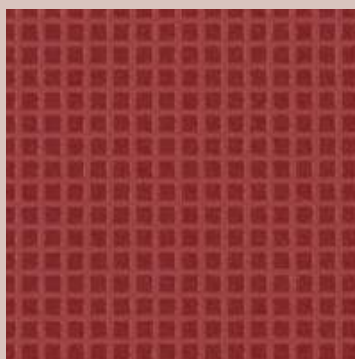
TEXTURE IN SCALA 1:1 - TEXTURE ARE FULL SCALE

GRAPH

COLOR

R10 / DCOF>0,42

COLORI - COLORS



GP 016

PEI III

50x50x1 cm - 20"x20"x $\frac{25}{64}$ "
25x25x1 cm - 10"x10"x $\frac{25}{64}$ "
10x25x1 cm - 4"x10"x $\frac{25}{64}$ "

Rettificato - Rectified



GP 017

PEI II

50x50x1 cm - 20"x20"x $\frac{25}{64}$ "
25x25x1 cm - 10"x10"x $\frac{25}{64}$ "
10x25x1 cm - 4"x10"x $\frac{25}{64}$ "

Rettificato - Rectified

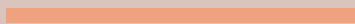
GIUNTI - JOINTS SUGGESTION



MAPEI 143 Terracotta



MAPEI 145 Terra di Siena



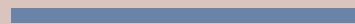
MAPEI 139 Pink Powder



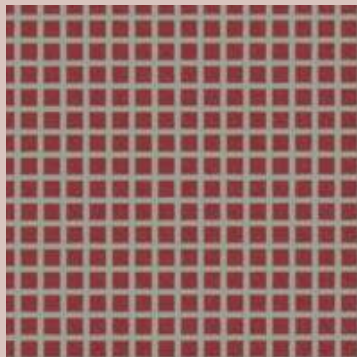
MAPEI 149 Volcano Sand



LATICRETE 46 Quarry Red



MAPEI 172 Space Blue



GP 018

PEI III

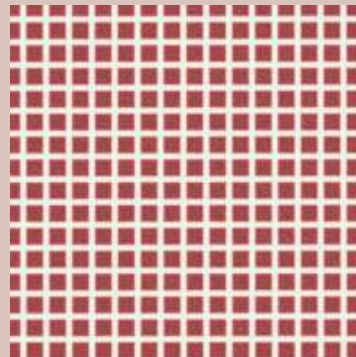
50x50x1 cm - 20"x20"x $\frac{25}{64}$ "
25x25x1 cm - 10"x10"x $\frac{25}{64}$ "
10x25x1 cm - 4"x10"x $\frac{25}{64}$ "

Rettificato - Rectified

MAPEI 112 Medium Grey

MAPEI 172 Space Blue

MAPEI 139 Pink Powder



GP 019

PEI IV

50x50x1 cm - 20"x20"x $\frac{25}{64}$ "
25x25x1 cm - 10"x10"x $\frac{25}{64}$ "
10x25x1 cm - 4"x10"x $\frac{25}{64}$ "

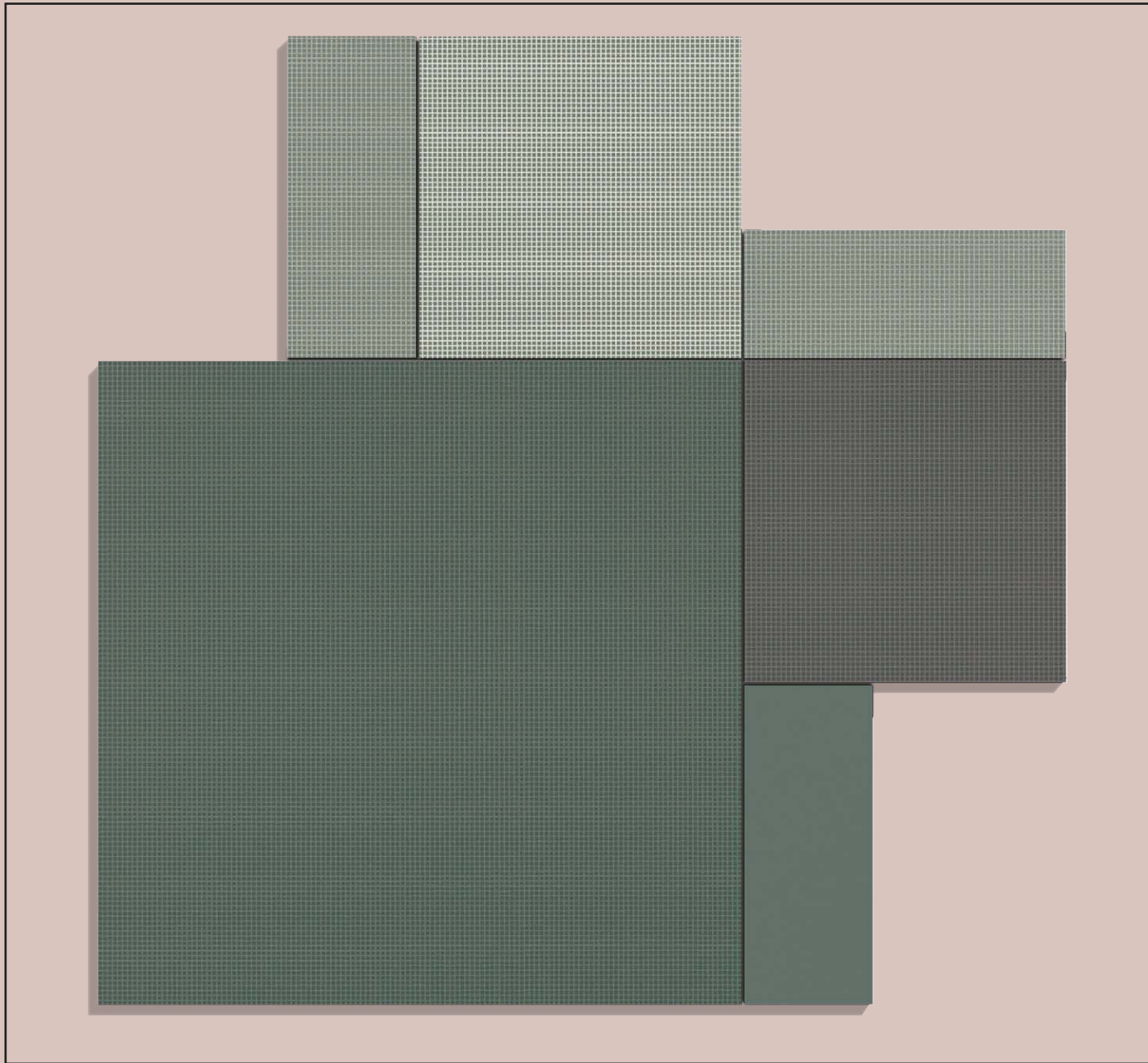
Rettificato - Rectified

MAPEI 132 Beige 2000

MAPEI 139 Pink Powder

MAPEI 170 Crocus Blue

TEXTURE IN SCALA 1:1 - TEXTURE ARE FULL SCALE



COLORI - COLORS



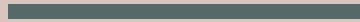
GP 020

PEI III

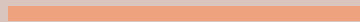
50x50x1 cm - 20"x20"x $\frac{25}{64}$ "
25x25x1 cm - 10"x10"x $\frac{25}{64}$ "
10x25x1 cm - 4"x10"x $\frac{25}{64}$ "

Rettificato - Rectified

GIUNTI - JOINTS SUGGESTION



MAPEI 174 Tornado



MAPEI 139 Pink Powder



MAPEI 162 Violet

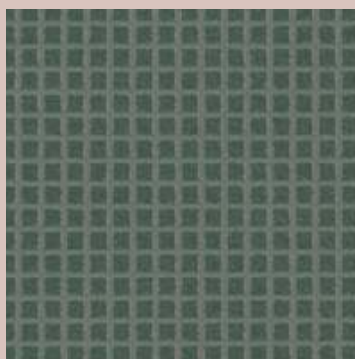
TEXTURE IN SCALA 1:1 - TEXTURE ARE FULL SCALE

GRAPH

COLOR

R10 / DCOF>0,42

COLORI - COLORS

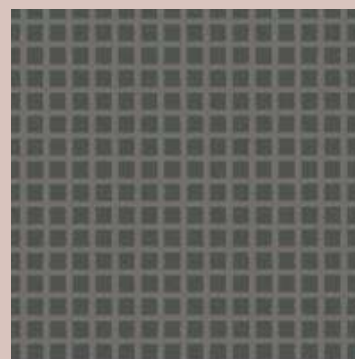


GP 021

PEI III

50x50x1 cm - 20"x20"x²⁵/₆₄"
25x25x1 cm - 10"x10"x²⁵/₆₄"
10x25x1 cm - 4"x10"x²⁵/₆₄"

Rettificato - Rectified



GP 022

PEI III

50x50x1 cm - 20"x20"x²⁵/₆₄"
25x25x1 cm - 10"x10"x²⁵/₆₄"
10x25x1 cm - 4"x10"x²⁵/₆₄"

Rettificato - Rectified

GIUNTI - JOINTS SUGGESTION

MAPEI 174 Tornado

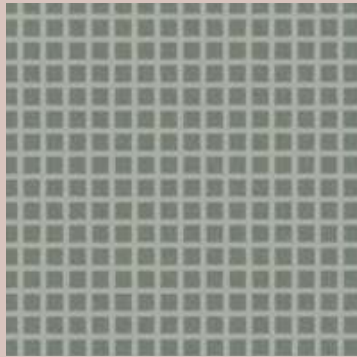
MAPEI 139 Pink Powder

MAPEI 171 Turquoise

MAPEI 136 Mud

MAPEI 150 Yellow

LATICRETE 53 Twilight Blue



GP 023

PEI IV

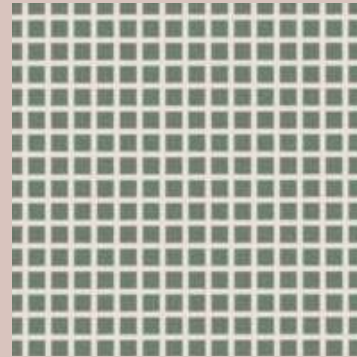
50x50x1 cm - 20"x20"x $\frac{25}{64}$ "
 25x25x1 cm - 10"x10"x $\frac{25}{64}$ "
 10x25x1 cm - 4"x10"x $\frac{25}{64}$ "

Rettificato - Rectified

MAPEI 113 Cement Grey

LATICRETE 50 Sea Glass

MAPEI 139 Pink Powder



GP 024

PEI III

50x50x1 cm - 20"x20"x $\frac{25}{64}$ "
 25x25x1 cm - 10"x10"x $\frac{25}{64}$ "
 10x25x1 cm - 4"x10"x $\frac{25}{64}$ "

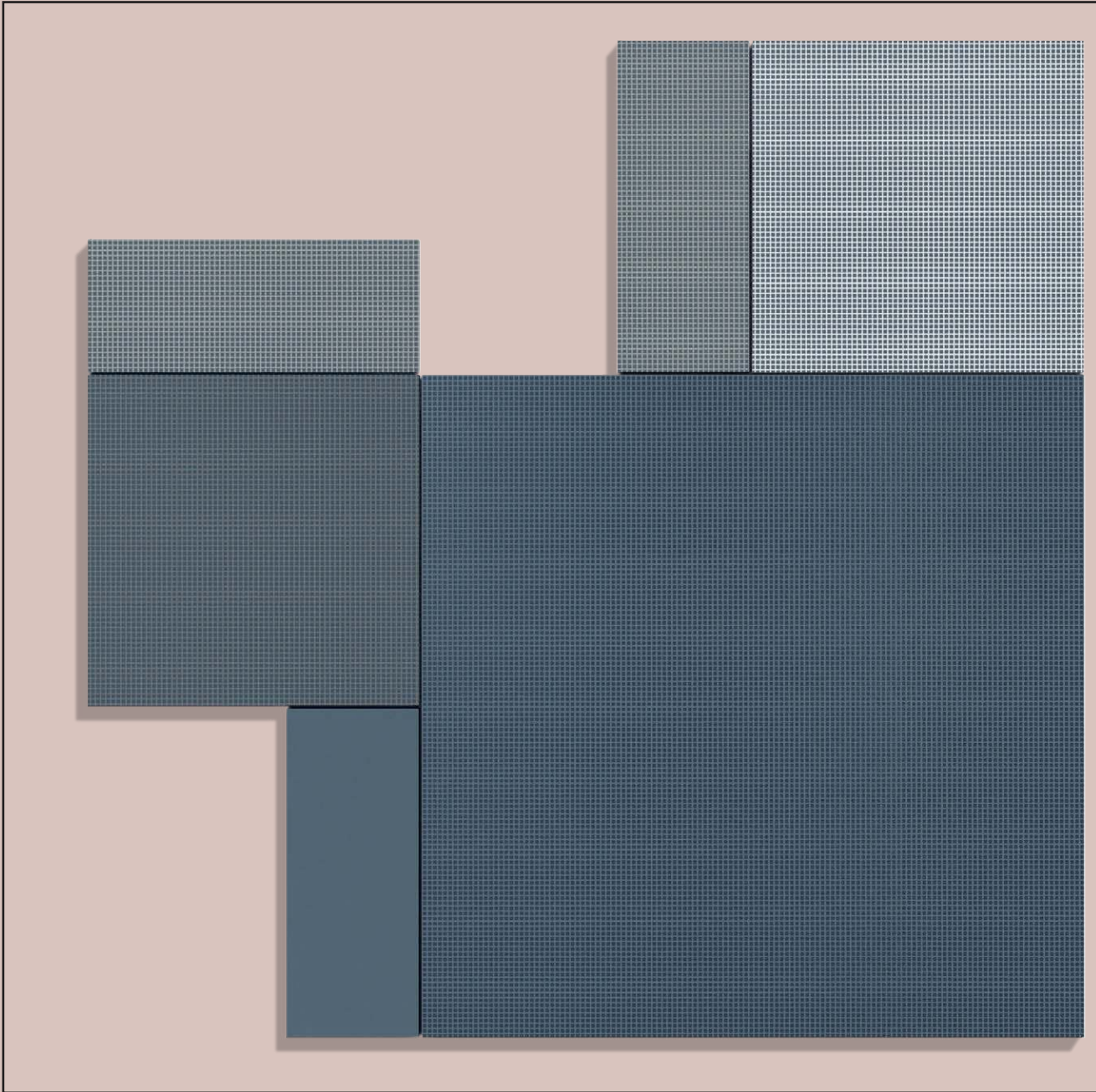
Rettificato - Rectified

MAPEI 110 Manhattan 2000

LATICRETE 50 Sea Glass

MAPEI 139 Pink Powder

TEXTURE IN SCALA 1:1 - TEXTURE ARE FULL SCALE



GRAPH

COLOR

COLORI - COLORS



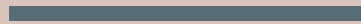
GP 025

PEI III

50x50x1 cm - 20"x20"x $\frac{25}{64}$ "
25x25x1 cm - 10"x10"x $\frac{25}{64}$ "
10x25x1 cm - 4"x10"x $\frac{25}{64}$ "

Rettificato - Rectified

GIUNTI - JOINTS SUGGESTION



LATICRETE 53 Twilight Blue



MAPEI 139 Pink Powder



MAPEI 143 Terracotta

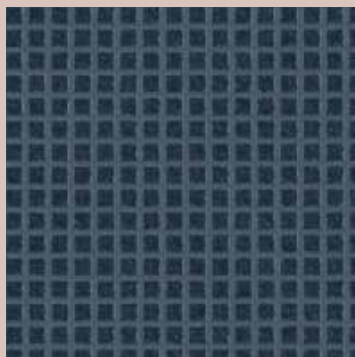
TEXTURE IN SCALA 1:1 - TEXTURE ARE FULL SCALE

GRAPH

COLOR

R10 / DCOF>0,42

COLORI - COLORS

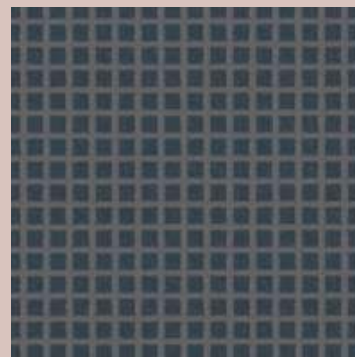


GP 026

PEI II

50x50x1 cm - 20"x20"x $\frac{25}{64}$ "
25x25x1 cm - 10"x10"x $\frac{25}{64}$ "
10x25x1 cm - 4"x10"x $\frac{25}{64}$ "

Rettificato - Rectified



GP 027

PEI II

50x50x1 cm - 20"x20"x $\frac{25}{64}$ "
25x25x1 cm - 10"x10"x $\frac{25}{64}$ "
10x25x1 cm - 4"x10"x $\frac{25}{64}$ "

Rettificato - Rectified

GIUNTI - JOINTS SUGGESTION

LATICRETE 53 Twilight Blue

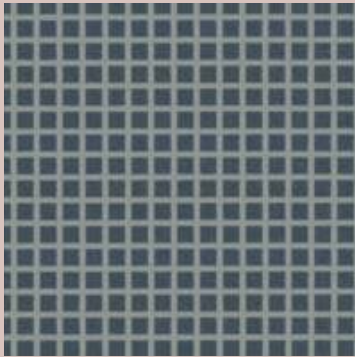
MAPEI 139 Pink Powder

MAPEI 143 Terracotta

MAPEI 174 Tornado

MAPEI 172 Space Blue

MAPEI 139 Pink Powder



GP 028

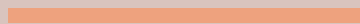
PEI III

50x50x1 cm - 20"x20"x $\frac{25}{64}$ "
 25x25x1 cm - 10"x10"x $\frac{25}{64}$ "
 10x25x1 cm - 4"x10"x $\frac{25}{64}$ "

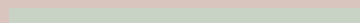
Rettificato - Rectified



MAPEI 112 Medium Grey



MAPEI 139 Pink Powder



LATICRETE 50 Sea Glass

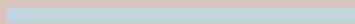


GP 029

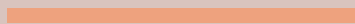
PEI IV

50x50x1 cm - 20"x20"x $\frac{25}{64}$ "
 25x25x1 cm - 10"x10"x $\frac{25}{64}$ "
 10x25x1 cm - 4"x10"x $\frac{25}{64}$ "

Rettificato - Rectified



MAPEI 170 Crocus Blue



MAPEI 139 Pink Powder

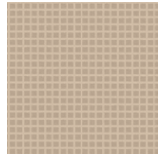


MAPEI 150 Yellow

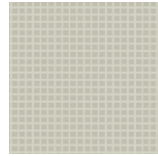
TEXTURE IN SCALA 1:1 - TEXTURE ARE FULL SCALE



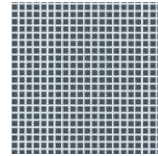
GP 011



GP 014



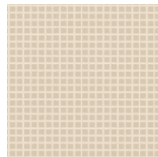
GP 001



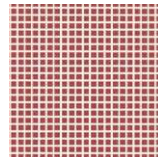
GP 029



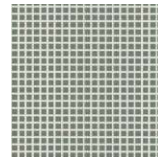
GP 011



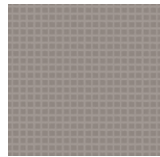
GP 013



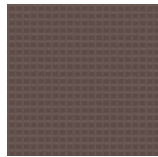
GP 019



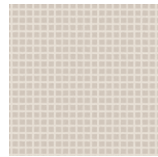
GP 024



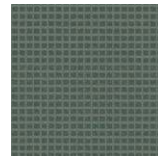
GP 010



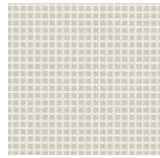
GP 011



GP 008



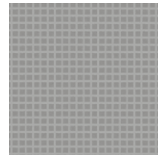
GP 021



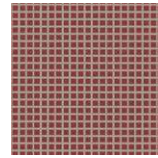
GP 003



GP 011



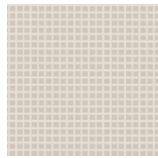
GP 005



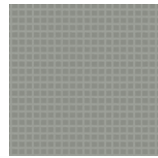
GP 018



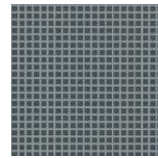
GP 012



GP 008



GP 002



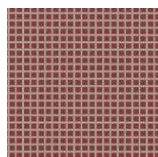
GP 028

ACCOSTAMENTI CROMATICI

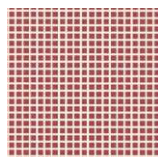
SUGGESTION FOR TILE COMBINATION



GP 017



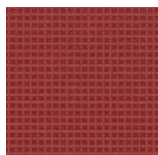
GP 018



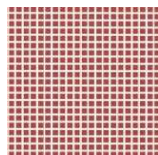
GP 019



GP 015



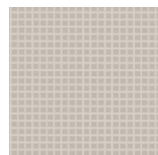
GP 016



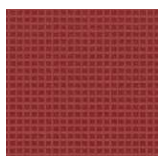
GP 019



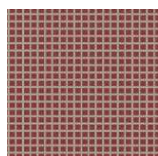
GP 012



GP 009



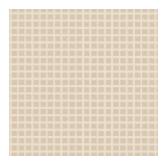
GP 016



GP 018



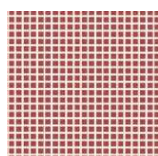
GP 011



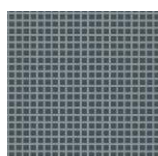
GP 013



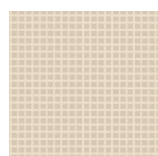
GP 017



GP 019



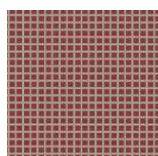
GP 028



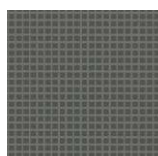
GP 013



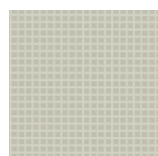
GP 017



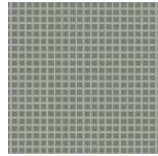
GP 018



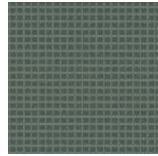
GP 022



GP 001



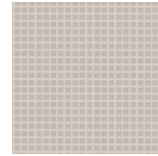
GP 023



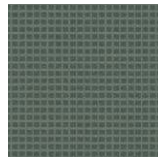
GP 021



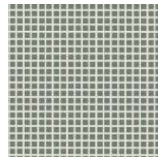
GP 020



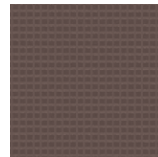
GP 009



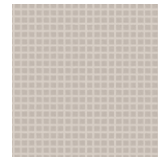
GP 021



GP 024



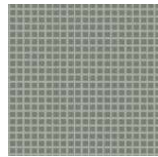
GP 011



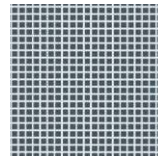
GP 009



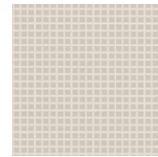
GP 020



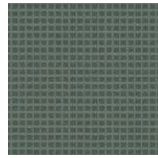
GP 023



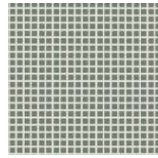
GP 029



GP 008



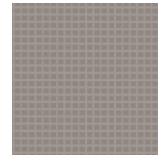
GP 021



GP 024



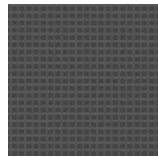
GP 017



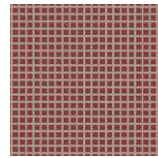
GP 010



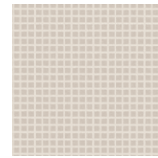
GP 020



GP 006



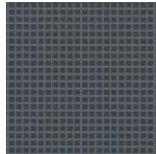
GP 018



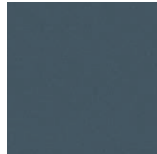
GP 008

ACCOSTAMENTI CROMATICI

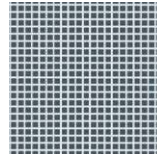
SUGGESTION FOR TILE COMBINATION



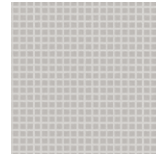
GP 027



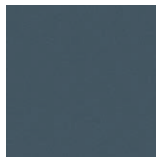
GP 025



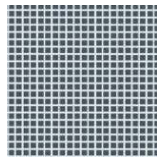
GP 029



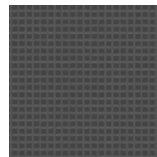
GP 004



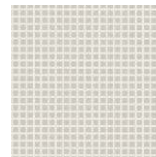
GP 025



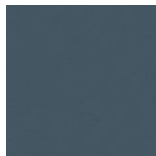
GP 029



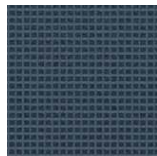
GP 006



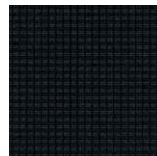
GP 003



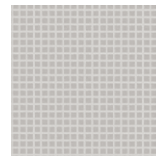
GP 025



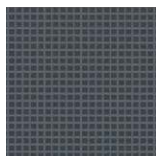
GP 026



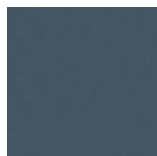
GP 007



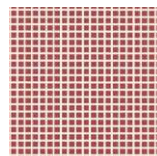
GP 004



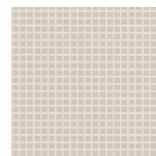
GP 027



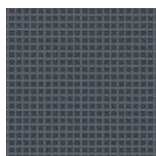
GP 025



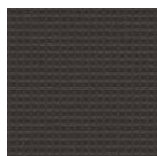
GP 019



GP 008



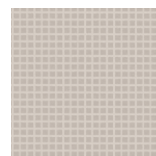
GP 027



GP 012



GP 017



GP 009











Voci di capitolato / Tender specifications

Piastrelle di ceramica pressate a secco con basso assorbimento di acqua ($0,5\% < E_b \leq 3\%$) Gruppo B1b - M - GL EN 14411:2012 appendice H.
 Glazed ceramic tiles, dry pressed with low water absorption ($0,5\% < E_b \leq 3\%$) Group B1b - M - GL EN 14411:2012 H appendix.

Dimensioni e qualità della superficie / Dimensions and surface quality

formato nominale nominal shape	dimensione di fabbricazione actual size	metodo di prova test methods	requisiti requirements	risultati Vogue Vogue results
50x50 cm (20"x20") 25x25 cm (10"x10") 10x25 cm (4"x10")	lati sides 500x500 mm 249x249 mm 98x249 mm	EN ISO 10545-2	lati sides $\pm 0,6\%$	lati sides $\pm 0,3\%$
	spessore thickness 10 mm		spessore thickness $\pm 5\%$	spessore thickness $\pm 4\%$
Rettilineità dei lati (superficie di esercizio) Straightness of sides (working surface)		EN ISO 10545-2	$\pm 0,5\%$	$\pm 0,4\%$
Ortogonalità Squareness		EN ISO 10545-2	$\pm 0,5\%$	$\pm 0,4\%$
Planarità della superficie Flatness		EN ISO 10545-2	$\pm 0,5\%$	$\pm 0,4\%$
Qualità della superficie Surface quality		EN ISO 10545-2	min. 95%	min. 95%






Proprietà fisiche / Physical properties

prova test	metodo di prova test methods	requisiti requirements	risultati Vogue Vogue results
 Massa d'acqua assorbita (%) Water absorption (%)	EN ISO 10545-3	$0,5\% < E_b \leq 3,0\%$	1,5 %
 Resistenza di rottura Tensile strength	spessore thickness $\geq 7,5$ mm EN ISO 10545-4	1.100 N min.	> 1.700 N
 Modulo di rottura Modulus of rupture	EN ISO 10545-4	30 N/mm ² min.	> 40 N/mm ²
 P.E.I. Resistenza all'abrasione (P.E.I.) Abrasion resistance (P.E.I.)	EN ISO 10545-7	riportare la classe di abrasione quote the abrasion class	vedi pagina prodotto refer to product page
 Coefficiente di dilatazione termica lineare Coefficient of linear thermal expansion	EN ISO 10545-8	metodo di prova disponibile test method available	$< 6,9 \times 10^{-6}/^{\circ}\text{C}$
 Resistenza agli sbalzi termici Thermal shock resistance	EN ISO 10545-9	metodo di prova disponibile test method available	garantita guaranteed
 Resistenza al cavillo Crazing resistance	EN ISO 10545-11	richiesta required	garantita guaranteed
 Resistenza al gelo Frost resistance	EN ISO 10545-12	metodo di prova disponibile test method available	garantita guaranteed
 Dilatazione dovuta all'umidità Expansion to humidity	EN ISO 10545-10	metodo di prova disponibile test method available	$< 0,04\%$
 Resistenza all'urto Impact resistance	EN ISO 10545-5	metodo di prova disponibile test method available	> 0,6 (vedi appendice P) (see P appendix)






SCHEDE TECNICHE

TECHNICAL CHARTS



Proprietà antiscivolo / *Non-slip properties* (escluso - *except* GP 015 - GP 020 - GP 025)

prova test	metodo di prova test methods	requisiti requirements	risultati Vogue Vogue results
 determinazione proprietà antiscivolo: Determination of the anti-slip characteristics:	DIN 51130 grado scivolosità non-skid characteristics	R9 aderenza normale normal adhesion $6^\circ \leq \alpha \leq 10^\circ$ R10 aderenza media medium adhesion $10^\circ \leq \alpha \leq 19^\circ$ R11 aderenza elevata high adhesion $19^\circ \leq \alpha \leq 27^\circ$ $\alpha =$ angolo di inclinazione inclination angle	R10
 determinazione proprietà antiscivolo di zone bagnate a piedi nudi: Determination of the anti-slip characteristics for barefoot wet areas:	DIN 51097 angolo inclinazione (°) inclination angle (°)	A aderenza media medium adhesion $\geq 12 < 18$ B aderenza elevata high adhesion $\geq 18 < 24$ C aderenza forte strong adhesion ≥ 24	A
 Pendulum test UK	BS 7976-2:2002	metodo di prova disponibile - test method available	dry >36 wet -
 DCOF – Dynamic Coefficient of Friction (Wet Areas Only)	ANSI A 137.1.:2012		> 0,42
 coefficiente di attrito: (1) asciutto (cuoio) (2) bagnato (gomma) Coefficient of friction: (1) dry (leather) (2) wet (Rubber)	B.C.R.A.	$\mu \leq 0,19$ scivolosità pericolosa dangerous slipperiness $0,20 \leq \mu \leq 0,39$ scivolosità eccessiva extreme slipperiness $0,40 \leq \mu \leq 0,74$ attrito soddisfacente satisfactory friction $\mu \geq 0,75$ attrito eccellente excellent friction	(1) $\mu > 0,45$ (2) $\mu > 0,52$

Proprietà chimiche / *Chemical properties*

prova test	metodo di prova test methods	requisiti requirements	risultati Vogue Vogue results
 Resistenza alle macchie Stain resistance	EN ISO 10545-14	classe 3 min.	3 min. (vedi appendice P) (see P appendix)
 Resistenza ai prodotti chimici d'uso domestico ed agli additivi per piscina Resistance to chemical products for housekeeping and to the additives used in swimming-pools	EN ISO 10545-13	GB min.	GB min.
 Resistenza ad acidi e basi a bassa concentrazione Resistance to acids and bases at low concentrations	EN ISO 10545-13	indicata dal produttore indicated by the producer	GLB min.
 Resistenza ad acidi e basi ad alta concentrazione Resistance to acids and bases at high concentrations	EN ISO 10545-13	metodo di prova disponibile test method available	GHB min.
 Pb Cd Cessione di piombo e cadmio Lead and cadmium losses	EN ISO 10545-15	metodo di prova disponibile test method available	disponibile a richiesta available if required

Altre prove / *Other tests*

prova test	metodo di prova test methods	requisiti requirements	risultati Vogue Vogue results
 Resistenza dei colori alla luce Colour resistance to light	DIN 51094	non previsto not foreseen	garantita guaranteed
 Reazione al fuoco Reaction to the fire	senza prova without test	decisione 96/603/CE decision 96/603/CE	classe A1

Giunto e compatibilità dei formati / *Modularity and laying*

Per ottenere un corretto risultato di posa il materiale deve essere posato con un giunto non inferiore a 2 mm (UNI 11493:2013).
To obtain a correct laying result the material should be laid with joints of no less than 2 mm (UNI 11493:2013).



www.ceramicavogue.it

made in italy

Art direction: Marcante-Testa (UdA)

Immagini 3D: R3Design - Officine Mimesi

Stampa: Arti Grafiche Biellesi (BI)

Ufficio stampa: info@sabrinagiacchetti.it

Stampato in Italia Novembre 2017

Ceramica VOGUE
è un marchio di

altaeco

GRUPPO INDUSTRIALE



Socio Ordinario
del GBC Italia



Ceramica VOGUE

SS 143 Loc. Vergnasco

13882 Cerrione (BI) ITALIA

T. +39.015.672.1

Fax +39.015.671.626 (Italia)

Fax +39.015.671.352 (Export)

info@cervogue.com

Altaeco USA

7121 Austin Ave. Nilas, Illinois 60714

info.usa@altaeco.com

Ceramica
VOGUE

TILES FOR ARCHITECTURE

Ceramica
VOGUE

TILES FOR ARCHITECTURE