

VETRITE[®]
tile

SICIS[®]

VETRITE[®] tile

Nascono i “piccoli” formati per offrire la possibilità di dare alle pareti una veste geometrica in un unico colore da scegliere tra le 25 tonalità proposte o in nuances di colori abbinata ai numerosi pattern per armonizzare ogni ambiente a discrezione del progettista.

La molteplicità dei formati rende facile la collocazione in svariate tipologie di ambienti che vanno dal semplice bagno, alle pareti cucina fino ad arrivare a strutture architettoniche importanti quali musei o grandi alberghi oltre alla possibilità di creare dettagli più contenuti all'interno di nicchie o di piccoli spazi espressamente immaginati su misura, dagli Interior Design per case o ambienti pubblici.

Sostituisce brillantemente carte da parati, stucchi di vario genere, materiali da rivestimento naturali e sintetici per abbracciare ogni stile e ogni nazionalità.

A variety of small formats conceived to create infinite geometric patterns for wall surfaces. Choose from one color to 25, combine sizes, colors and shapes to create truly unique wall murals.

The multiplicity of formats and its technical characteristics makes it easy to place in a variety of environments ranging from simple bathrooms to kitchen walls to major architectural structures such as lobbies, museums or hotels. The smooth surface is easy to maintain and clean.

The smaller formats allow application in diminutive spaces such as niches, highlighting and detailing interesting jewel box works of art.

A modern solution which brilliantly replaces wallpaper, stucco, natural and synthetic finishing materials for all styles and tastes.



NUOVE EVOLUZIONI PER
IL RIVESTIMENTO
New evolutions for coverings



INDICE

Index

6 FORMATI
Dimensions

8 25 COLORI DELLA VETRITE
25 Colors of the Vetrite Tile

10 Ambienti
Ambiances

124 GAMMA COLORI
Key Colors

126 FINITURE
Finishes

128 DECORATI
Decorated

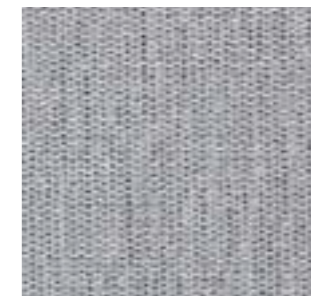
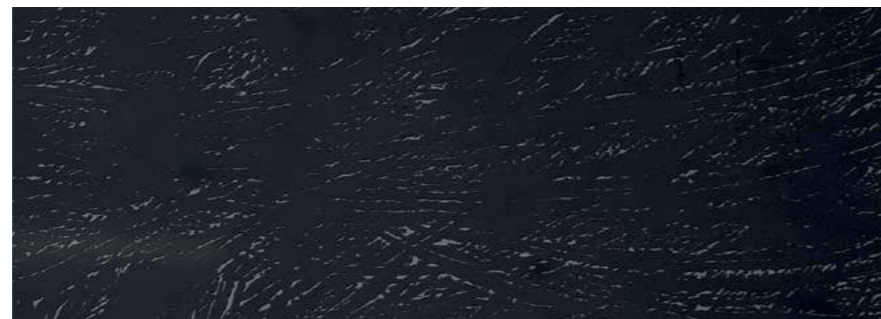
132 LISTELLI
Mouldings

134 PROPOSTE ABBINAMENTI
Matching Proposals

136 APPLICAZIONI / UTILIZZI
Applications / Usages

140 INDICE PATTERN
Pattern Index

148 CARATTERISTICHE TECNICHE
Technical Characteristics



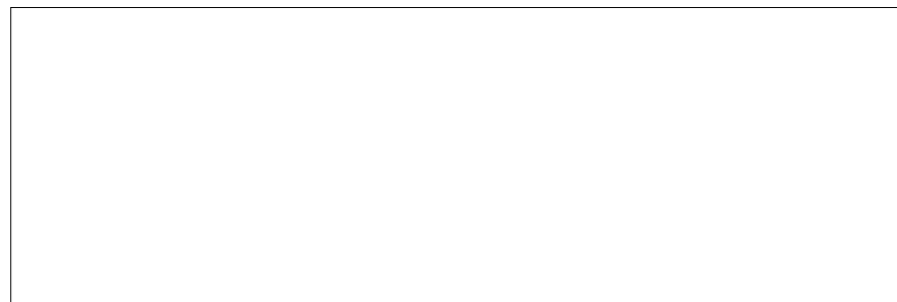
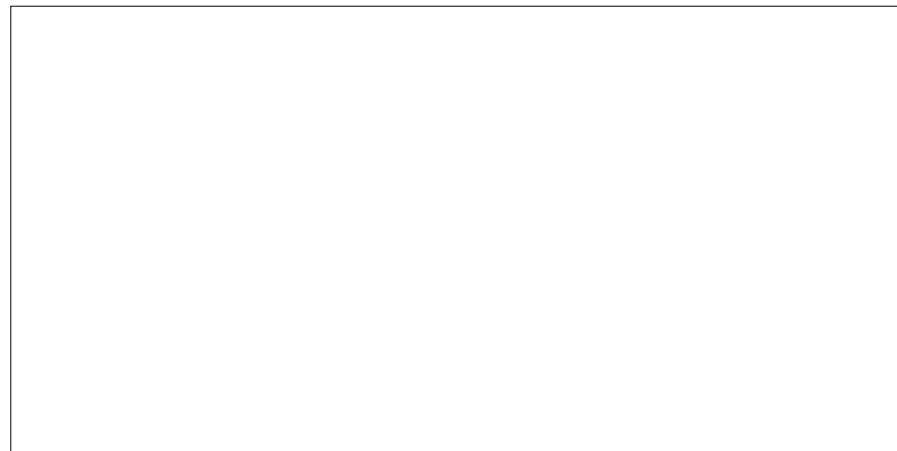
6 FORMATI

Dimensions

Su richiesta tutti i formati sono disponibili in versione bisellata o con finitura satinata.
All the formats are available either with beveled edges or in satinated finish.

29,6x59,3cm

11⁵ 8" x 23³ 8"



19,7x59,3cm

7³ 4" x 23³ 8"

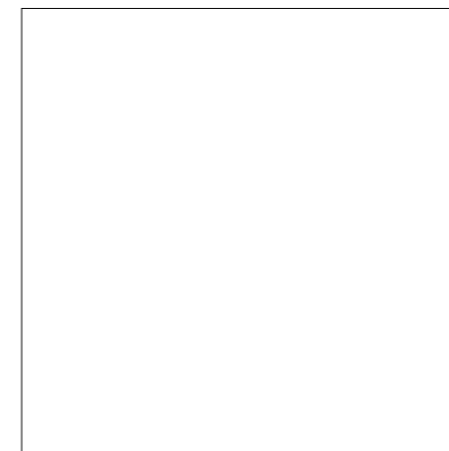
9,8x19,7cm

3⁷ 8" x 7³ 4"



29,6x89cm

11⁵ 8" x 35"

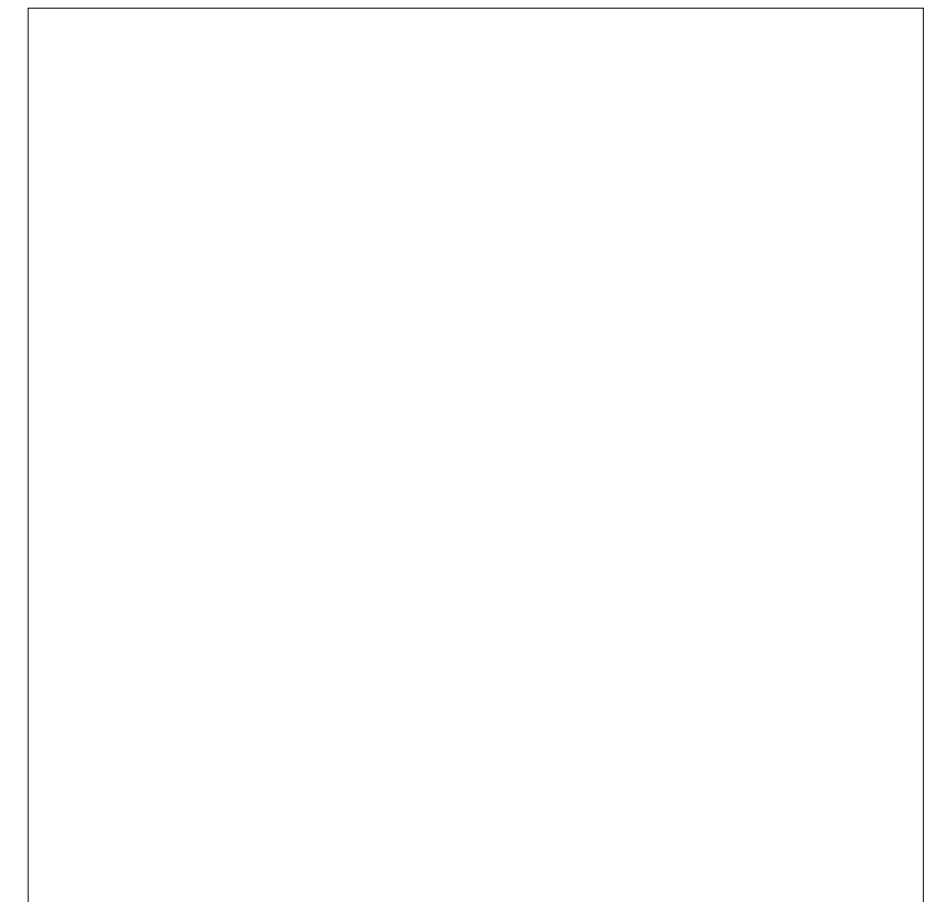


29,6x29,6cm

11⁵ 8" x 11⁵ 8"

59,3x59,3cm

23³ 8" x 23³ 8"



25 **COLORI DELLA VETRITETILE**

Colors of the Vetrite Tile

I toni dei campioni sono da considerarsi indicativi.
Sample colours are considered indicative.

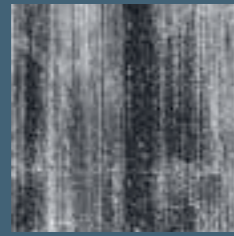


ANTIQUE BLUE

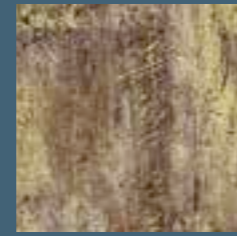
COLORI ED ELEMENTI UTILIZZATI NEL PATTERN *Colors and elements in the pattern*



1 Antique Blue



2 Fuliggine



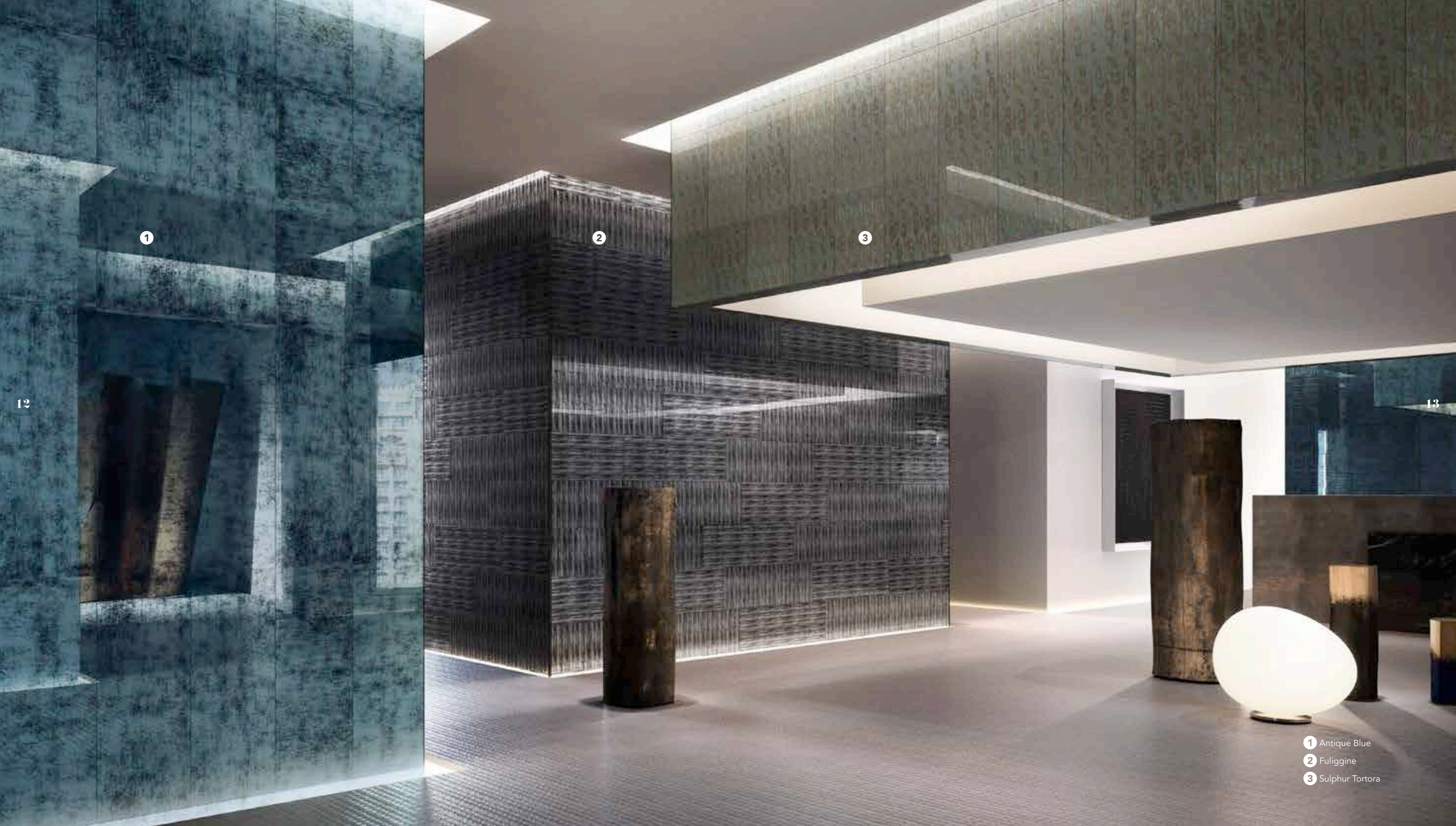
3 Sulphur Tortora

10



11

1 Antique Blue



1

2

3

12

13

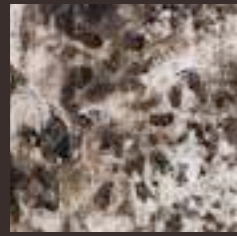
1 Antique Blue

2 Fuliggine

3 Sulphur Tortora

PISAC: TOBACCO / FEATHER GREY

COLORI ED ELEMENTI UTILIZZATI NEL PATTERN
Colors and elements in the pattern



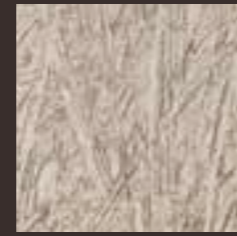
Boheme Grey

- 1 A: 1PZ
- B: 1PZ
- C: 1PZ



Feather Grey

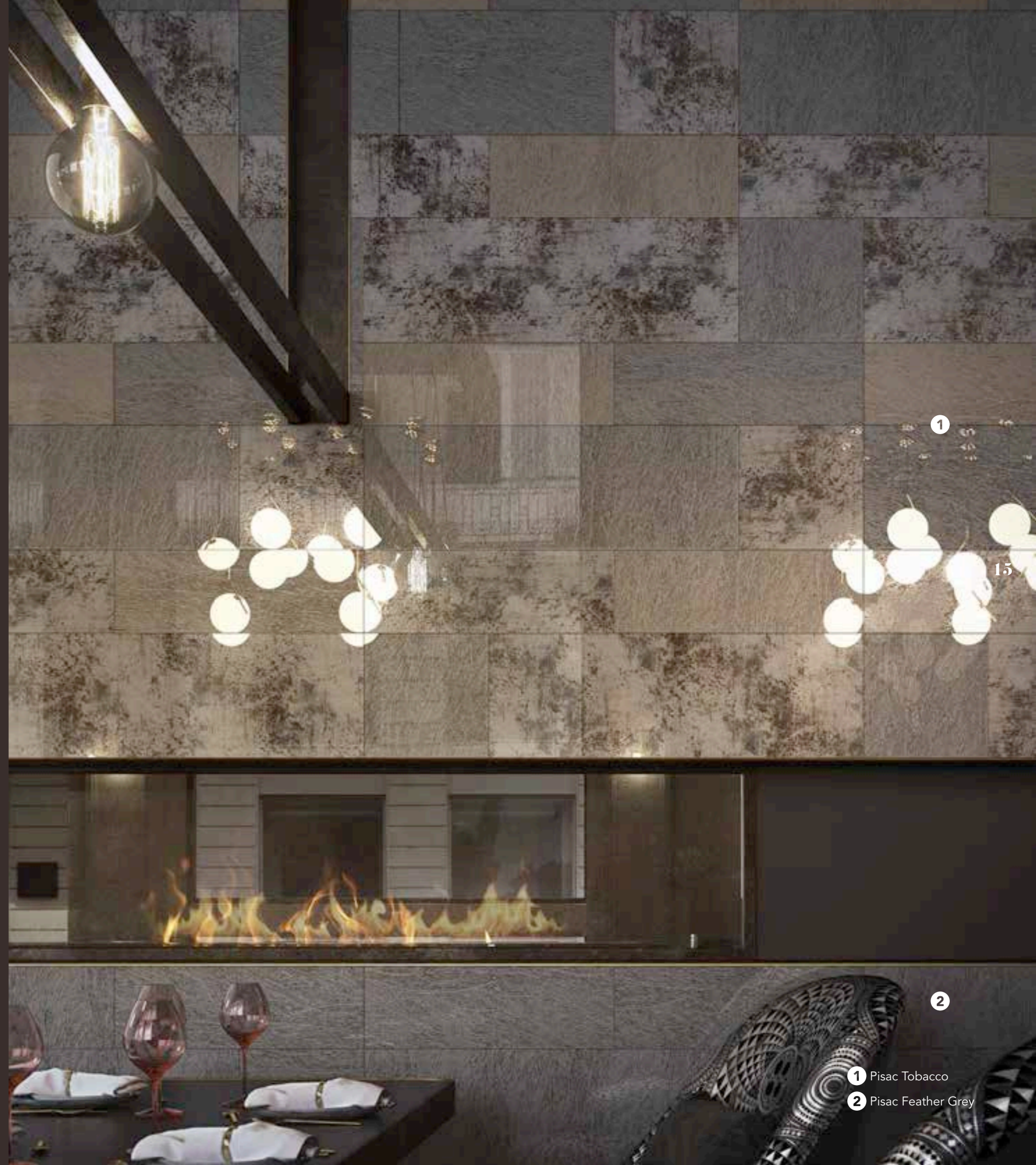
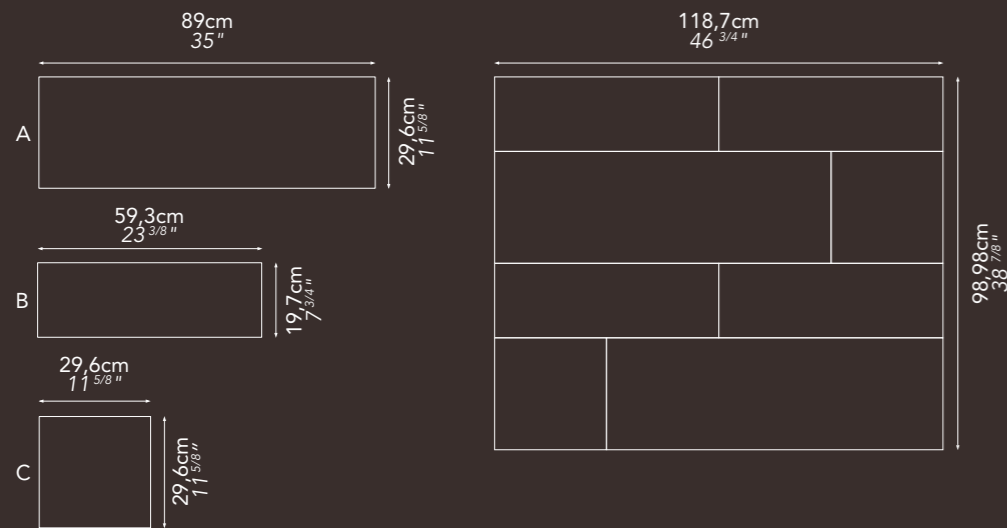
- 1 A: 1PZ
- B: 1PZ
- C: 1PZ



Feather Cipria

- 1 B: 2PZ

14



1

15

2

- 1 Pisac Tobacco
- 2 Pisac Feather Grey



6

1

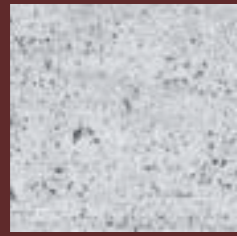
17

2

- 1 Pisac Tobacco
- 2 Pisac Feather Grey

MIX MYSTRAS

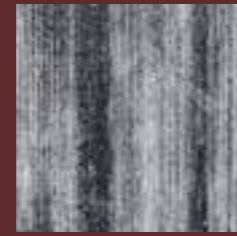
COLORI ED ELEMENTI UTILIZZATI NEL PATTERN *Colors and elements in the pattern*



Pergamino Grey
50 %

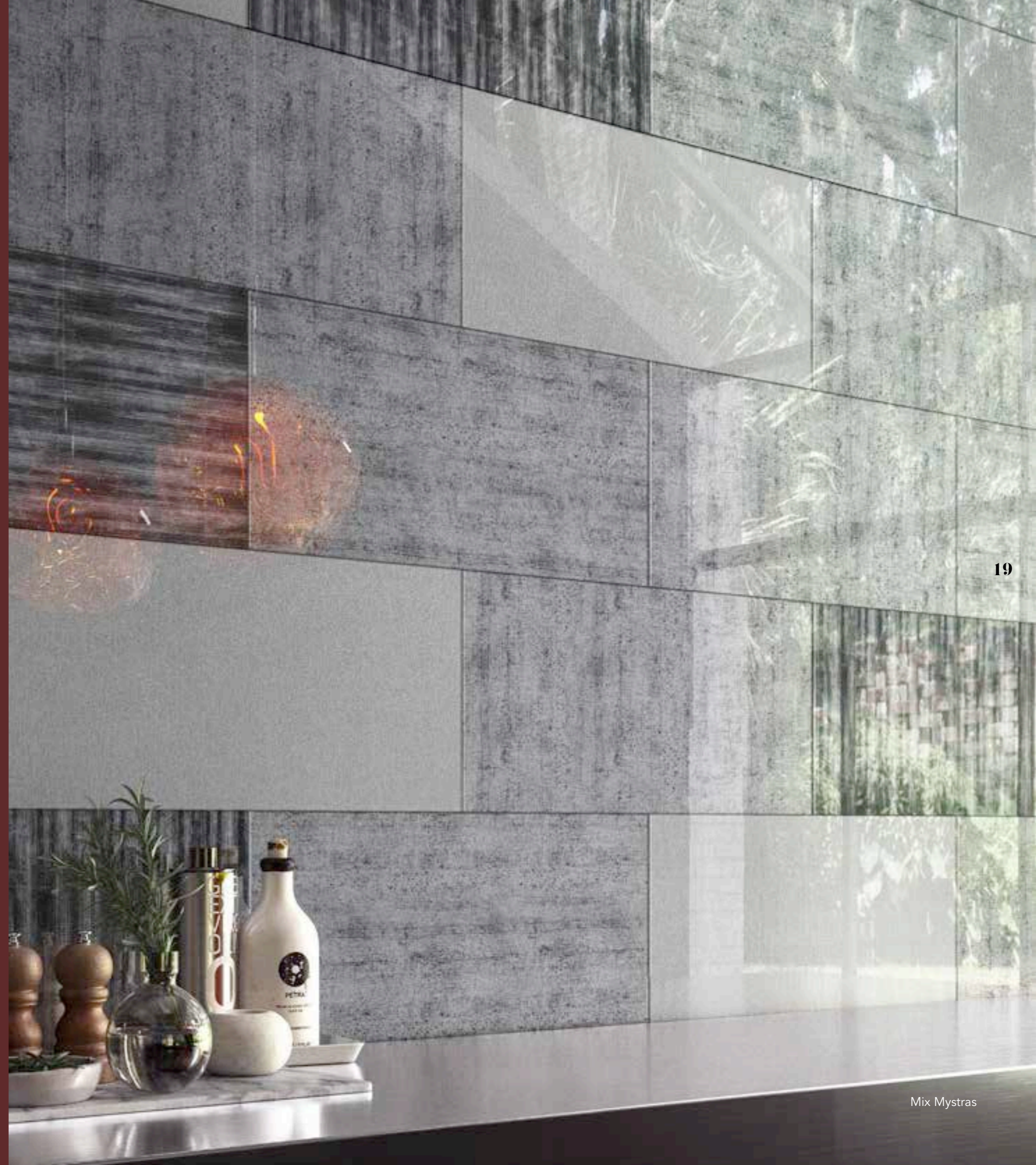


Tela White
25 %



Fuligine
25 %

18

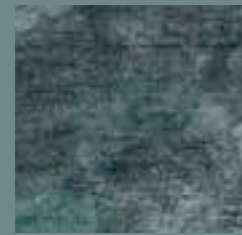


19



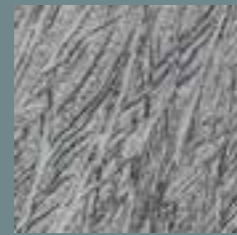
TROY: PELTRO MUD / FEATHER GREY TELA WHITE

COLORI ED ELEMENTI UTILIZZATI NEL PATTERN
Colors and elements in the pattern



Peltro Mud

- 1 A: 2PZ
B: 5PZ
C: 2PZ



Feather Grey

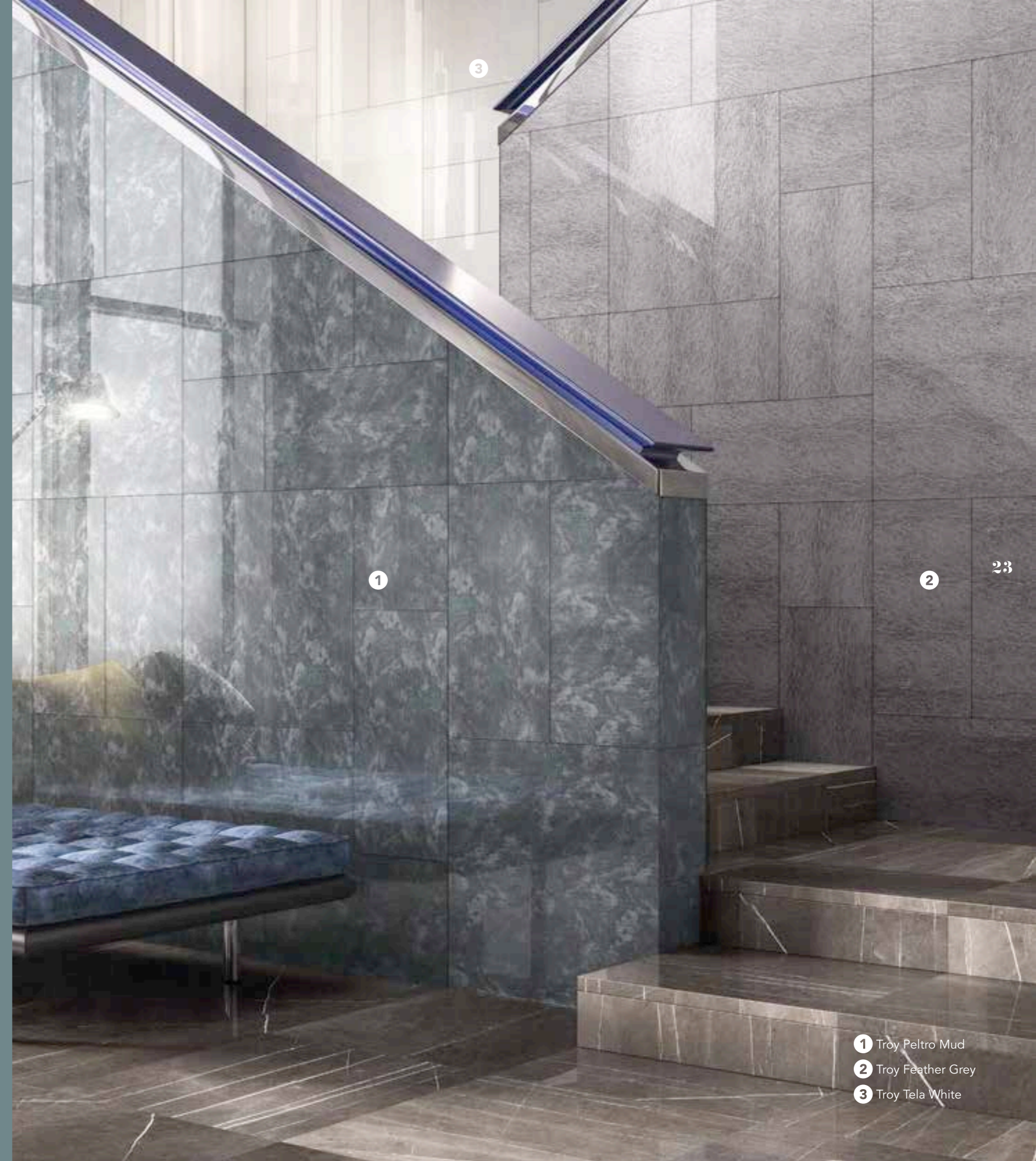
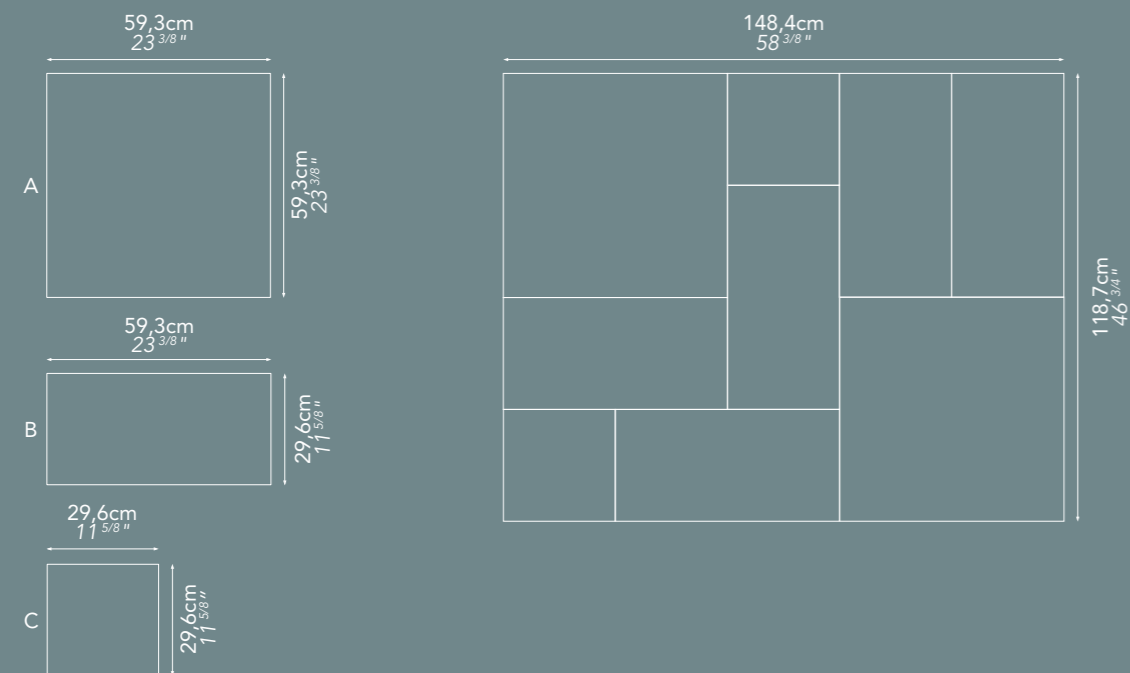
- 2 A: 2PZ
B: 5PZ
C: 2PZ



Tela White

- 3 A: 2PZ
B: 5PZ
C: 2PZ

22



- 1 Troy Peltro Mud
2 Troy Feather Grey
3 Troy Tela White

23



- 1 Troy Peltro Mud
- 2 Troy Feather Grey
- 3 Troy Tela White

TIPÓN: TORTORA / FEATHER CIPRIA

COLORI ED ELEMENTI UTILIZZATI NEL PATTERN
Colors and elements in the pattern



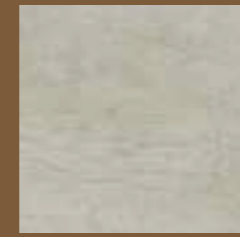
Feather Cipria

- 1 A: 3PZ
- B: 1PZ
- C: 1PZ
- D: 1PZ



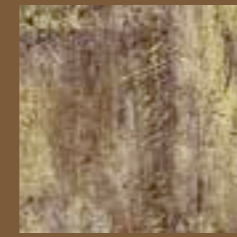
Elephant Charcoal

- 1 A: 3PZ
- B: 1PZ
- C: 1PZ
- D: 1PZ



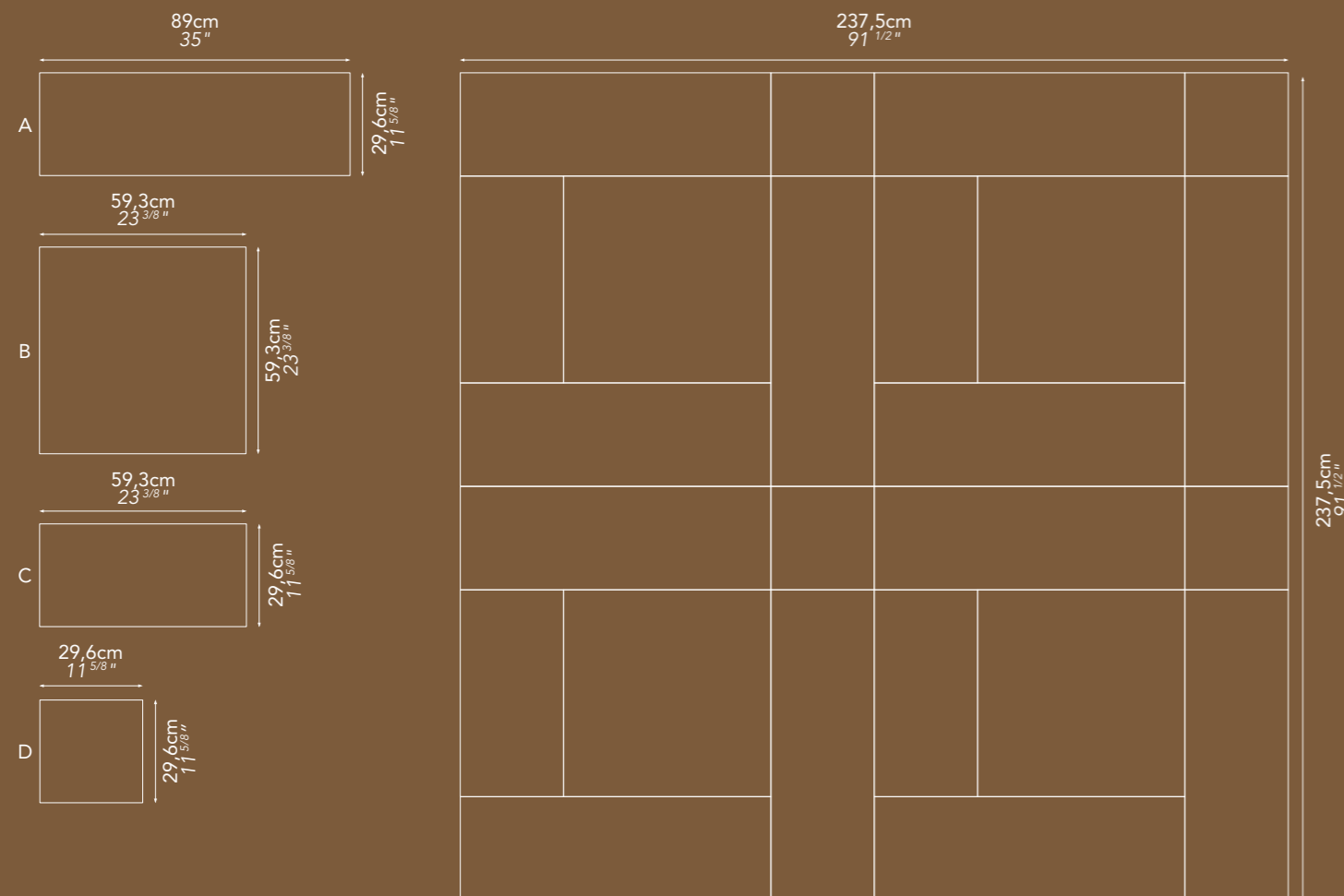
Suede Cream

- 1 A: 3PZ
- B: 1PZ
- C: 1PZ
- D: 1PZ



Sulphur Tortora

- 1 A: 3PZ
- B: 1PZ
- C: 1PZ
- D: 1PZ





28

1

2

1

2

29

1 Tipón Tortora

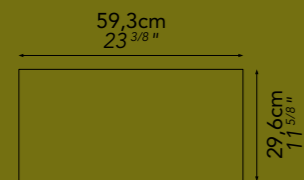
2 Tipón Feather Cípria

SULPHUR TORTORA

COLORI ED ELEMENTI UTILIZZATI NEL PATTERN
Colors and elements in the pattern



Sulphur Tortora



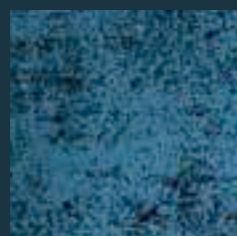


TAGLI DI LUCE
Slices of Light



UGARIT ANTIQUE BLUE

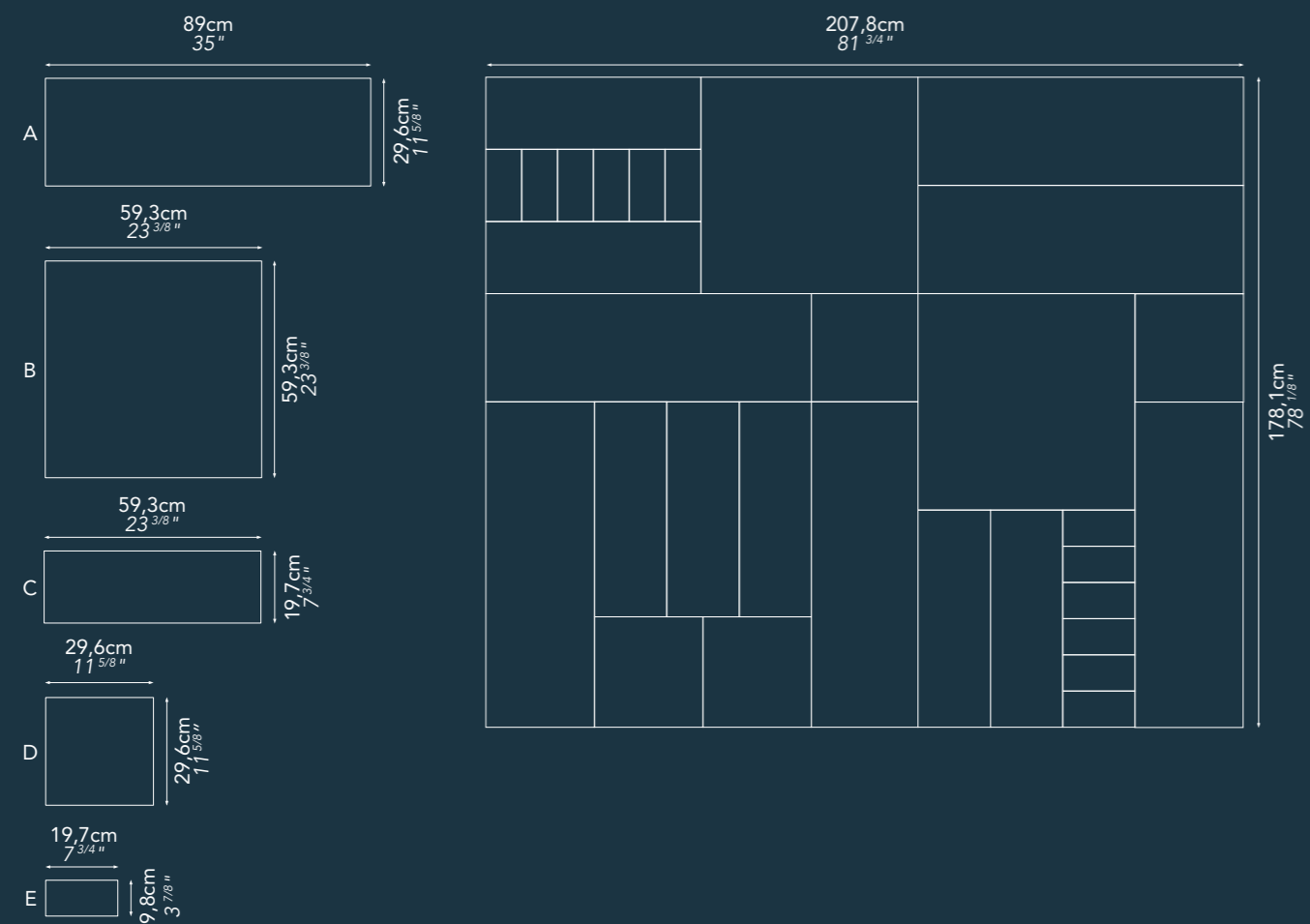
COLORI ED ELEMENTI UTILIZZATI NEL PATTERN
Colors and elements in the pattern



Antique Blue

- A: 6PZ
- B: 2PZ
- C: 7PZ
- D: 4PZ
- E: 12PZ

36



37



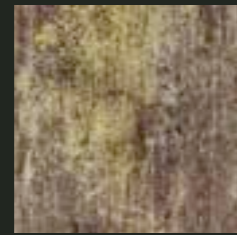
KELASURI TORTORA

COLORI ED ELEMENTI UTILIZZATI NEL PATTERN *Colors and elements in the pattern*



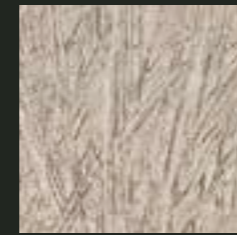
Elephant Tortora

1 B: 3PZ
C: 1PZ



Sulphur Tortora

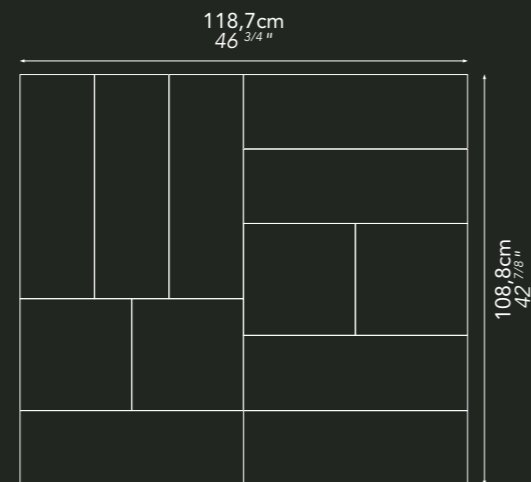
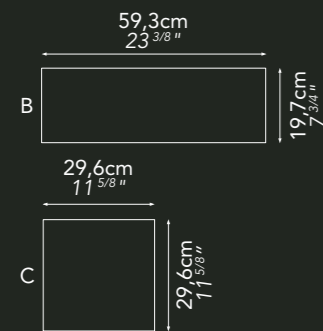
1 B: 1PZ
C: 1PZ



Feather Cipria

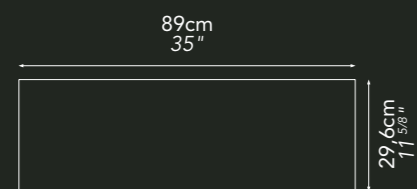
1 B: 2PZ
C: 2PZ

40



1 Kelasuri Tortora

2 Sulphur Tortora



1 Kelasuri Tortora

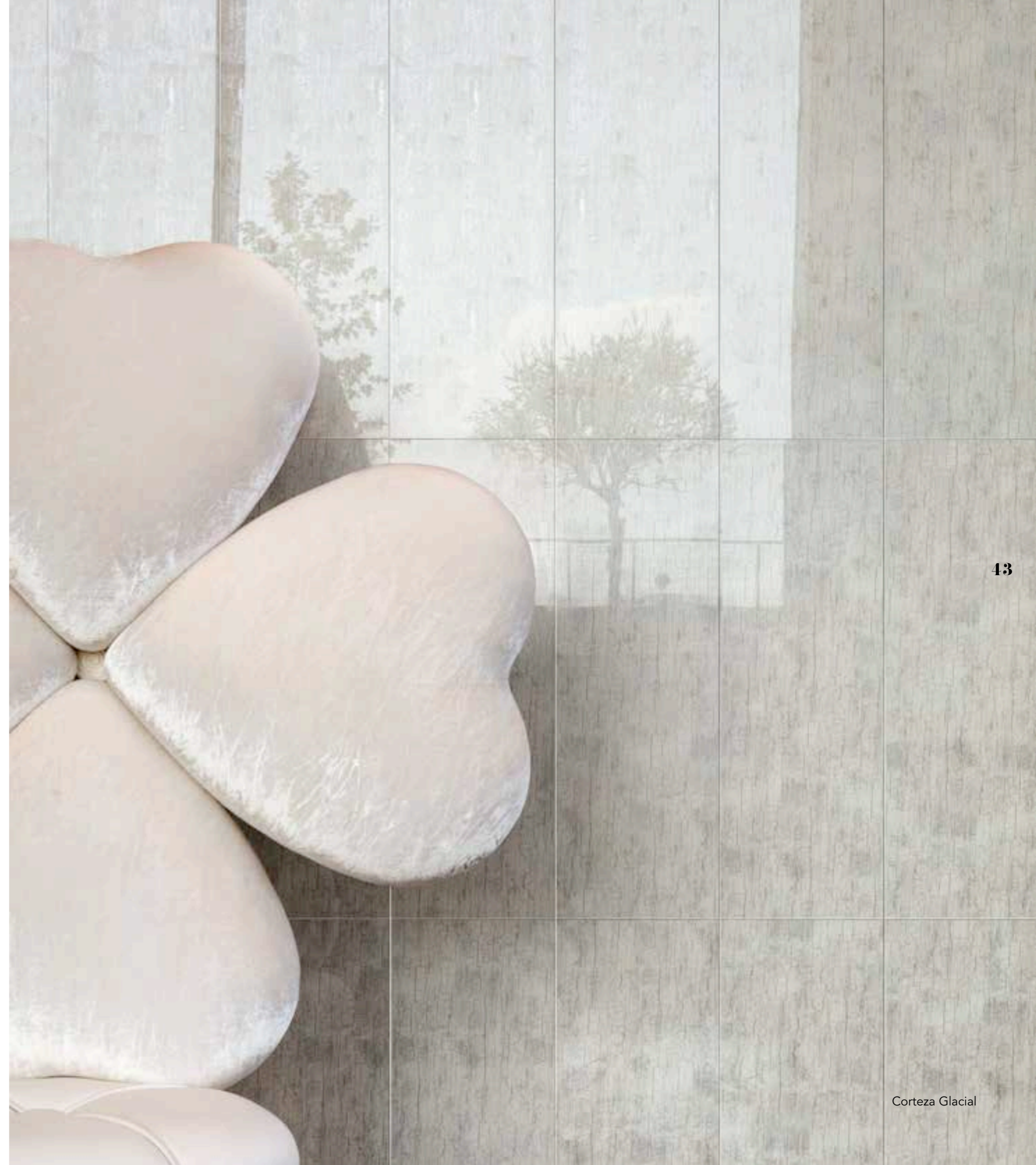
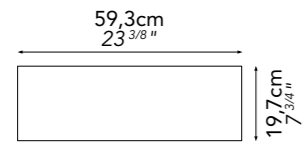
2 Sulphur Tortora

CORTEZA GLACIAL

COLORIED ELEMENTI UTILIZZATI NEL PATTERN
Colors and elements in the pattern



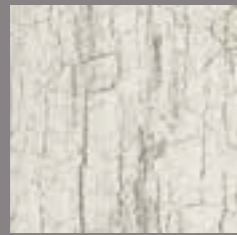
Corteza Glacial





LHASA GLACIAL

COLORI ED ELEMENTI UTILIZZATI NEL PATTERN *Colors and elements in the pattern*



Corteza Glacial

1 A:24PZ



Antique

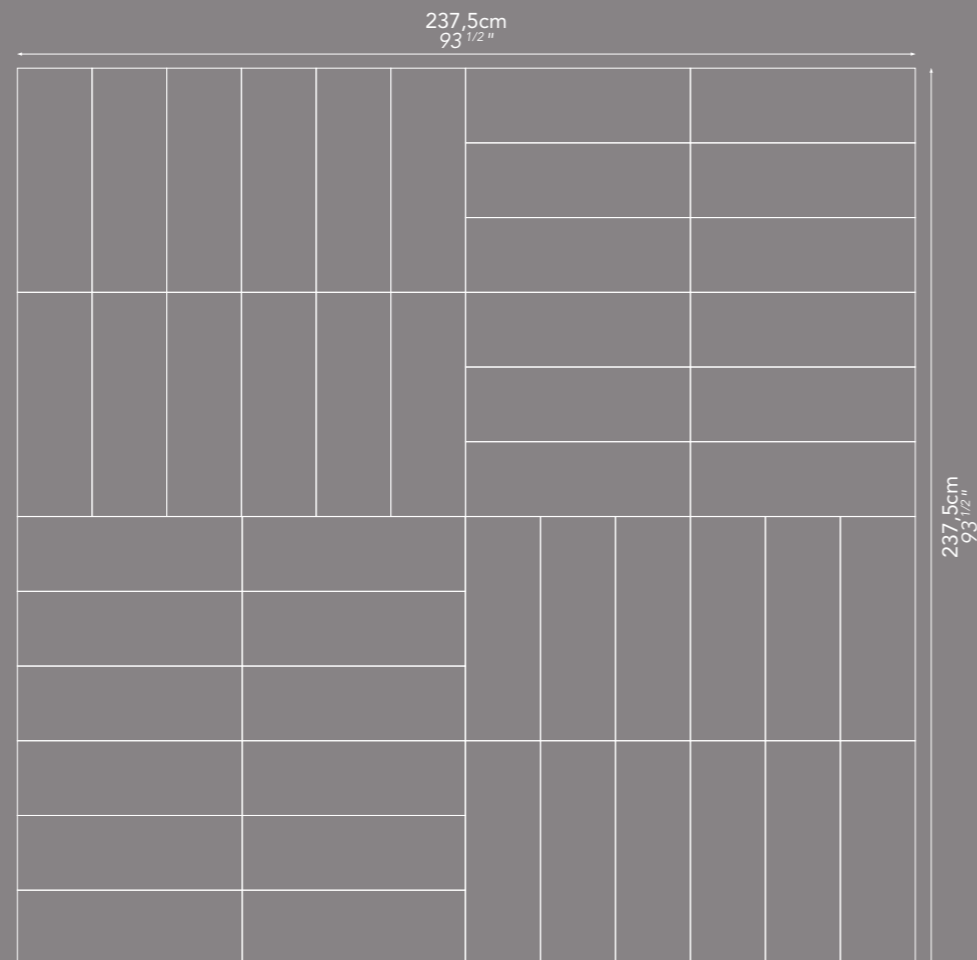
1 A:24PZ

46



1 Lhasa Glacial

2 Corteza Glacial



237,5cm
93 1/2"

47



1 Lhasa Glacial

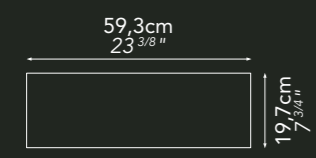
2 Corteza Glacial

TIMBER GLACIAL

COLORI ED ELEMENTI UTILIZZATI NEL PATTERN
Colors and elements in the pattern

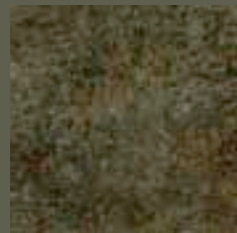


Timber Glacial



COPÁN EFESTO GREEN

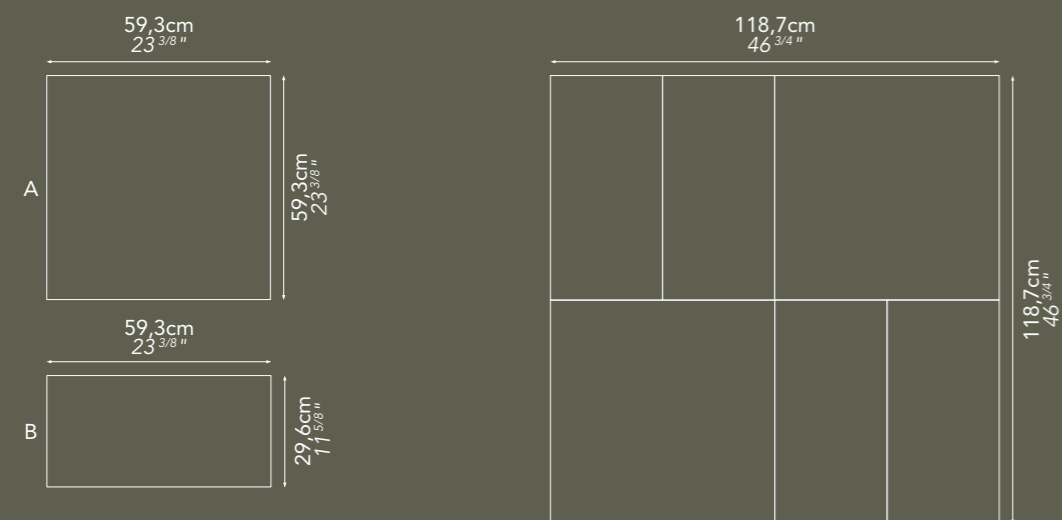
COLORI ED ELEMENTI UTILIZZATI NEL PATTERN
Colors and elements in the pattern



Efesto Green

A: 2PZ
B: 4PZ

50



51



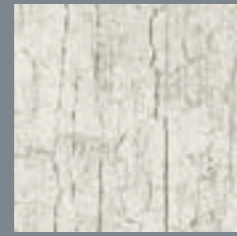


CAMELOT CLASSIC

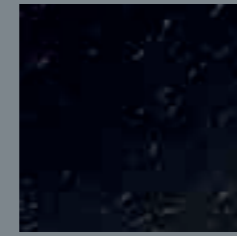
COLORI ED ELEMENTI UTILIZZATI NEL PATTERN *Colors and elements in the pattern*



Tela White
B: 4PZ



Corteza Glacial
B: 4PZ

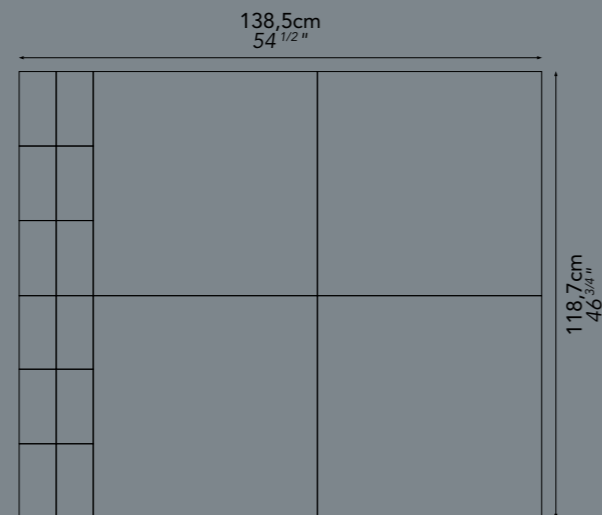
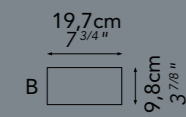
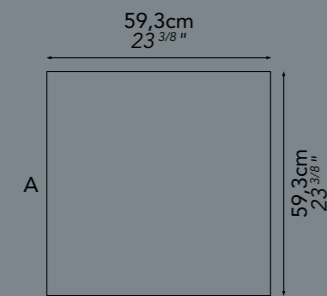


Feather Black
B: 4PZ



Fuliggine
A: 4PZ

54



55



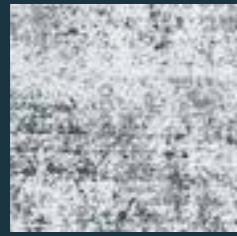


2

1

CLAVUM ANTIQUE

COLORI ED ELEMENTI UTILIZZATI NEL PATTERN
Colors and elements in the pattern



Antique

58



59

IPOSTILO GLACIAL

COLORIED ELEMENTI UTILIZZATI NEL PATTERN *Colors and elements in the pattern*



Elephant Panna

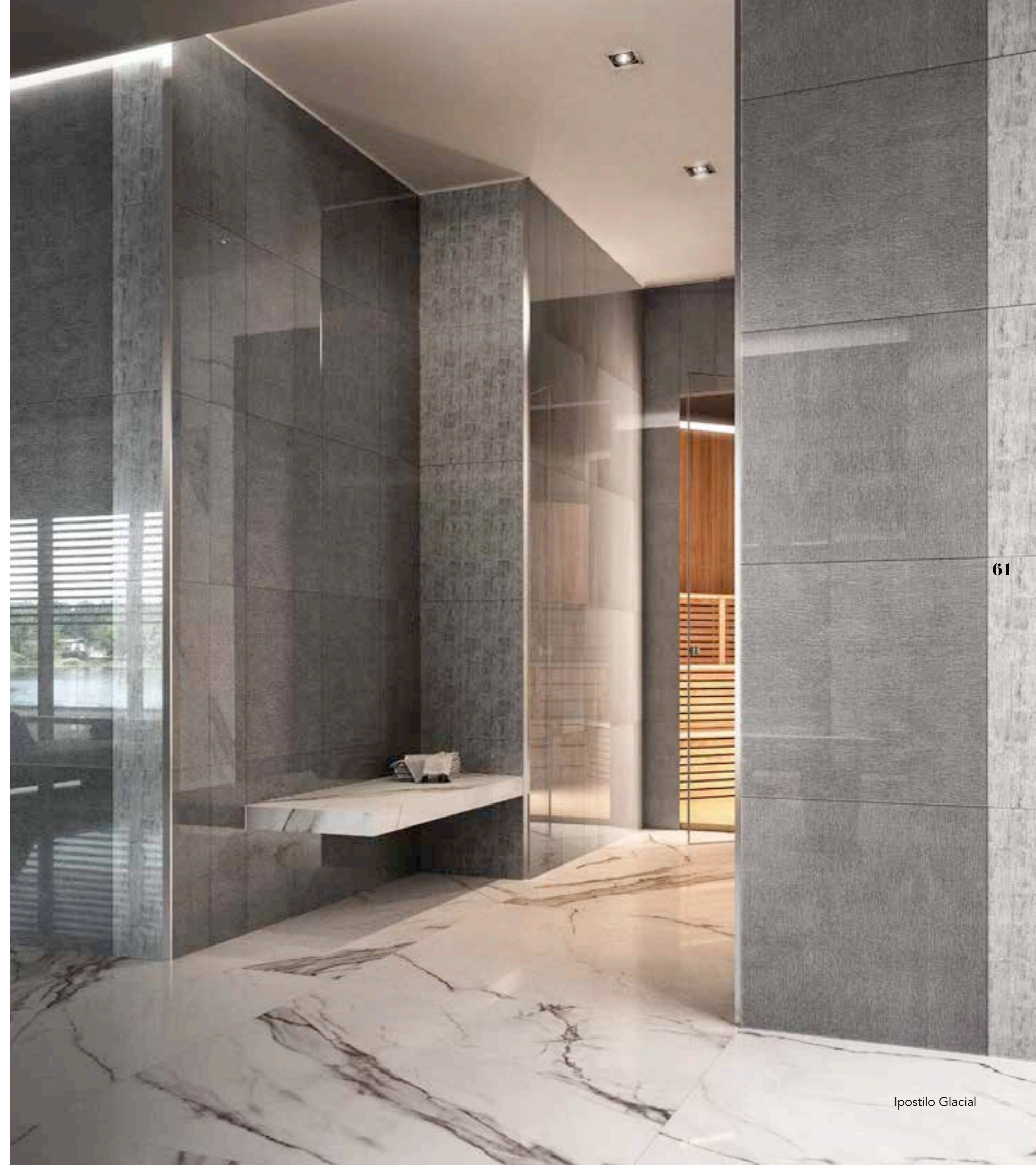
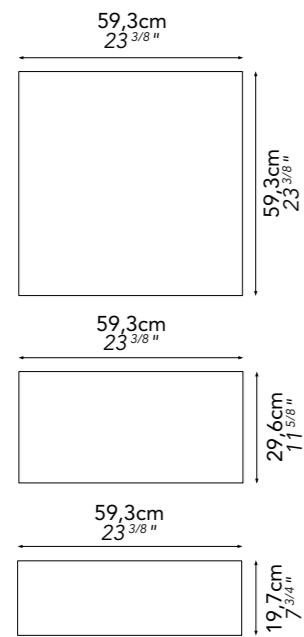


Corteza Glacial



Tela Grey

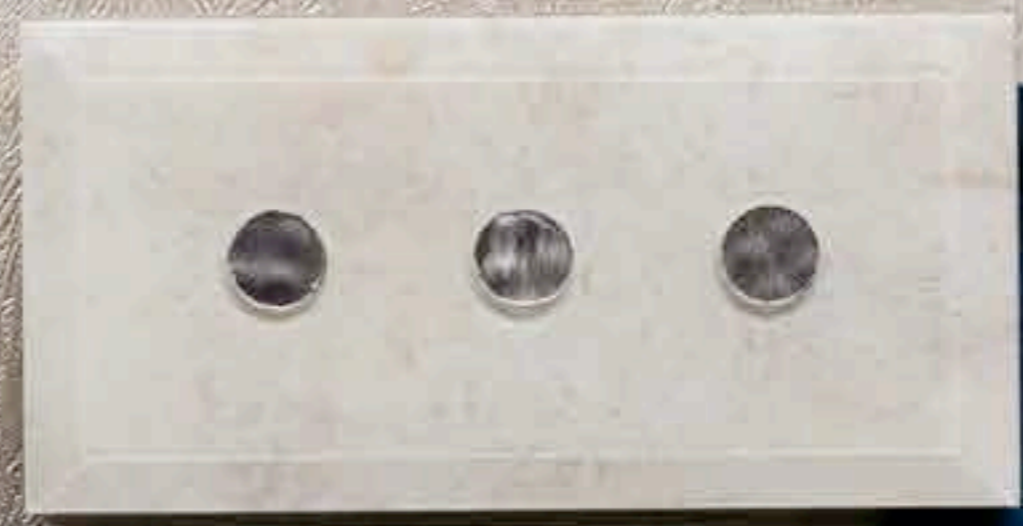
60



61



VESTIRE L'ARCHITETTURA
Dressing Architectural Elements



CLAVUM ANTIQUE

COLORI ED ELEMENTI UTILIZZATI NEL PATTERN
Colors and elements in the pattern



Antique

66



67

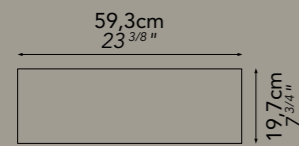
PLUTONE TAUPE

COLORI ED ELEMENTI UTILIZZATI NEL PATTERN
Colors and elements in the pattern



Plutone Taupe

68



69

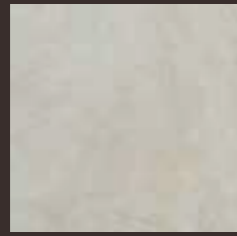


Plutone Taupe

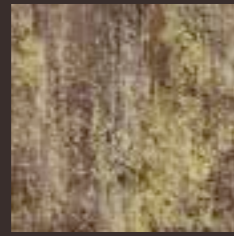


SIMATAI CREAM

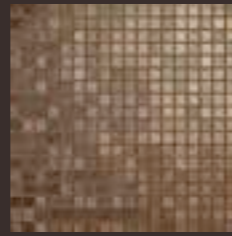
COLORI ED ELEMENTI UTILIZZATI NEL PATTERN *Colors and elements in the pattern*



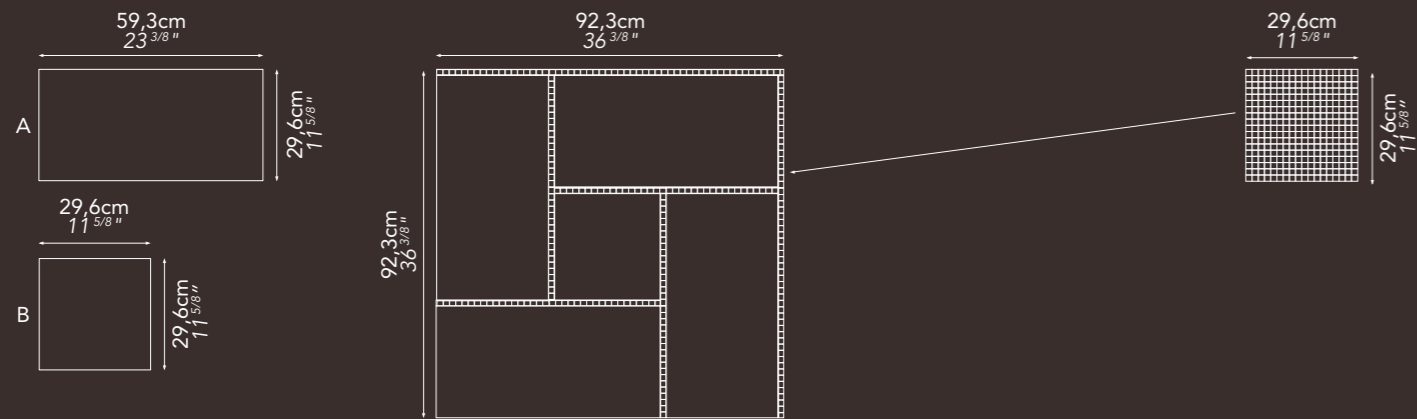
Suede Cream
A: 4PZ



Sulphur Tortora
B: 1PZ



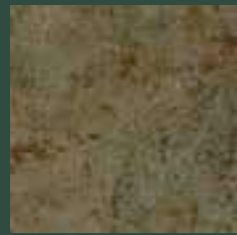
Vis Two - Mosaic





MEGALITO GREEN

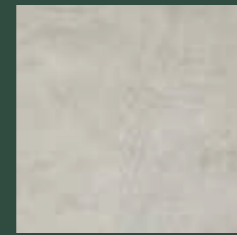
COLORI ED ELEMENTI UTILIZZATI NEL PATTERN *Colors and elements in the pattern*



Efesto Green

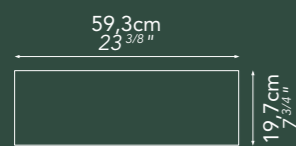
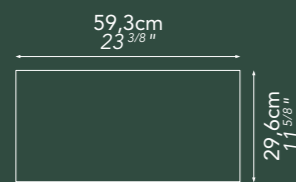
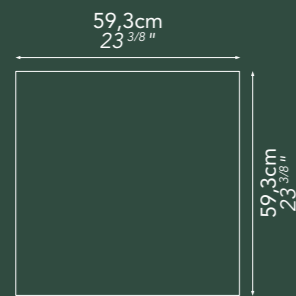


Elephant Charcoal



Suede Cream

76



SicisGrip è un trattamento in fase produttiva volta a creare una superficie antiscivolo conforme con lo standard ANSI A137.1 per DCof
SicisGrip is a treatment during production that creates a slip resistance surface and complies with the ANSI A137.1 standard for DCof



77

Megalito Green

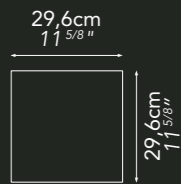
ERIS GREY

COLORI ED ELEMENTI UTILIZZATI NEL PATTERN *Colors and elements in the pattern*



Eris Grey

78

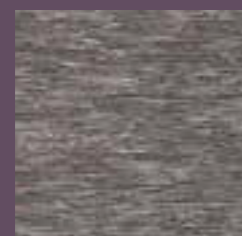


79



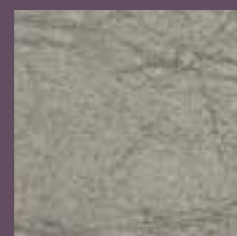
I ZMIR: TORTORA / CHARCOAL

COLORI ED ELEMENTI UTILIZZATI NEL PATTERN
Colors and elements in the pattern



Iguana Tortora

1 B: 1PZ



Elephant Tortora

1 A: 1PZ
C: 1PZ



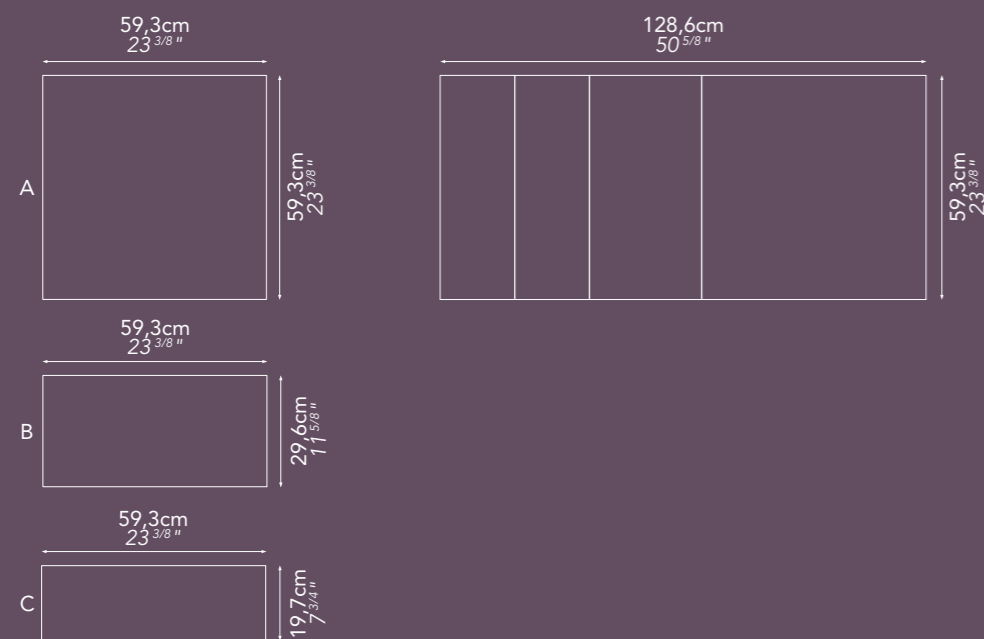
Tela Brown

1 C: 1PZ



Elephant Charcoal

2





81

85

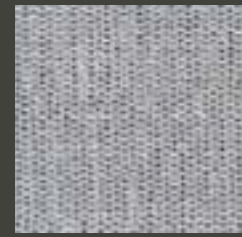
1

2

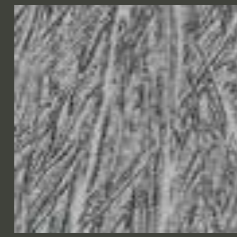
- 1 Izmir Tortora
- 2 Izmir Charcoal

MIX CYCLOPEAN

COLORI ED ELEMENTI UTILIZZATI NEL PATTERN
Colors and elements in the pattern



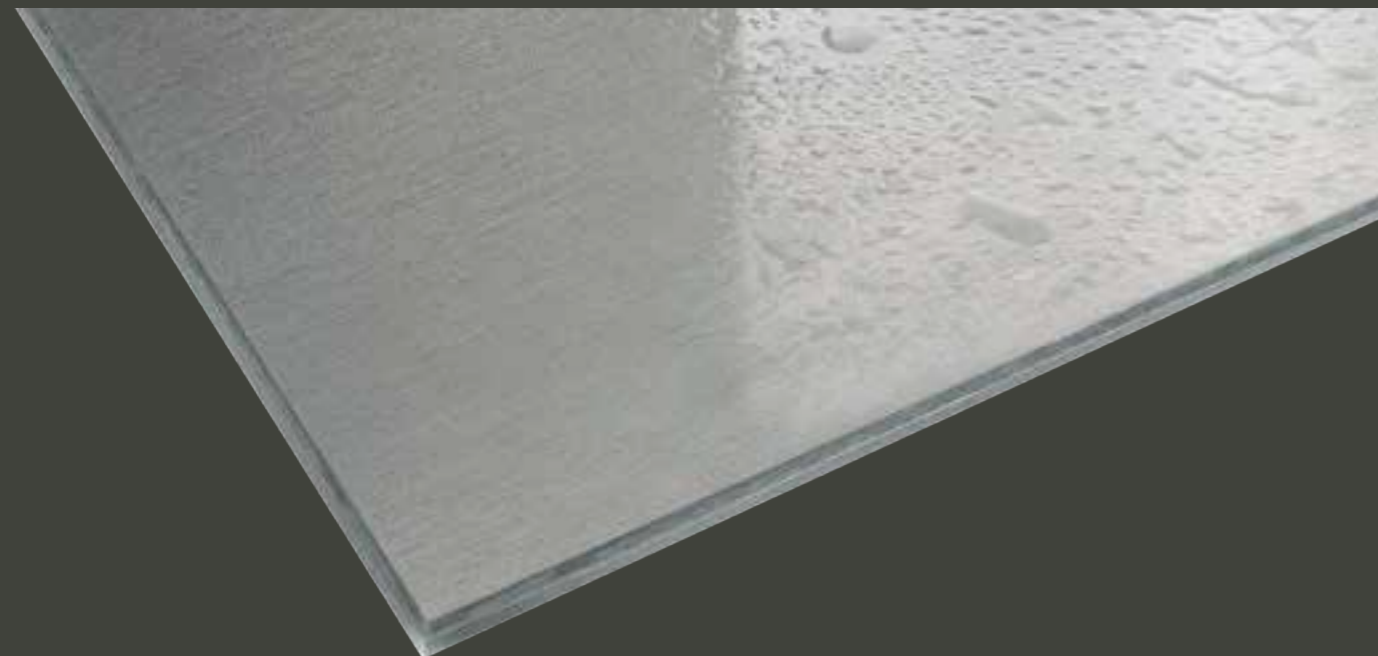
Tela Grey
50 %



Feather Grey
50 %

89cm
35"

29,6cm
11 7/8"



SicisGrip è un trattamento in fase produttiva volta a creare una superficie antiscivolo conforme con lo standard ANSI A137.1 per DCoF
SicisGrip is a treatment during production that creates a slip resistance surface and complies with the ANSI A137.1 standard for DCoF





MIX VISBY

COLORI ED ELEMENTI UTILIZZATI NEL PATTERN *Colors and elements in the pattern*



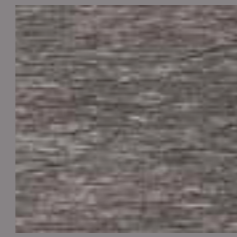
Tela Brown
25 %



Tela Grey
25 %

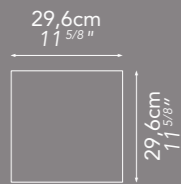


Elephant Tortora
25 %

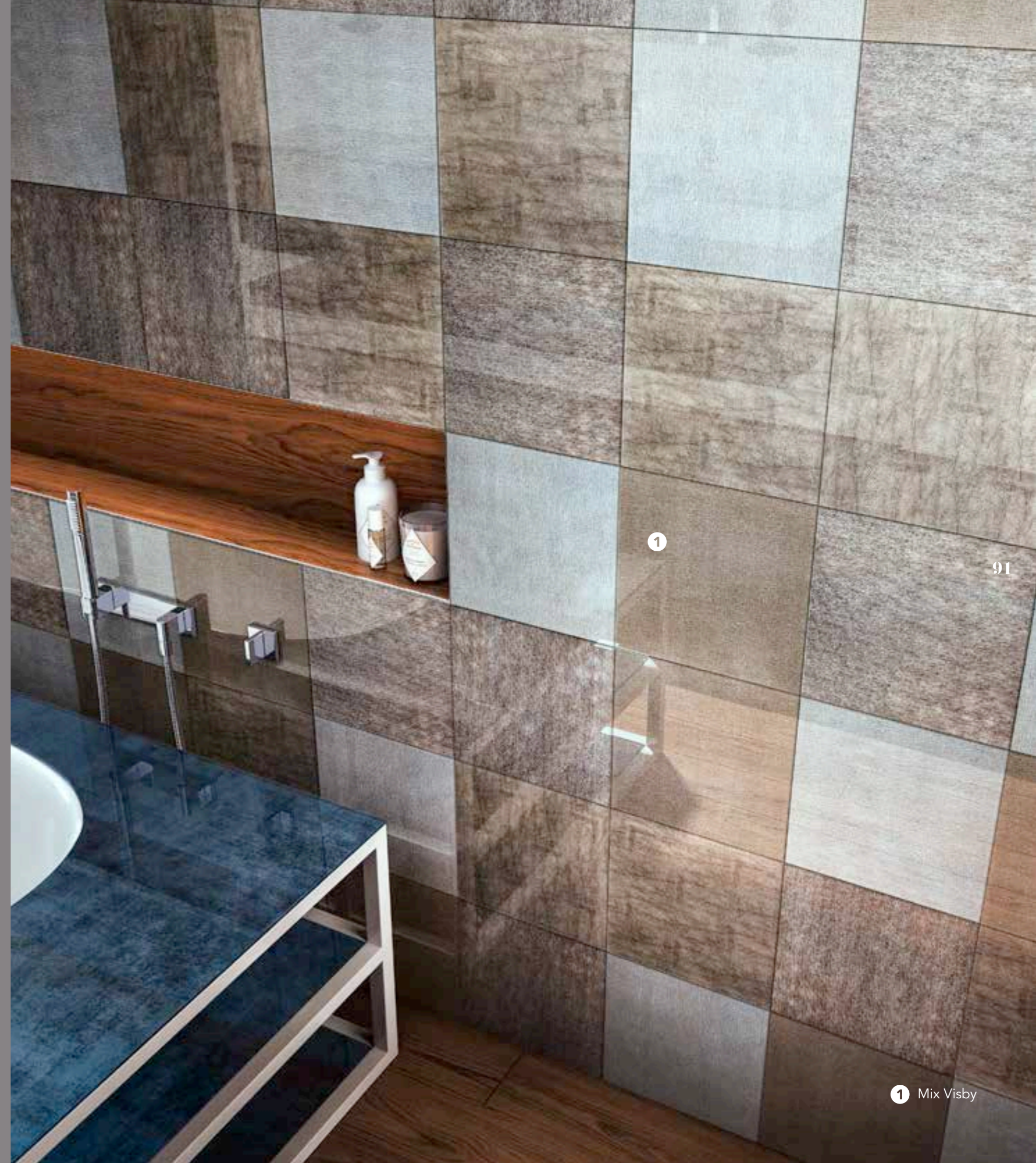
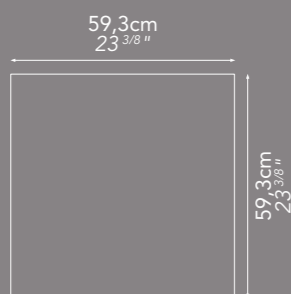


Iguana Tortora
25 %

90



PAVIMENTO Tela Grey Spessore 10mm
Floor Tela Grey Thickness 10mm



91



1

2

3

1 Mix Visby

2 Tela Brown

3 Tela Grey

92

93

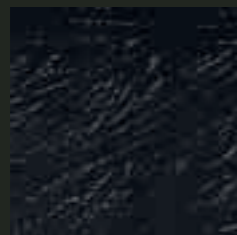
LA FORMA DELL'ACQUA

Water Forms



GONIO DARK

COLORI ED ELEMENTI UTILIZZATI NEL PATTERN *Colors and elements in the pattern*



Feather Black

1 A: 3PZ



Fuligine

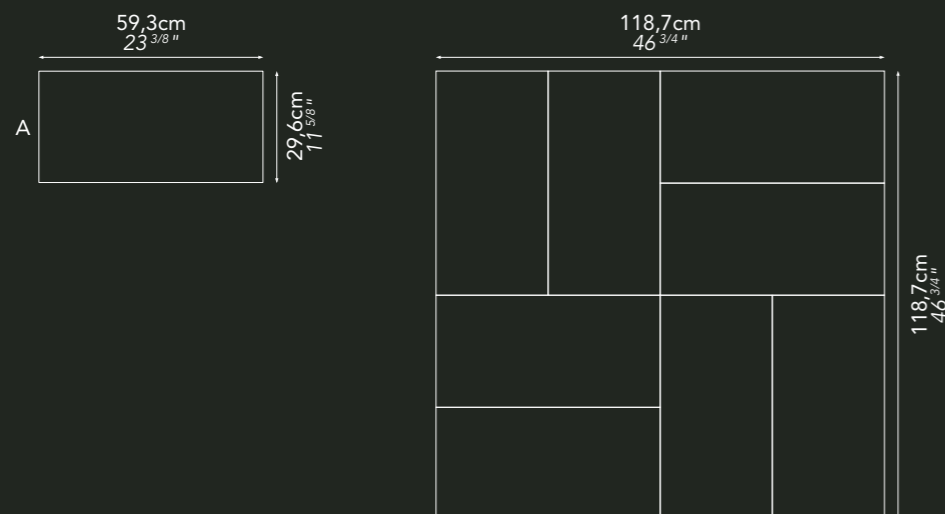
1 A: 3PZ



Tela Dark

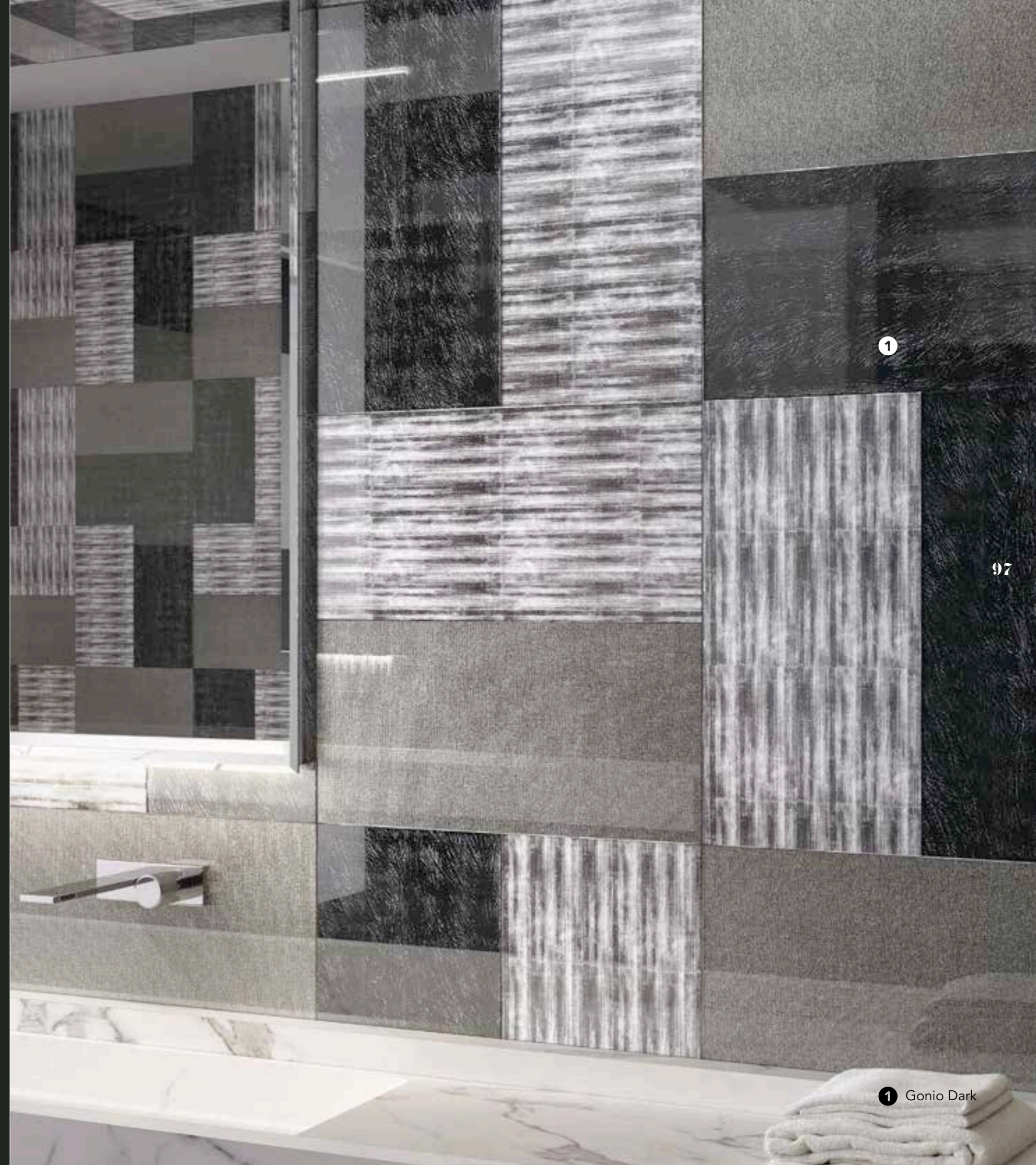
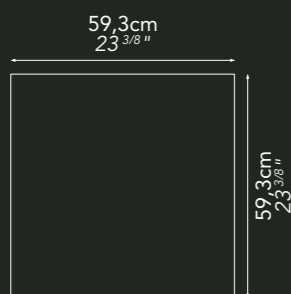
1 A: 2PZ

96



1 Gonio Dark

2 Tela Dark



97

1 Gonio Dark



2

1

1 Gonio Dark
2 Tela Dark

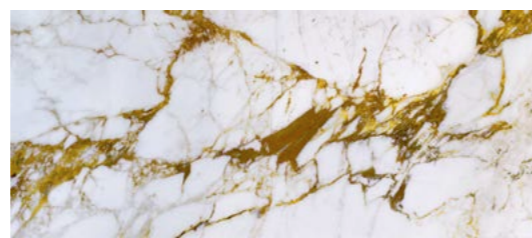
OBIDOS GLACIAL

COLORIED ELEMENTI UTILIZZATI NEL PATTERN *Colors and elements in the pattern*



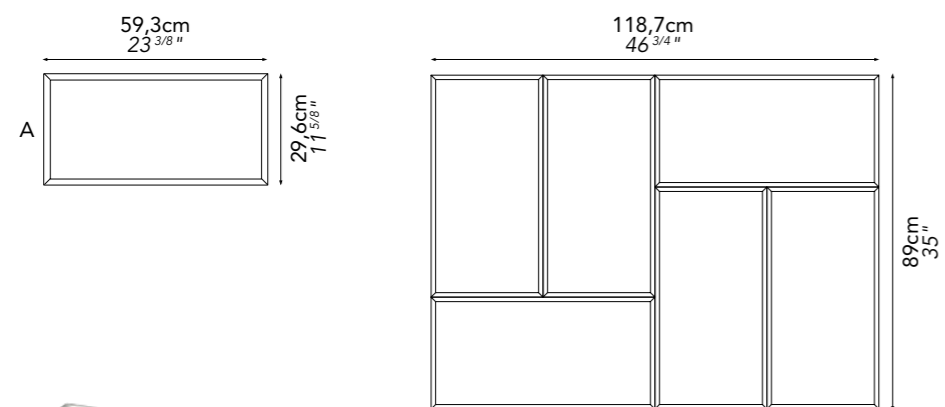
Canapa Sutra Glacial

A: 6PZ

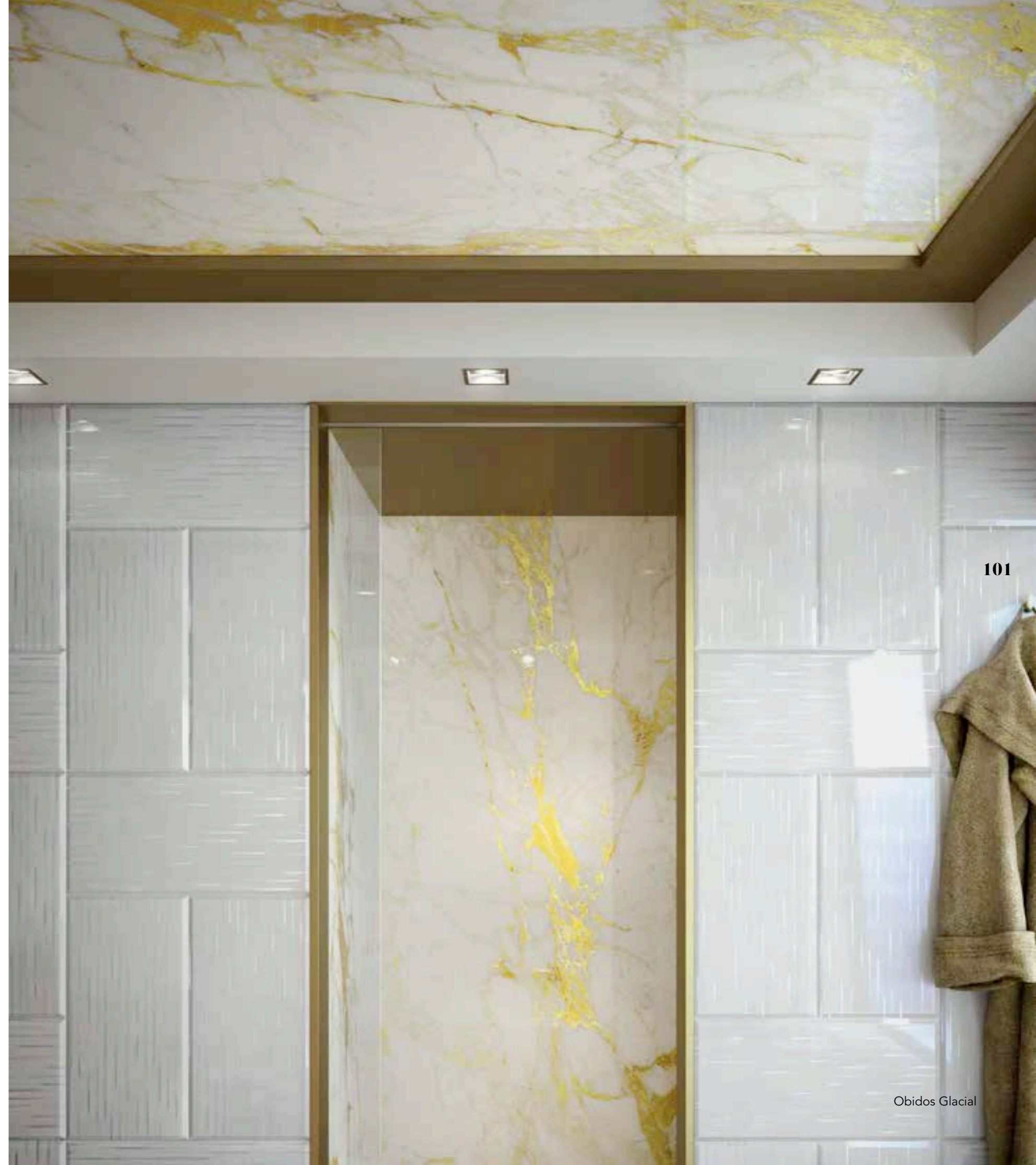


Vetrite Marble Cal Gold

100



101





MIX BADALING

COLORI ED ELEMENTI UTILIZZATI NEL PATTERN *Colors and elements in the pattern*



Antique
33,3 %



Plutone Taupe
33,3 %



Tela Grey
33,3 %

104

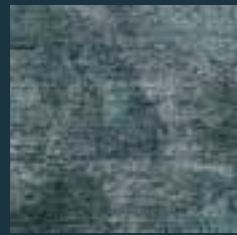


105



MIX TALLIN

COLORI ED ELEMENTI UTILIZZATI NEL PATTERN *Colors and elements in the pattern*



Peltro Mud

1 A: 33,3 %



Elephant Charcoal

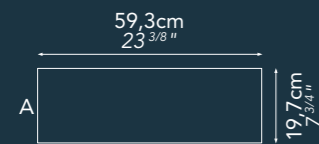
1 A: 33,3 %



Tela Dark

1 A: 33,3 %

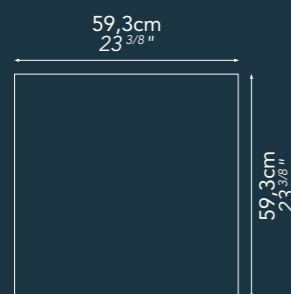
106



1 Mix Tallin

2 Tela Dark

PAVIMENTO Tela Dark Spessore 10mm
Floor Tela Dark Thickness 10mm



107

1 Mix Tallin

2 Tela Dark



1

2

- 1 Mix Tallin
- 2 Tela Dark

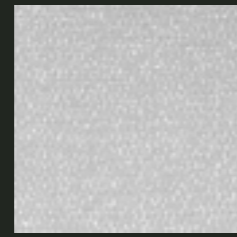
TULUM: NUDE / ELEPHANT CHARCOAL

COLORI ED ELEMENTI UTILIZZATI NEL PATTERN
Colors and elements in the pattern



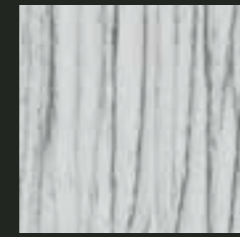
Elephant Tortora

1 A: 1PZ
B: 1PZ



Tela White

1 A: 2PZ
B: 1PZ



Timber Glacial

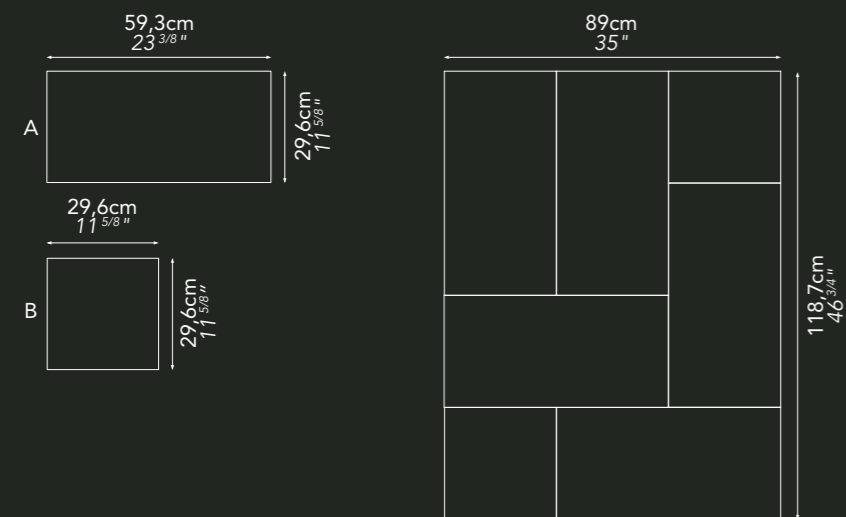
1 A: 2PZ



Elephant Charcoal

2

110



111





112

113

2

1

- 1 Tulum Nude
- 2 Tulum Elephant Charcoal



2

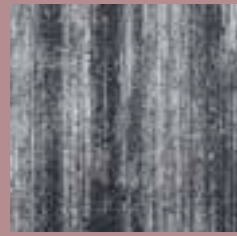


1

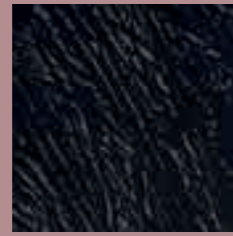
- 1 Tulum Nude
- 2 Tulum Elephant Charcoal

FULIGGINE

COLORI ED ELEMENTI UTILIZZATI NEL PATTERN *Colors and elements in the pattern*

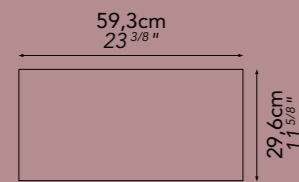


Fuliggine

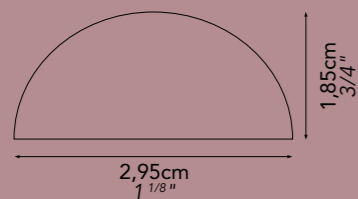


Feather Black

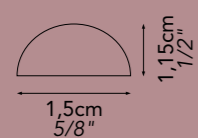
116



MOULDING MICENEA



MOULDING ROMANICA



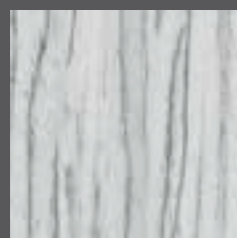
117



Fuliggine
Feather Black
Moulding Micenea
Moulding Romanica

ÁVILA: WHITE / TIMBER GLACIAL

COLORI ED ELEMENTI UTILIZZATI NEL PATTERN *Colors and elements in the pattern*



Timber Glacial

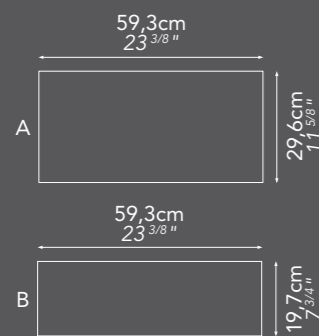
1 B: 1PZ



Tela White

1 A: 1PZ

118



119

- 1 Ávila White
- 2 Ávila Timber Glacial



120

121

1

2

- 1 Ávila White
- 2 Ávila Timber Glacial

TIMBER GLACIAL

COLORIED ELEMENTI UTILIZZATI NEL PATTERN *Colors and elements in the pattern*

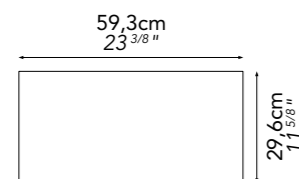


Timber Glacial



Bordure
Pergamino Grey

122



123

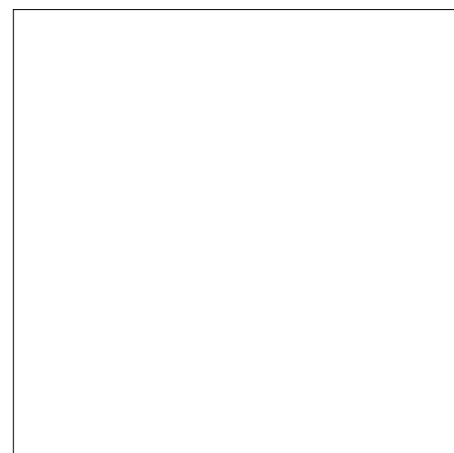


GAMMA COLORI

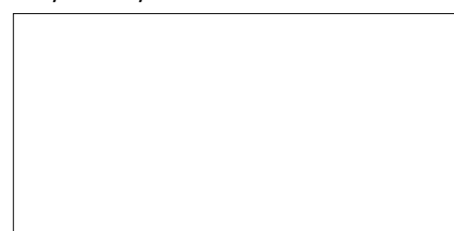
Key Colors

Satinatura disponibile su richiesta su tutta la gamma dei colori della Vetrice Tile con spessore 6 / 10 mm.
 I toni dei campioni sono da considerarsi indicativi.
Satin finish available on demand for the whole range of Vetrice Tile colors with thickness of 6 & 10 mm
Sample colours are considered indicative.

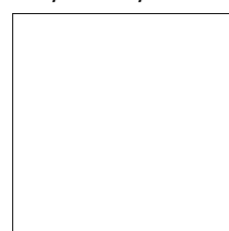
59,3x59,3cm / 23^{3/8}"x23^{3/8}"



29,6x59,3cm / 11^{5/8}"x23^{3/8}"



29,6x29,6cm / 11^{5/8}"x11^{5/8}"



19,7x59,3cm / 7^{3/4}"x23^{3/8}"



19,7x9,8cm / 7^{3/4}"x3^{7/8}"



29,6x89cm / 11^{5/8}"x35"



Elephant Panna

Corteza Glacial

Canapa Sutra Glacial

Timber Glacial

Antique

Tela White

Pergamino Grey

Eris Grey

Feather Grey

Tela Dark

Suede Cream

Tela Grey

Plutone Taupe

Iguana Tortora

Fuliggine

Feather Cipria

Elephant Tortora

Tela Brown

Peltro Mud

Antique Blu

Sulphur Tortora

Efesto Green

Boheme Grey

Elephant Charcoal

Feather Black

FINITURE Finishes

Satinatura disponibile su richiesta su tutta la gamma dei colori della Vetrite Tile con spessore 6 / 10 mm.
Satin finish available on demand for the whole range of Vetrite Tile colors with thickness of 6 & 10 mm

126

1 TELA GREY SATIN

2 TELA GREY

1 PELTRO MUD SATIN

2 PELTRO MUD

1 SUEDE CREAM SATIN

127

2 SUEDE CREAM

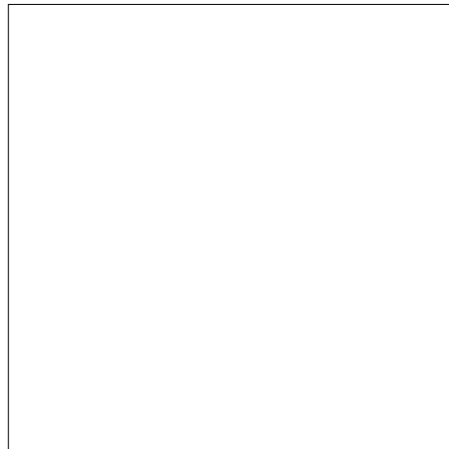
2 PERGAMINO GREY

1 PERGAMINO GREY SATIN

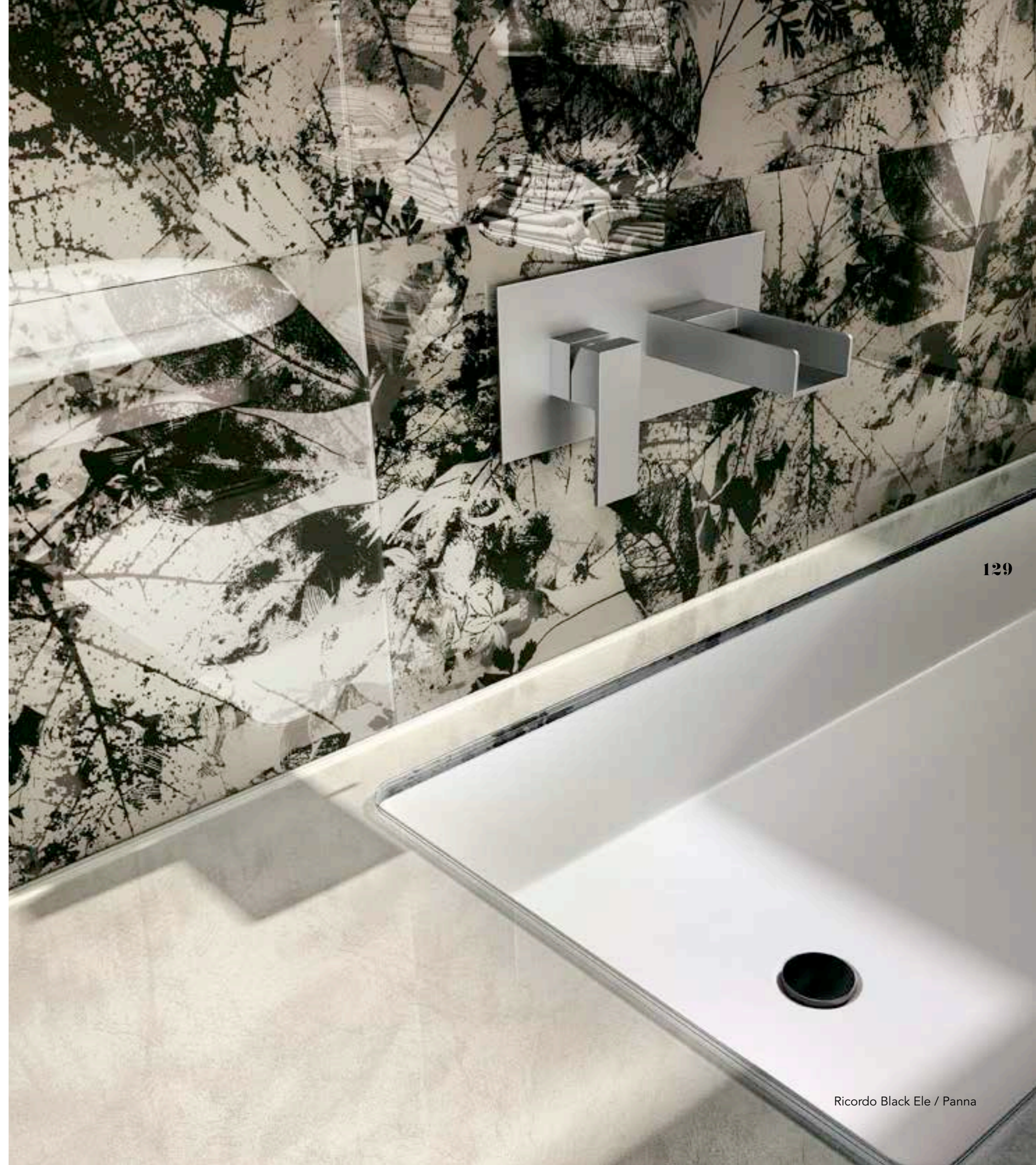
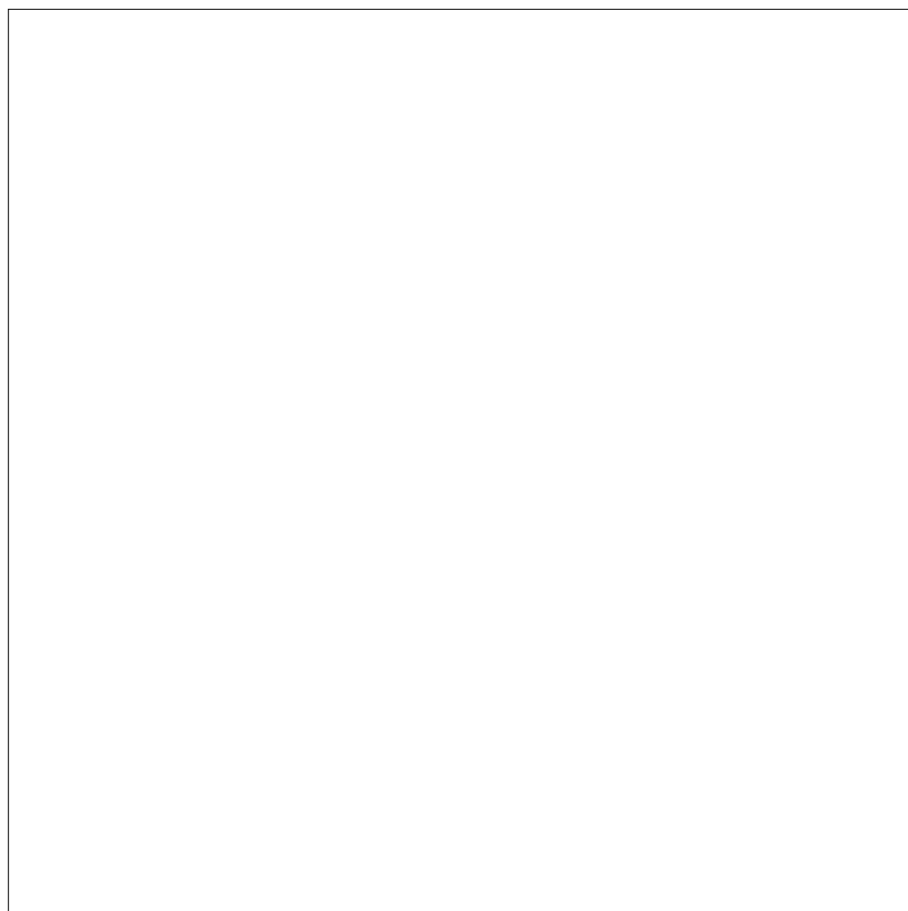
DECORATI *Decorated*

I toni dei campioni sono da considerarsi indicativi.
Sample colours are considered indicative.

59,3x59,3cm / 23^{3/8}"x23^{3/8}"

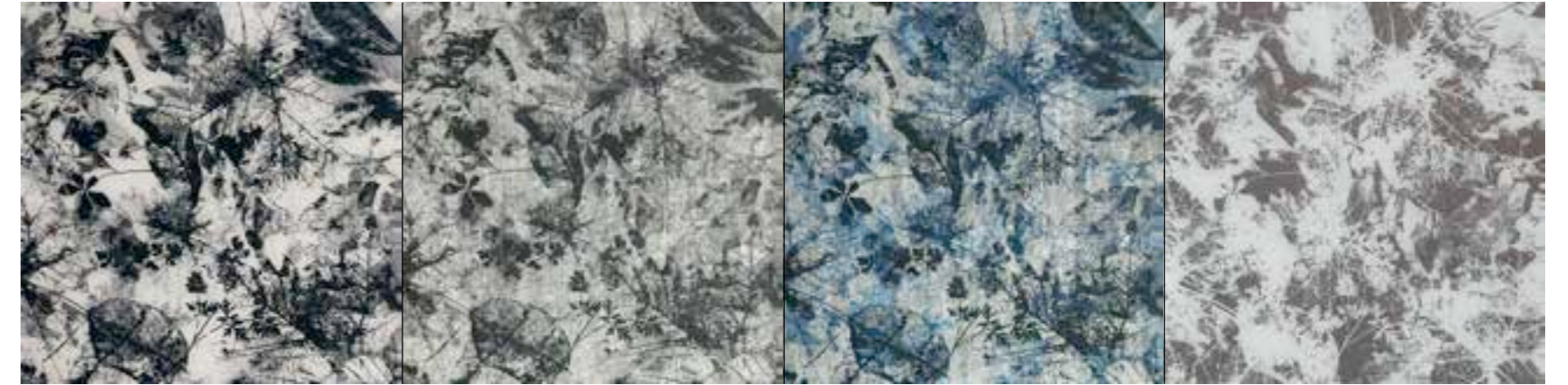


120 x120cm / 47^{1/4}"x47^{1/4}"





I toni dei campioni sono da considerarsi indicativi.
Sample colours are considered indicative.



Ricordo Black Ele / Panna

Ricordo Black Per / Grey

Ricordo Blu Per / Grey

Ricordo White Ele / Torotra



Bucolico Black Bo / Grey

Bucolico Black Tela / Grey

Bucolico White Per / Grey

Bucolico Black As / Cham



Atlas Black Per / Grey

Atlas Seppia Per / Gold

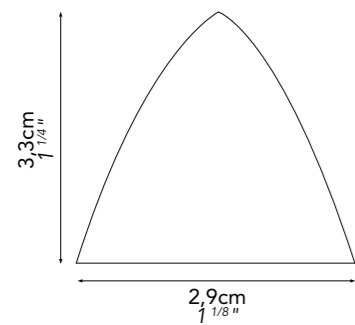
LISTELLI Mouldings



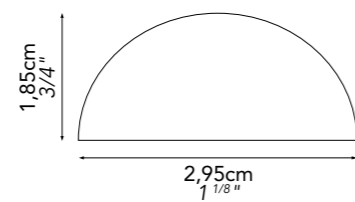
132

Lunghezza 70 cm
Length 27 1/2"

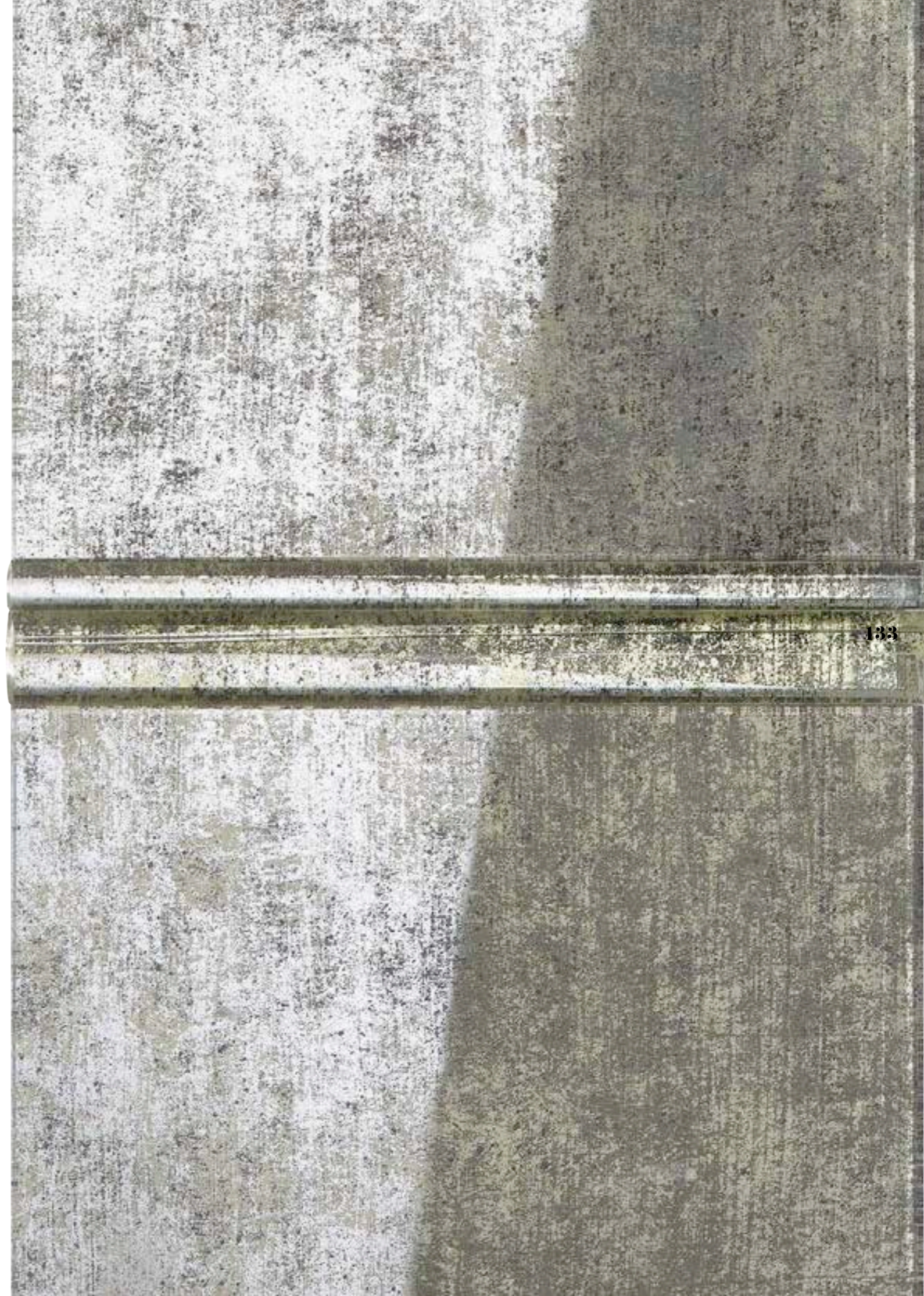
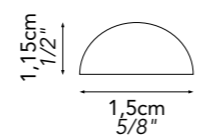
SUMERICA



MICENEA



ROMANICA

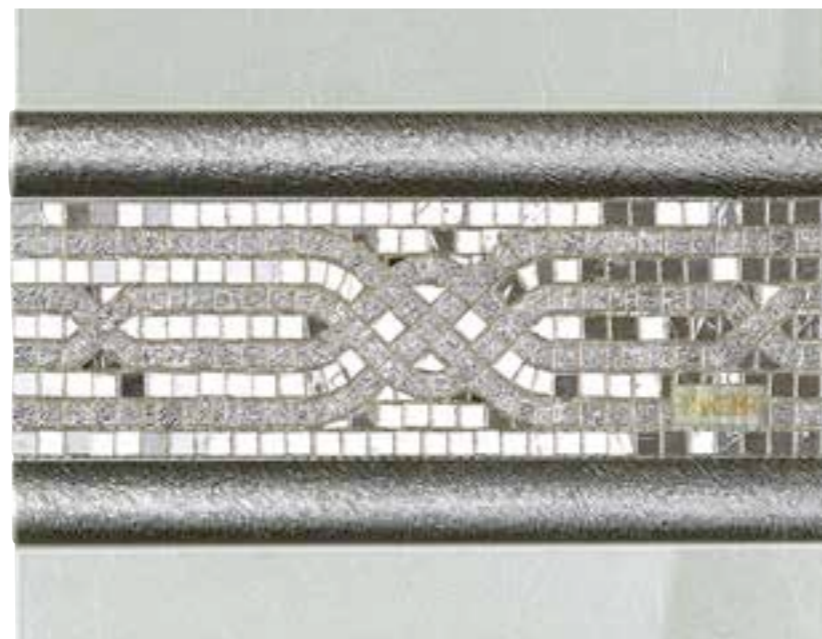


133

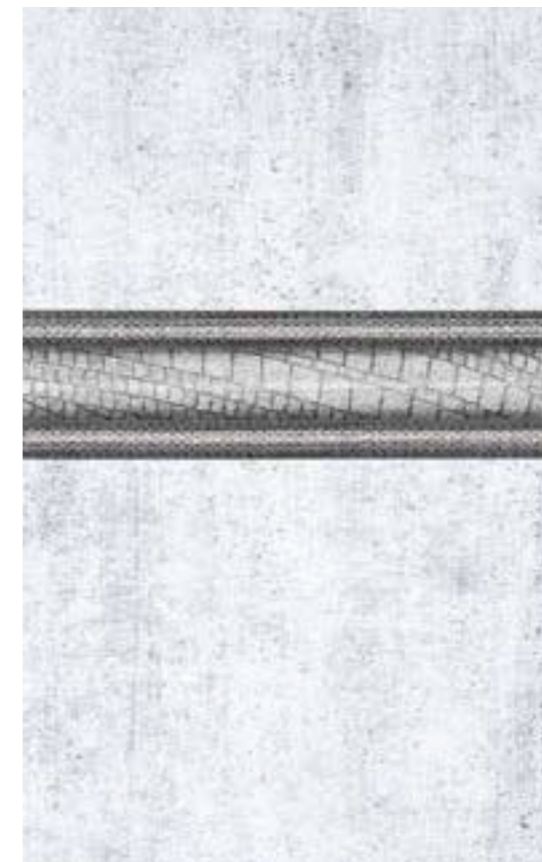
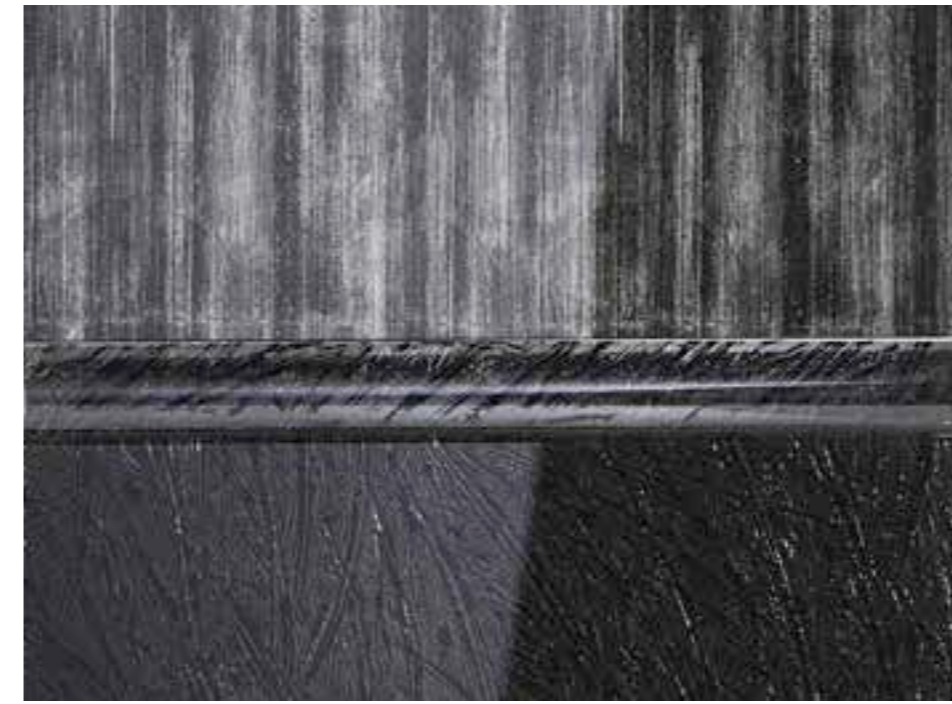
P

ROPOSTE ABBINAMENTI
Matching Proposals

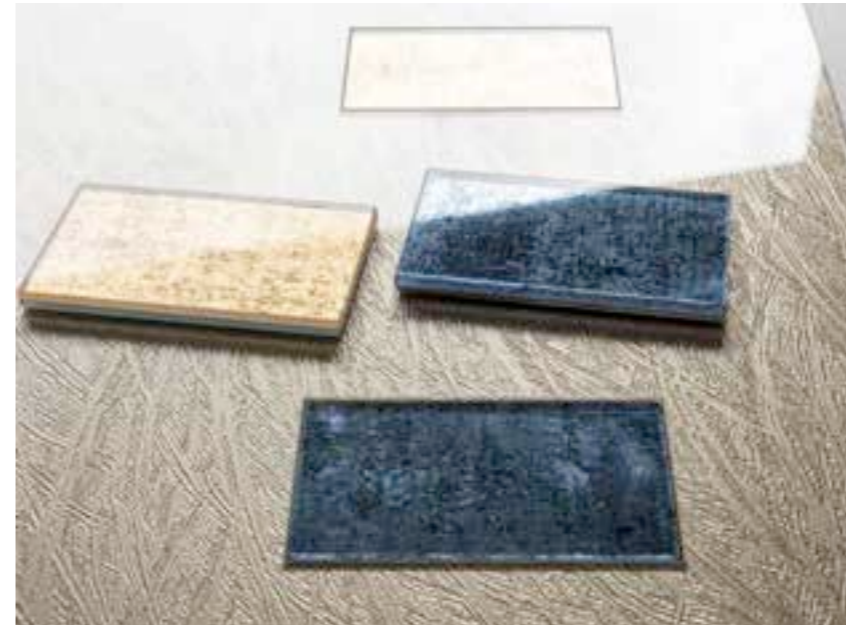
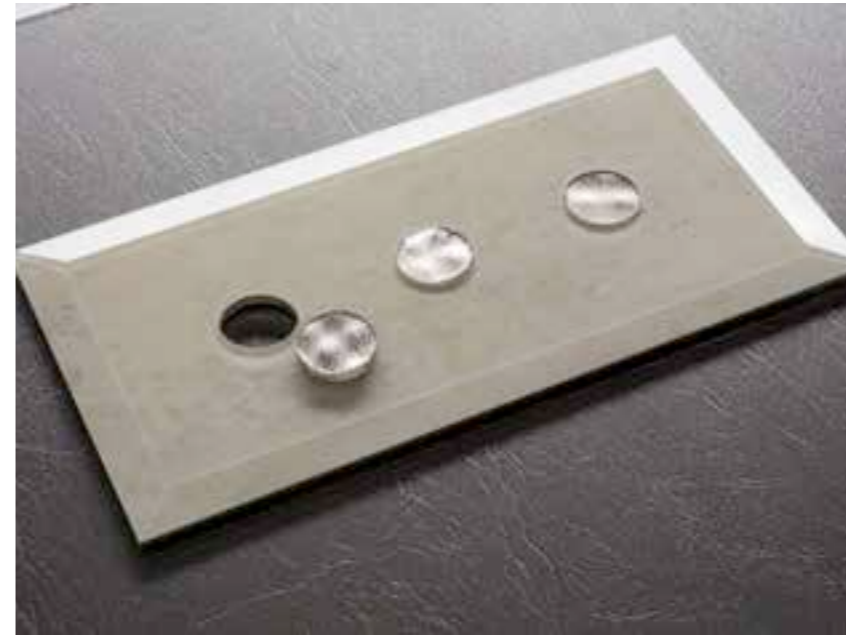
134

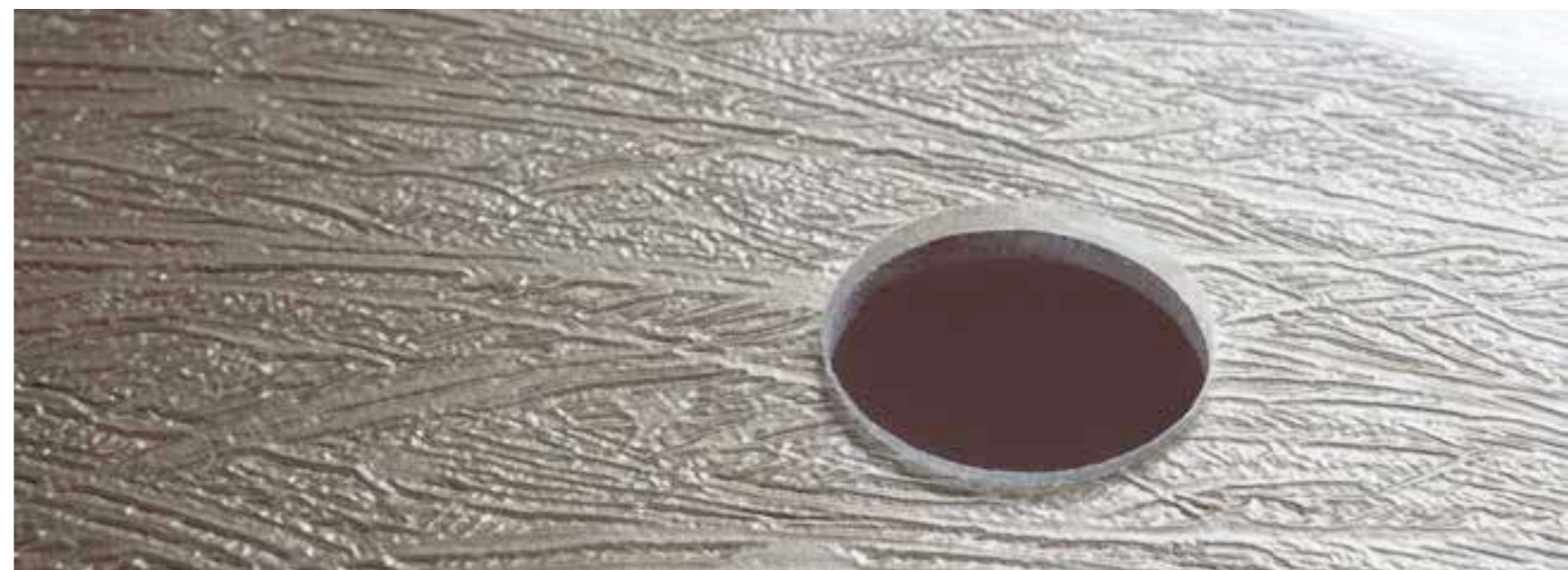


135



APPICAZIONI / UTILIZZI *Applications / Usages*





L

INDICE PATTERN

Pattern Index

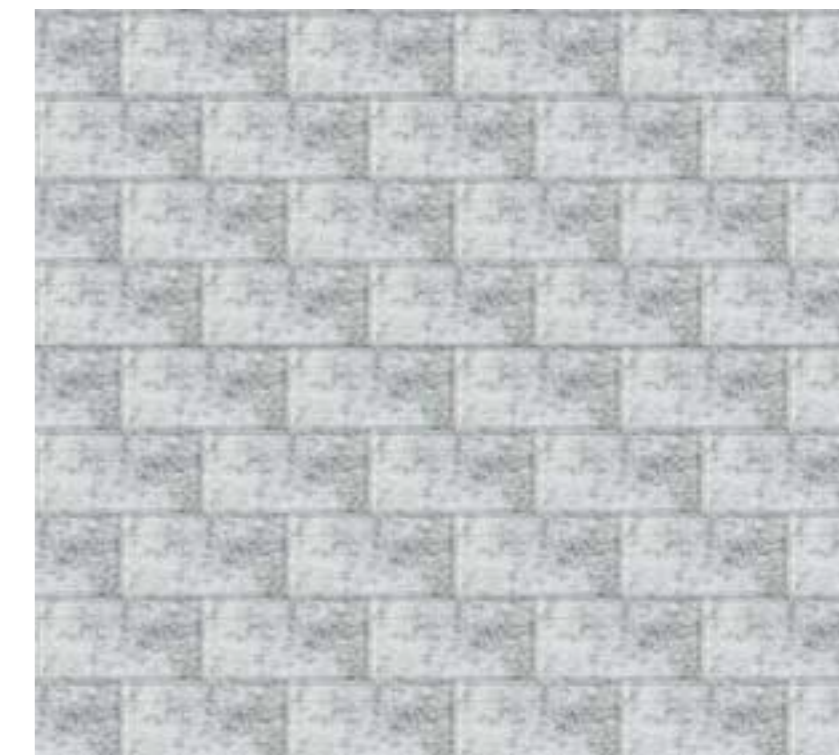
I toni dei campioni sono da considerarsi indicativi.
Sample colours are considered indicative.

Camelot Classic pag 54



Tela White / Corteza Glacial / Feather Black / Fuliggine

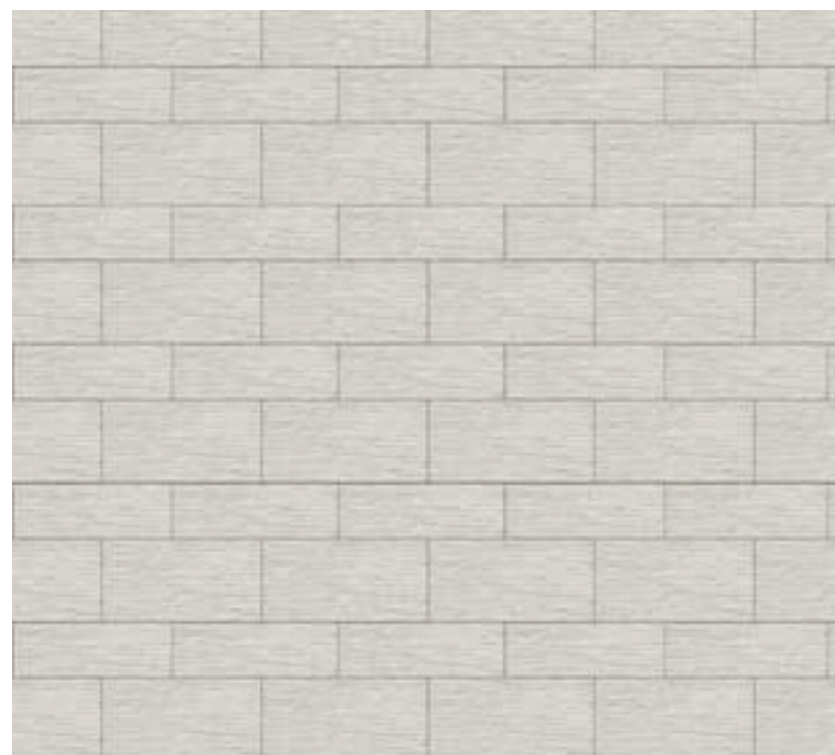
Clavum Antique pag 58



Antique 29,6x59,3 / 11¹/₂"x23³/₈"

140

Ávila Timber Glacial pag 118



Timber Glacial

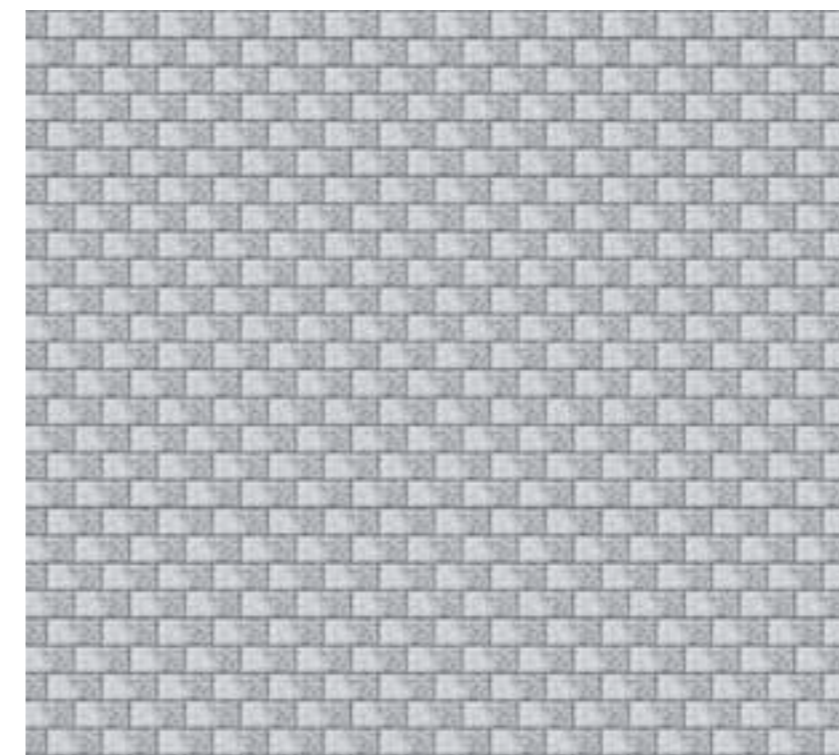
Ávila White pag 118



Timber Glacial / Tela White

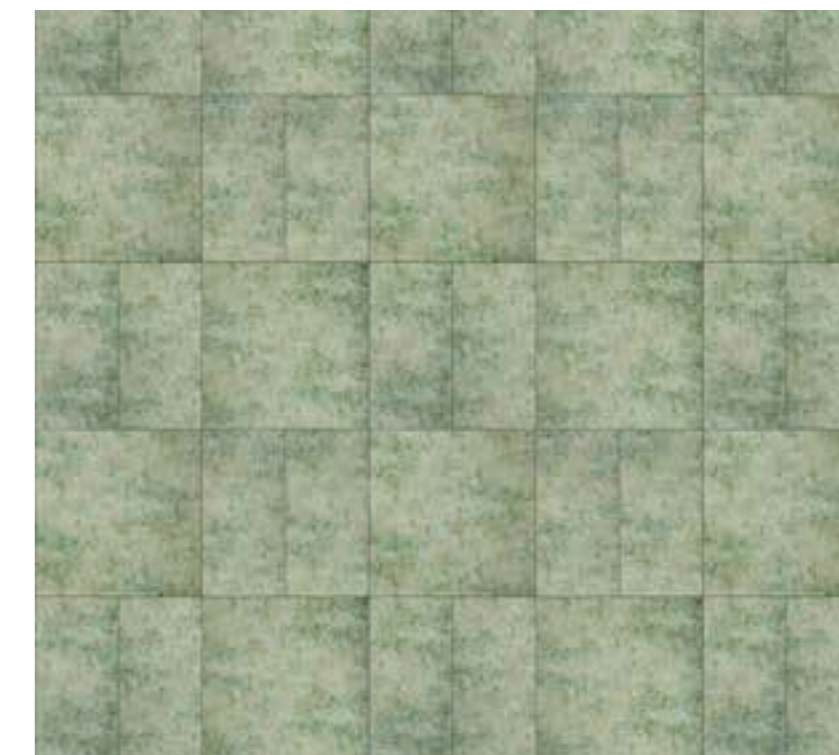
141

Clavum Antique pag 66



Antique 19,7x9,8 / 7¹/₂"x3³/₄"

Copán Efesto Green pag 50



Efesto Green

Gonio Dark pag 96



Feather Black / Fuliggine / Tela Dark

Ipostilo Glacial pag 60



Elephant Panna / Corteza Glacial / Tela Grey

Kelasuri Tortora pag 40



Elephant Tortora / Sulphur Tortora / Feather Cipria

Lhasa Glacial pag 46



Corteza Glacial / Antique

Izmir Charcoal pag 82



Iguana Tortora / Tela Brown / Elephant Charcoal

Izmir Tortora pag 82



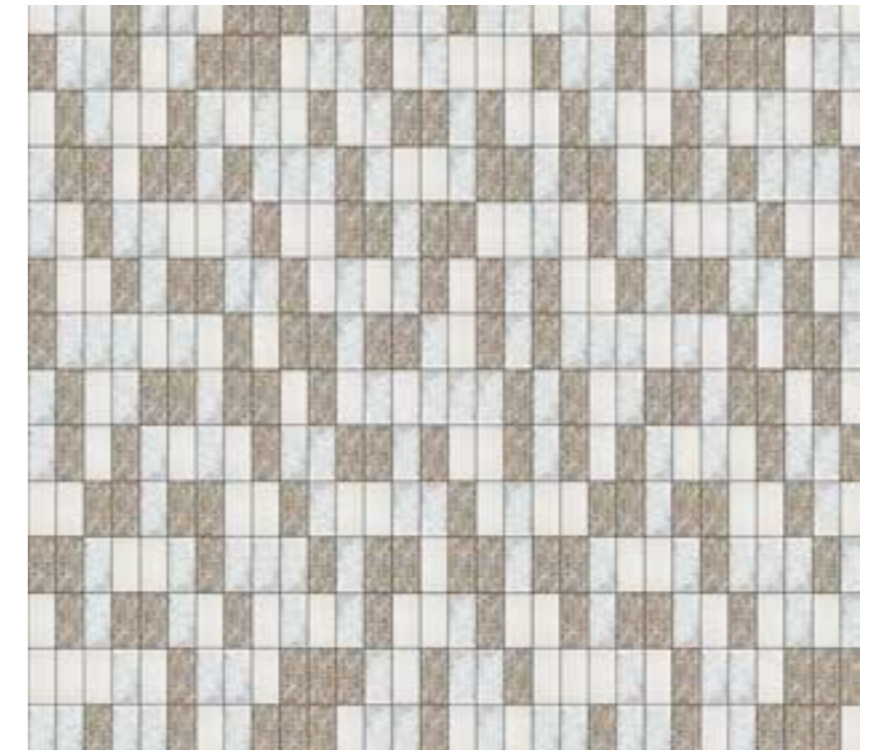
Iguana Tortora / Elephant Tortora / Tela Brown / Elephant Charcoal

Megalito Green pag 76



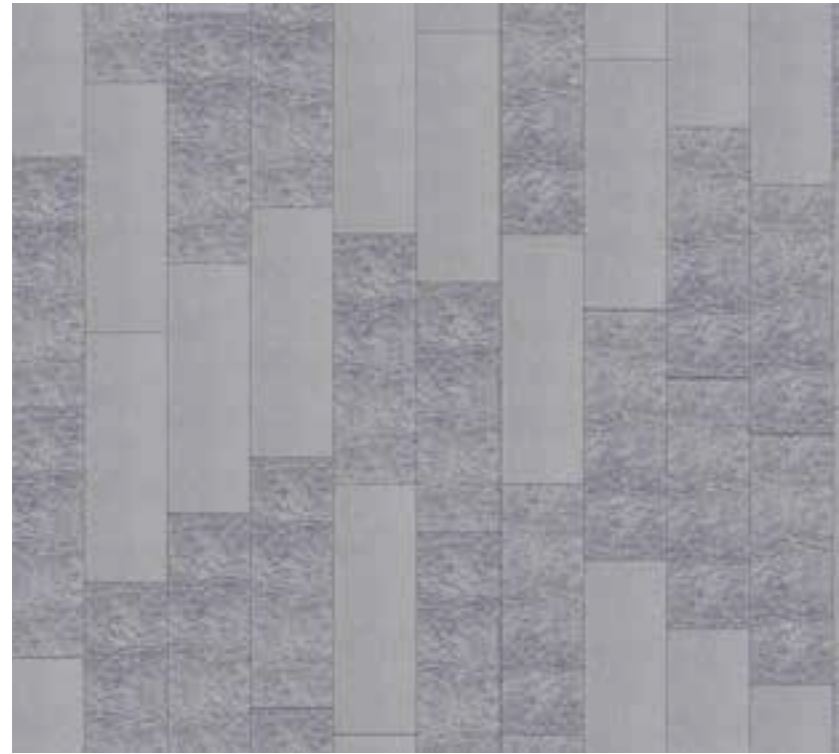
Efesto Green / Elephant Charcoal / Suede Cream

Mix Badaling pag 104



Antique / Plutone Taupe / Tela Grey

Mix Cyclopean pag 86



Tela Grey / Feather Grey

Mix Tallin pag 106



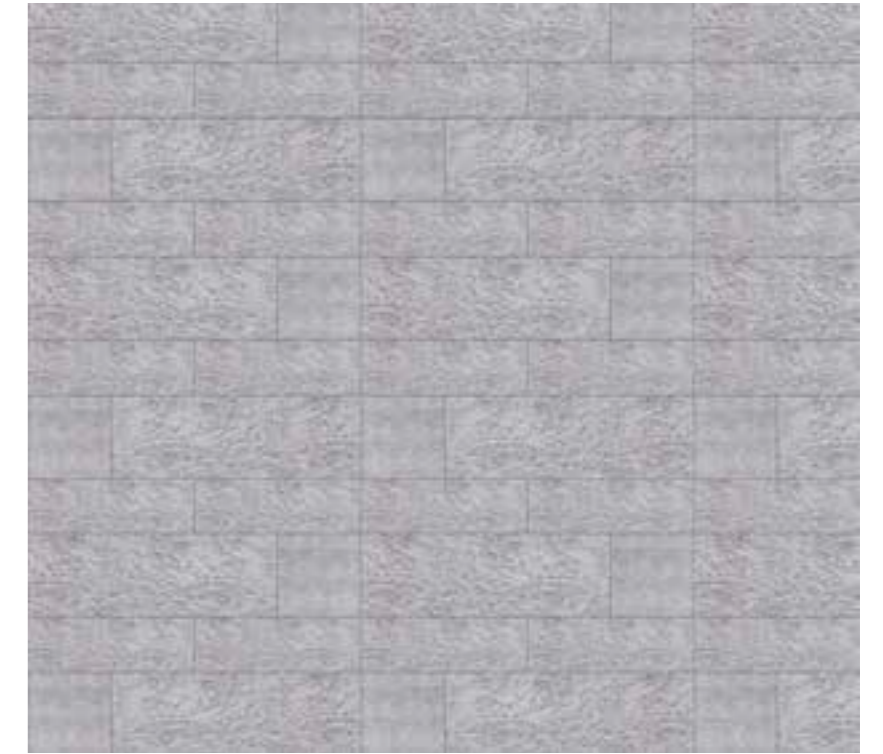
Peltro Mud / Elephant Charcoal / Tela Dark

Pisac Tobacco pag 14



Boheme Grey / Feather Grey / Feather Cipria

Pisac Feather Grey pag 14



Feather Grey

Mix Visby pag 90



Tela Brown / Tela Grey / Elephant Tortora / Iguana Tortora

Obidos Glacial pag 100



Canapa Sutra Glacial

Simatai Cream pag 72



Suede Cream / Sulphur Tortora / Vis Two Mosaic

Tipón Tortora pag 26



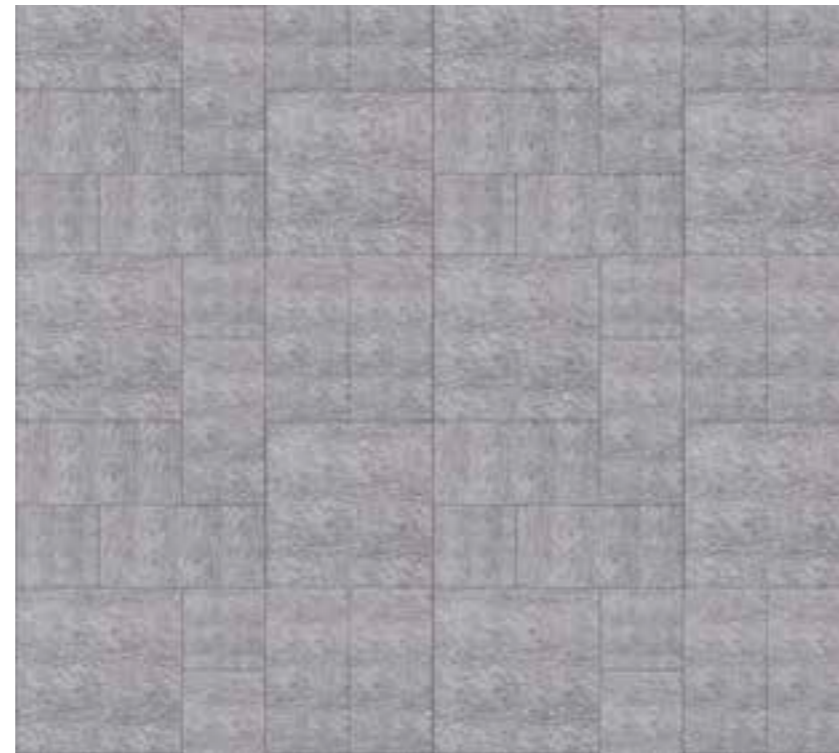
Feather Cipria / Elephant Charcoal / Suede Cream / Sulphur Tortora

Tipón Feather Cipria pag 26



Feather Cipria

Troy Feather Grey pag 22



Feather Grey

Tulum Nude pag 110



Elephant Tortora / Tela White / Timber Glacial

Tulum Elephant Charcoal pag 110



Elephant Charcoal

Troy Peltro Mud pag 22



Peltro Mud

Troy Tela White pag 22



Tela White

Ugarit Antique Blue pag 36



Antique Blue

CARATTERISTICHE TECNICHE

Technical Characteristics

DESCRIZIONE TECNICA DI VETRITE TILE

Vetro tecnico decorativo, ottenuto mediante la combinazione di polimeri in fase liquida, lamine metalliche e fibre tessili. Vetro composito versatile ad elevata tecnologia in grado di soddisfare i requisiti estetici, tecnici e ambientali più ambiziosi. Spessori 6 mm - su richiesta per applicazioni speciali può variare da 4 a 12 mm. Per uso a pavimento si consiglia lo spessore da 10 mm. con finitura SICISgrip*.

TECHNICAL DESCRIPTION OF VETRITE TILE

Thin glass slabs in large format made with an array of polymer films, thermofoil, metal foils or fiber textiles. Highly technical characteristics allowing for a multitude of applications. Thickness 6 mm – for special applications thickness from 4 to 12mm can also be available.

148 *For floor applications we suggest 10 mm thick with SICISgrip* treatment.*

VETRITE TILE E AMBIENTE

La versatilità della tecnologia Vetrite Tile consente, su richiesta, di fornire il prodotto anche partendo da vetri speciali pretrattati quali autopulenti, antibatterici etc...

I vetri speciali a pulizia facilitata sono caratterizzati da uno strato sottile e trasparente che ha proprietà fotocatalitiche e idrofile molto efficaci nel mantenere pulita la superficie. Lo strato fotocatalitico utilizza la doppia azione dei raggi UV della luce solare e dell'acqua per rimuovere lo sporco che si accumula sulla superficie del vetro.

VETRITE TILE AND ENVIRONMENT

On request, Vetrite Tile can be produced pretreated with a self-cleaning and antibacterial surface. This easy to clean treatment is characterized by a thin, transparent layer that has hydrophilic and photocatalytic properties which are very effective in maintaining a clean surface. The photocatalytic layer uses double action from UV rays from the sun and water to remove dirt that accumulates on the glass surface.

VALUTAZIONE DELLA QUALITÀ

Metodi di ispezione
Vetrite Tile deve essere osservata in una posizione verticale, ad occhio nudo e in normali condizioni di luce diffusa (naturale o artificiale, tra 300 lx e 600 lx), da una distanza di 1 m.
La direzione di osservazione è normale, cioè perpendicolarmente, alla lastra di vetro. L'uso di una fonte di illuminazione aggiuntiva, ad esempio riflettori, non è permesso.

QUALITY EVALUATION

*Handling and Inspection
Vetrite Tile shall be inspected in a vertical position, with the naked eye and under normal diffused lighting conditions such as daylight (between 300lx and 600lx) from a distance of 1 m.
The use of additional lighting sources and/or spotlights is not acceptable.*

FISSAGGIO DI VETRITE TILE - RIFERIRSI AL MANUALE DI POSA

L'installazione e la pulizia di Vetrite Tile devono essere idonei all'ambiente di destinazione. Vetrite Tile può essere danneggiato, questo dipenderà in larga misura dall'ambiente in cui viene utilizzato. Devono sempre essere considerate le seguenti raccomandazioni:
- I materiali di fissaggio utilizzati non devono essere di natura aggressiva.
- Quando Vetrite Tile viene inserito in profili, i bordi possono essere danneggiati da condensazione, agenti chimici (detergenti, ecc) che possono rimanere all'interno del profilo.
- La superficie e la massa del materiale del substrato a cui Vetrite Tile è fissato deve essere pulito, asciutto, privo di umidità, acidi, alcali e altri materiali aggressivi.
- Le istruzioni del produttore di adesivi, devono essere sempre seguite.
- Tutti gli adesivi e prodotti utilizzati devono essere compatibili con Vetrite Tile.
- La selezione e l'applicazione di adesivi/prodotti chimici, insieme con la scelta del substrato e preparazione per il fissaggio Vetrite Tile, è esclusivamente a discrezione e responsabilità dell'installatore.
- La selezione del detergente per la pulizia di Vetrite Tile, in base alla destinazione d'uso, è esclusivamente a discrezione e responsabilità dell'installatore.
- Sisis è disponibile ad assistere e suggerire gli installatori.

INSTALLATION OF VETRITE TILE - REFER TO THE INSTALLATION MANUAL

*General recommendations:
- Vetrite Tile should be used in suitable environments and should be cleaned and maintained per suggestions.
- Vetrite Tile material should be handled with care.
- The Vetrite Tile should be clean, dry, free of humidity, acid, alkali and any other aggressive chemicals like cleaning agents when installing and also when using profiles.
- Recommended manufacturer's adhesives should be strictly observed.
- All adhesives and chemicals used should be compatible with Vetrite Tile.
- The selection and application of adhesives and chemicals, along with the choice of the substrate and preparation for installing Vetrite Tile, is solely at the discretion and risk of the installer.
- Sisis is available for any assistance and suggestions.*

149

PULIZIA E MANUTENZIONE

Un'accurata e regolare operazione di pulizia non solo preserva le qualità estetiche delle superfici, ma ne mantiene anche inalterate le caratteristiche, asportando polvere e depositi aggressivi. Le operazioni di pulizia devono essere eseguite manualmente o con idonea attrezzatura dall'alto verso il basso. Vetrite Tile Collection è realizzata con diversi materiali con differenti caratteristiche e resistenze. Si raccomanda in ogni caso di fare preventivamente un test di pulizia su una porzione limitata della superficie da trattare per verificare la compatibilità del detergente. Non spruzzare il detergente direttamente sulla superficie del materiale, ma sul panno morbido e pulito. Non utilizzare detergenti abrasivi e aggressivi.

CLEANING AND MAINTENANCE

A thorough and regular cleaning not only guarantees the exterior finish of the surface but also preserves its quality by removing dust and aggressive deposits. Cleaning operations must be done manually or by using suitable cleaning equipment from top to bottom. Vetrite Tile Collection is made by several materials with different properties and resistances. We recommend you to first try the cleaning product on a small portion of surface so to make sure that it will not be affected. Do not spray the cleaning product directly to the surface but on a soft cleaning cloth. Do not use abrasive or aggressive agents.

* SisisGrip è un trattamento in fase produttiva volta a creare una superficie antiscivolo conforme con lo standard ANSI A137.1 per DCoF
* SisisGrip is a treatment during production that creates a slip resistance surface and complies with the ANSI A137.1 standard for DCoF



AVVISO LEGALE

Ricevendo il presente catalogo SICIS, prendi atto ed accetti i seguenti termini e condizioni:

Il presente catalogo è e rimane di proprietà di SICIS S.r.l. ("SICIS").

SICIS si riserva il diritto, in qualsiasi momento, di richiederne la restituzione.

Il catalogo è fornito a TITOLO GRATUITO e NON ne è AUTORIZZATA LA RIVENDITA. Se hai dovuto pagare per questo catalogo, ti preghiamo di segnalarcelo scrivendoci all'indirizzo riportato di seguito.

Le leggi in materia di diritto d'autore (Copyright) proteggono il contenuto del presente catalogo, inclusi, senza alcuna limitazione, le fotografie, immagini, testi, layout ed i disegni in esso contenuti.

La riproduzione o la copia di qualsiasi parte del presente catalogo, inclusi, senza alcuna limitazione, le fotografie, immagini, testi, layout ed i disegni in esso contenuti, È VIETATA, e SICIS si riserva il diritto di intraprendere azione legale nei confronti di chiunque (incluso te) violi il presente divieto.

L'aver ricevuto una copia del presente catalogo, non dà diritto in alcun modo ad alcuna licenza da parte di SICIS, né implicita né tantomeno espressa, di riprodurre o copiare, in qualsiasi modo o forma, alcuna parte di esso.

Il marchio SICIS® è un marchio registrato e di proprietà della SICIS S.r.l., ed è protetto dalle leggi nazionali ed internazionali in materia.

SICIS espressamente si riserva tutti i diritti e rimedi.

LEGAL NOTICE

By retaining this SICIS catalogue, you acknowledge and agree to the following:

This catalogue is and remains the property of SICIS S.r.l. ("SICIS").

SICIS reserves the right, at any time, to request the return of this catalogue.

The catalogue is provided to you FREE OF CHARGE and is NOT FOR RESALE. If you paid for this catalogue, please write to SICIS at the address provided below.

Copyright laws protect the content of this catalogue, including, without limitation, the photographs, images, text, layout and designs contained therein.

The reproduction or copying of any part of this catalogue, including, without limitation, the photographs, images, text, layout and designs contained therein, IS PROHIBITED, and legal action may be commenced against anyone, including, but not limited to, yourself, who violates this prohibition.

By giving you a copy of this catalogue, SICIS is not thereby giving you any license, either implied or express, to reproduce or copy it or any parts of it, in any way.

The trademark SICIS® is a registered trademark and the property of SICIS S.r.l., and is protected under domestic and international laws.

SICIS reserves all its rights and remedies.

info@sicis.com · Sicis s.r.l. Via Canala, 85 · 48123 Ravenna (Italy)

© 2017, Sicis s.r.l. Ravenna (Italy) · Printed in Italy · September 2017

SICIS

Showroom Milano 20121 · Via Fatebenefratelli, 8

Ph. +39 02 87 60 99 · Fax +39 02 72 09 68 53

Factory Ravenna (Italy) · Fax +39 0544 46 98 11

SICIS FRANCE

Showroom Paris 75008 · 41, Rue François 1er

Ph. +33 (0)1 49 52 89 89 · Fax +33 (0)1 49 52 89 90

SICIS UNITED KINGDOM

Showroom London · 15A Dover St, Mayfair, W1S 4LR

15A Dover St., Mayfair, W1S 4LR London

Ph. +44 (0) 207 491 9849

SICIS TURKEY

Sicis Istanbul-European Showroom

Maçka Cad. No:1 Nişantaşı

Ph. +90 212 240 25 96 · Fax +90 212 240 25 64

SICIS HONG KONG

Showroom Hong Kong · Queen's Cube

235/237 Queen's Road East, Wan Chai

Ph. +(852) 2832 2830 · Fax +(852) 2833 9009

SICIS NORTH AMERICA

Corporate Headquarters New York

150 Bruckner Blvd Bronx NY 10454

Ph. +1 212 965 4100 · Fax +1 646 390 4587

SICIS®

WWW.SICIS.COM info@sicis.com